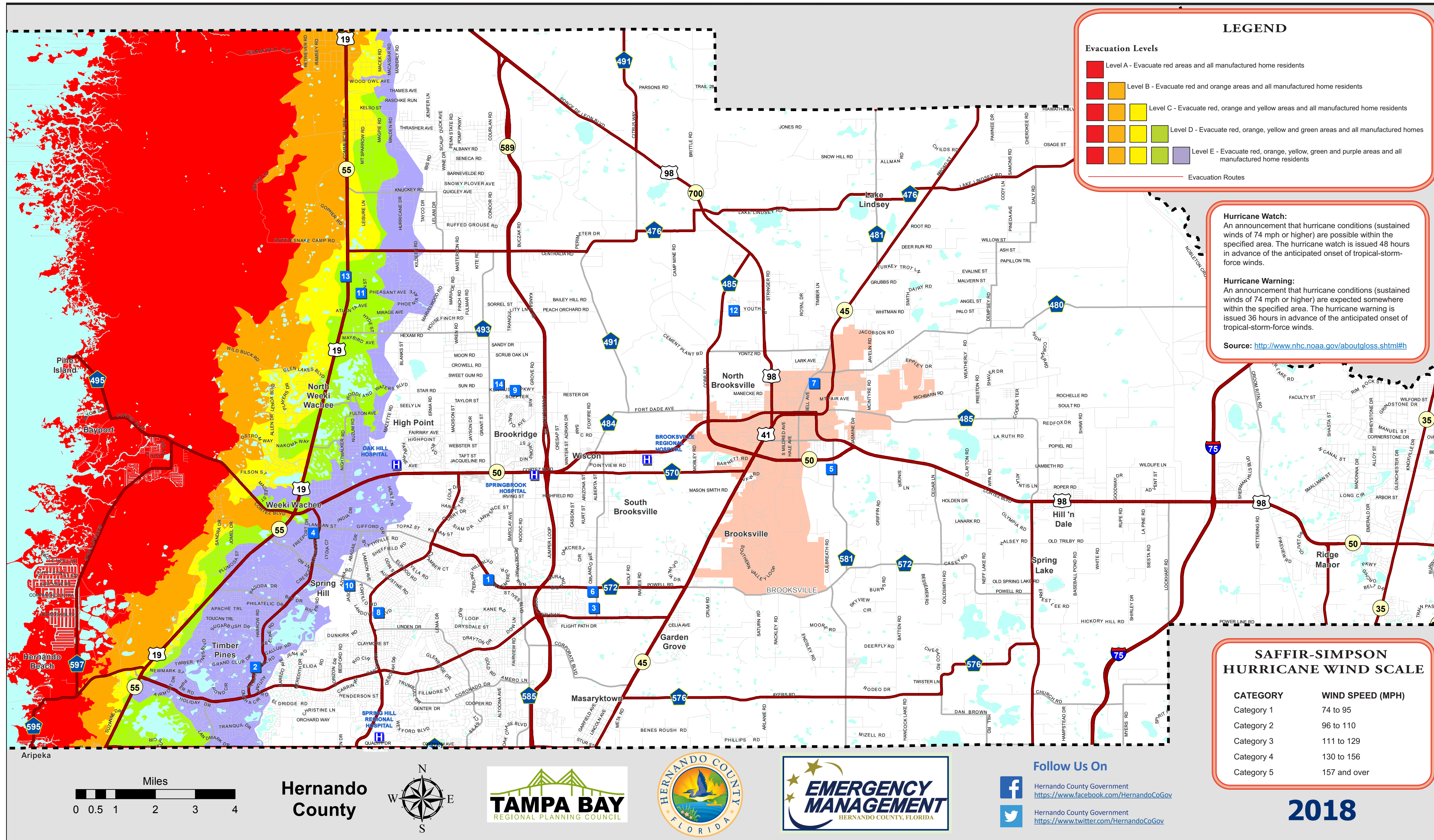


# HERNANDO COUNTY

## EVACUATION ZONES & SHELTERS

## SHELTER INFORMATION - Refer to Map



NO.	SHELTER NAME	ADDRESS
1	Challenger K-8 School	13400 Elgin Blvd., Spring Hill, 34609
2	Deltona Elementary	2055 Deltona Blvd., Spring Hill, 34606
3	Nature Coast Technical High School	4057 California St., Brooksville, 34604
4	Fox Chapel Middle School	9412 Fox Chapel Lane, Spring Hill, 34606
5	Moton Elementary	7175 Emerson Road, Brooksville, 34601
6	Chocachatti Elementary	4135 California St., Brooksville, 34604
7	Hernando High School	700 Bell Ave., Brooksville, 34601
8	Springstead High School	3300 Mariner Blvd., Spring Hill, 34609
9	West Hernando Middle School	14325 Ken Austin Parkway, Brooksville, 34613
10	Explorer K-8 School	10252 Northcliffe Blvd., Spring Hill, 34608
11	Weeki Wachee High School	12150 Vespa Way, Weeki Wachee, 34614
12	D.S. Parrott Middle School	19220 Youth Drive, Brooksville, 34601
13	Winding Waters K-8	12240 Vespa Way, Weeki Wachee, 34614
14	Central High School	14075 Ken Austin Parkway, Brooksville, 34613

Special Needs Shelter Only  
Pet Friendly Shelter

[www.hernandocounty.us/em](http://www.hernandocounty.us/em)  
Scan this code with your smart phone's barcode reader.

Shelters do not open in a certain order. Residents with questions about which shelters are open should contact the Public Information Center. The Special Needs Shelter at Challenger K-8 School requires preregistration and only accepts special needs clients and their caregiver. Any others will need to go to a general population shelter.

## IMPORTANT CONTACT INFORMATION

ANIMAL SERVICES	352-796-5062
EMERGENCY MANAGEMENT	352-754-4083
EOC RECORDED INFORMATION LINE	352-754-4111
FLORIDA HIGHWAY PATROL	352-754-6767
DUKE ENERGY	800-228-8485
PUBLIC INFORMATION CENTER	352-754-4083
HERNANDO COUNTY SHERIFF	352-754-6830
HERNANDO COUNTY FIRE RESCUE	352-540-4353
BROOKVILLE FIRE DEPARTMENT	352-540-3840
SOLID WASTE	352-754-4037
WITHLACOCHEE RIVER ELECTRIC COOPERATIVE	352-596-4000
AMERICAN RED CROSS	352-564-8455
CATHOLIC CHARITIES	352-686-9897
SALVATION ARMY	352-796-1186
UNITED WAY	352-688-2026
TAMPA BAY CARES, INC	2-1-1
S.A.M.E. CODE (SPECIFIC AREA MESSAGE ENCODER)	FIPS CODE 012053
WWW.HERNANDOCOUNTY.US/EM	
EMERGENCY DIAL 9-1-1	

\* For Current Emergency Information and Live EOC Updates tune to Hernando County Government Broadcast Cable Channel 644 or web streamed at [www.hernandocounty.us](http://www.hernandocounty.us).

### USING YOUR COUNTY MAP

- Locate where you live and work on the map.
- Determine whether you are in an evacuation area, and if so, what level (color).
- If you are in an evacuation area, or live in a mobile home/RV, decide where you will go if ordered to evacuate. Your choices include:
  - Home of a relative or friend outside the evacuation zone
  - Hotel/motel outside the evacuation zone (make arrangements early)
  - Go to a public shelter
  - As a last resort leave the area entirely
- If you must go to a public shelter, use your county map to decide which one is convenient. Make sure you verify the shelter is open before you go.

**ALERT HERNANDO**

**Hernando County's Emergency Alert Program**

Receive *automated* emergency weather alerts and other important messages from Hernando County.

Register today at:  
[www.AlertHernando.org](http://www.AlertHernando.org)

If you are unable to register online, please call  
Hernando County Emergency Management  
at **352-754-4083**

### HURRICANE THREAT

- The colored areas on the map are vulnerable to storm surge. Storm surge is produced by water being pushed towards the shore by the force of the winds moving around the storm.
- Storm surge creates a path of destruction, wiping out structures as it rapidly surges inland and then recedes. This is a life threatening situation for anyone who ignores mandatory evacuation orders and stays in vulnerable areas.
- Hurricanes are categorized on a scale of 1 to 5, depending on wind strength and destructive power. The evacuation zones are color coded to designate the level of storm surge likely to occur.
- If you live in an area ordered to evacuate, gather your family/pets and emergency supplies, secure your home and leave immediately. Failure to obey a mandatory evacuation order is a violation of state and local laws.

NOTE: All persons living in mobile homes/RVs must evacuate for all mandatory evacuation orders, regardless of where you are located in the county.