

**Hernando County Comprehensive Plan  
DRAFT 2040 PLAN**

**Section B.**

**FUTURE LAND USE MAP SERIES**

**POSTED ON JUNE 30, 2017**

## **Table of Contents**

**Future Land Use Map**

**Future Land Use Mapping Criteria**

**Future Land Use Amendment History Table**

**Adjusted Urbanized Area Map**

**Quarry Preserve Master Plan Map**

**2040 Roadway Plan Map**

**Coastal High Hazard Area Map**

**DRAFT**

---

Amended and Re-adopted (date), Effective date (date)

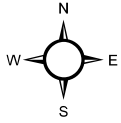
FLU Map Series Amendments: x-xx-xx (CPAMxx-xx);

F:\WPDATA\Pmcneese\EAR Amendments\COMP PLAN 2017 ST-U DRAFT\FLU Map Series\FLU Map Series

TOC 06.30.17.Docx

DRAFT

# Hernando County Comprehensive Plan FUTURE LAND USE MAP

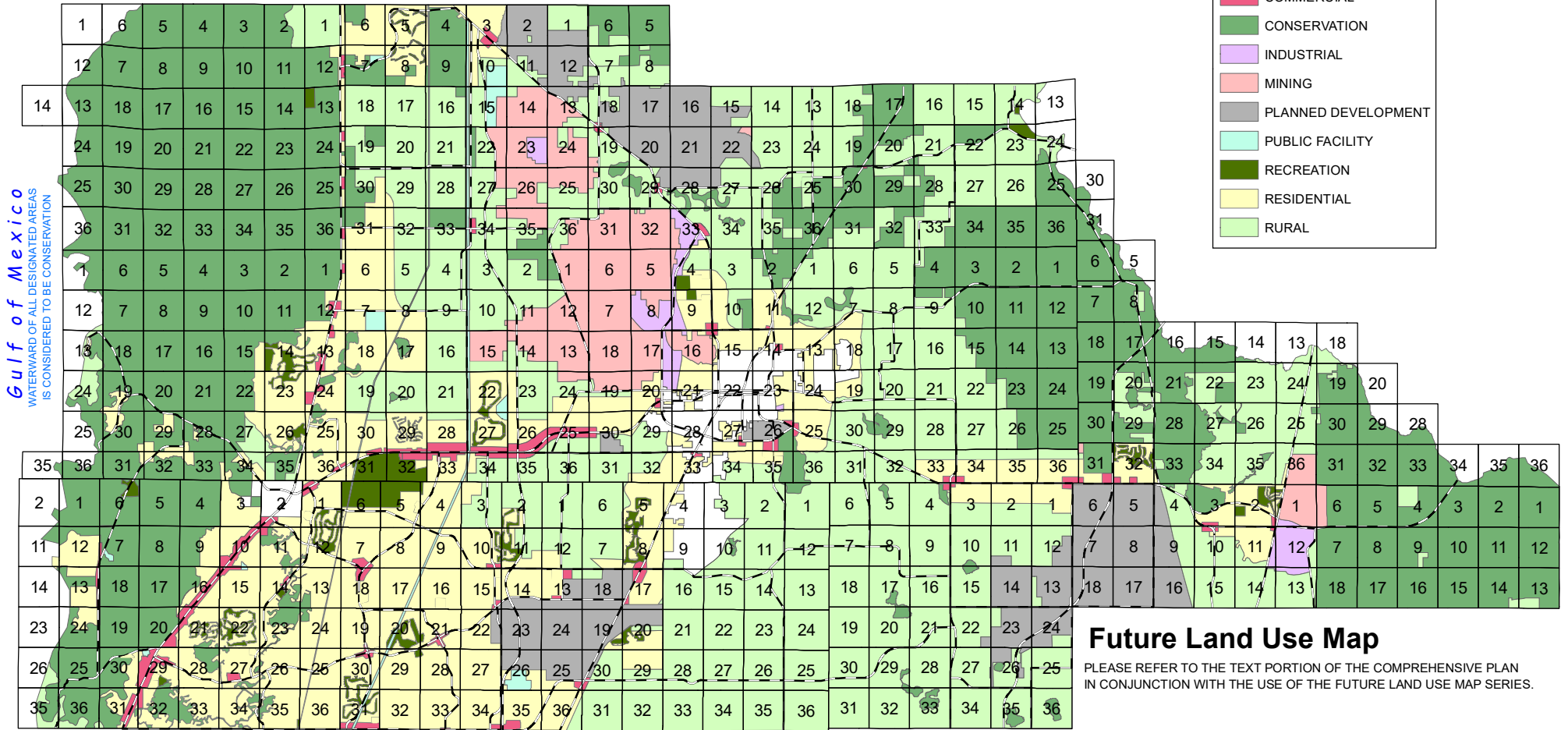


Effective Date: (date)  
HC Ordinance: # 2018-xx

**Legend**

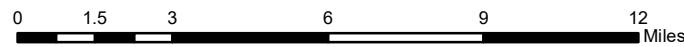
**Future Land Use**

- CITY
- COMMERCIAL
- CONSERVATION
- INDUSTRIAL
- MINING
- PLANNED DEVELOPMENT
- PUBLIC FACILITY
- RECREATION
- RESIDENTIAL
- RURAL



## Future Land Use Map

PLEASE REFER TO THE TEXT PORTION OF THE COMPREHENSIVE PLAN  
IN CONJUNCTION WITH THE USE OF THE FUTURE LAND USE MAP SERIES.



Source: S:\Share\Planning\CompPlan2015\Finished Projects\FLU\_Map\_Draft.pdf  
Project: S:\Share\Planning\CompPlan2015\Finished Projects\FLU\_Map\_Draft.mxd  
Date of mapping: 08/31/2017

## Residential Category

**Mapping Criteria:** The Residential Category is designed to accommodate a variety of residential and support uses at varying densities and types located in areas primarily clustered in and around the Adjusted Urbanized Area and those areas that maximize the efficient use of existing and planned infrastructure.

## Rural Category

**Mapping Criteria:** The Rural Category includes:

- (1) areas outside the anticipated residential growth patterns and planned urban service facilities;
- (2) areas in some level of agricultural use and/or with large tracts of land that are rural in nature;
- (3) Properties with physical limitations (floodplains, sinkholes, wetlands, etc.) and properties transitional to major conservation areas;
- (4) Areas that exhibit a development pattern that is rural residential in nature that may include limited agricultural activities.

## Conservation Category

**Mapping Criteria:** The Conservation Category includes public and private natural areas designated for conservation due to sensitive or unique geologic, hydrologic or environmental characteristics; or held by federal, state or local government agencies for conservation purposes.

### Map Interpretation Guidance:

- (1) Due to general application of a 20-acre mapping threshold for the Future Land Use Map, small or isolated natural features such as wetlands may not be shown on the Future Land Use Map;
- (2) Wetlands and privately-owned uplands in the Coastal Zone that are completely surrounded by Conservation Category lands and do not have direct access to the County roadway network are included in the Conservation Category;
- (3) Privately-owned uplands within the Coastal Zone having direct access to the County roadway network may be considered to have a Residential Future Land Use Category designation for purposes of allowable uses only, subject to the densities assigned in the Coastal Management Element of this Plan;
- (4) Class I wetlands of forty acres or more shall be included in the Conservation Category pursuant to the Conservation Element of this Plan;
- (5) The boundaries of the Conservation FLUM Category containing wetlands are interpreted to correspond with the wetland boundary as determined by the applicable agencies;
- (6) Privately-owned lands that are not designated for conservation purposes outside the Coastal Zone shall be considered to have a Rural Future Land Use Category designation.

### Commercial Category

**Mapping Criteria:** The Commercial Category includes commercial corridors along U.S. 19 and S.R. 50 and designated commercial nodes at intersections of arterial and/or collector roads intended primarily for commercial development with a wide variety of uses.

**Map Interpretation Guidance:** Areas considered to have a Commercial Category designation but not shown on the Future Land Use Map include neighborhood commercial and specialty commercial uses as described in this Plan, commercial approved as part of mixed use developments, commercial designated by planned development districts, the infill development of existing commercial areas, commercial areas extending from designated commercial nodes, and pre-existing commercially developed and designated areas.

### Industrial Category

**Mapping Criteria:** The Industrial Category includes existing industrial zoned properties and areas proposed for industrial use due to their proximity to appropriate infrastructure, especially transportation, and their relatively low impact to existing surrounding land uses.

### Mining Category

**Mapping Criteria:** The Mining Category includes the area north of S.R. 50 within the outer boundaries of mining zoned properties existing as of June 7, 1989, and lands which receive comprehensive plan amendment approval to the Mining Category after June 7, 1989.

### Recreation Category

**Mapping Criteria:** The Recreation Category includes areas, public or private, which are designated for active and passive community (not neighborhood) recreation purposes including locations containing natural features and those that are convenient to residents.

### Public Facility Category

**Mapping Criteria:** The Public Facility Category includes areas of major facilities that serve a large portion of the County, the entire County, or that include service areas beyond the County such as, but not limited to, landfills, power plants, major or new power easements, and regional potable water and wastewater treatment facilities.

### Planned Development District Category

**Mapping Criteria:** The Planned Development District includes properties specified in the following individual approved Planned Development Districts (PDDs) with an area specific set of criteria and strategies for development:

- (1) I-75/SR 50 PDD;
- (2) Airport PDD;
- (3) World Woods PDD
- (4) Hickory Hill PDD;
- (5) Brooksville Regional Medical Center PDD;
- (6) Quarry Preserve PDD;
- (7) South Brooksville PDD.

DRAFT

## Future Land Use Map Summary

This table is a summary of strategies contained in the Future Land Use Element and is intended for guidance purposes only.

Future Land Use Category	Maximum Density per Gross Acre	Notes
<b>RESIDENTIAL - Objective 1.04B</b>		
Residential uses including single family, duplex, resort, and multi-family; recreational; institutional; certain commercial uses subject to criteria.		
	22 Dwelling Units (DU)	
<u>Single-Family Housing:</u>		Average overall density of 2.5 - 5.4 DU/Gross Acre
<u>Multi-Family Housing:</u>		Average overall density of 7.5 - 22 DU/Gross Acre
<u>Mobile Home Park:</u>		Average overall density of 2.5 - 5.4 DU/Gross Acre
<b>RURAL - Objective 1.04C</b>		
Agriculture; agricultural commercial; agri-industrial; recreation; agritourism; residential land uses of a rural character; certain commercial uses subject to criteria.		
	0.1 Dwelling Units	Density exception for parcels of 40 acres or less in single ownership as of January 1,1990 - See Strategy 1.04C(1)
<u>Rural Infill Areas:</u>	2 Dwelling Units	Minimum parcel size of 21,500 square feet
<u>1,320-Foot Transition Zone:</u>	Appropriate for a logical transition from Residential Category to Rural Category	
<u>Historic Rural Communities:</u>	2 Dwelling Units	Applies to communities described in Strategy 1.04C(7); Existing lots of record may develop regardless of size
<u>Countryside Community:</u>	0.425 Dwelling Units	

Amended and Re-adopted (date), Effective date (date)

FLU Mapping Criteria Amendments: x-xx-xx (CPAMxx-xx);

F:\WPDATA\Pmcneese\EAR Amendments\COMP PLAN 2017 ST-U DRAFT\FLU Map Series\FLU Mapping Criteria 06.30.17 With Table.Docx

<b>Future Land Use Category</b>	<b>Maximum Density per Gross Acre</b>	<b>Notes</b>
<b>CONSERVATION - Objective 1.04F</b>		
Timbering; limited resource-oriented recreational activities; security residences		
	0.05 Dwelling Units	Private uplands in Coastal Zone with access to County roadway network may be assigned appropriate Residential Category uses and densities appropriate for Coastal Zone
<b>COASTAL ZONE - Strategy 11.02A(3)</b>		
Infill residential in existing communities with existing infrastructure; newly proposed residential development must meet density requirements; Private uplands in Conservation Category with access to County roadway network may be assigned appropriate Residential Category uses and densities appropriate for Coastal Zone		
<u>Coastal High Hazard Area:</u>	1 Dwelling Unit	
<u>V-Zone:</u>	1 Dwelling Unit per Gross Upland Acre	
<b>Future Land Use Category</b>	<b>Overall Average Gross Floor Area Ratio</b>	<b>Notes</b>
<b>COMMERCIAL - Objective 1.04G</b>		
Retail, office, commercial service uses, limited industrial, recreational, institutional; residential and mixed uses allowable with criteria		
	0.35	
<u>Commercial Nodes:</u>		Maximum area generally 60 acres (outside Adjusted Urbanized Area) to 100 acres (in Adjusted Urbanized Area)
<u>Strip Development:</u>		Located on U.S. Highway 19 and on the SR-50
<u>Neighborhood Commercial:</u>		Maximum area of 5 acres
<u>Specialty Commercial:</u>		Allowed in any Land Use Category subject to locational strategies
Agricultural Commercial		Maximum area of 5 acres
Marine Commercial		
Heavy Commercial		

Amended and Re-adopted (date), Effective date (date)

FLU Mapping Criteria Amendments: x-xx-xx (CPAMxx-xx);

F:\WPDATA\Pmcneese\EAR Amendments\COMP PLAN 2017 ST-U DRAFT\FLU Map Series\FLU Mapping Criteria 06.30.17 With Table.Docx



Future Land Use Category	Overall Average Gross Floor Area Ratio	Notes
<b>INDUSTRIAL - Objective 1.04H</b>		
Industrial uses		
	0.5	
<b>MINING - Objective 1.04I</b>		
Mining and ancillary mining activities; Co-location of mining support-related or product-consuming industrial uses; agricultural uses allowable		
	0.5	
<b>RECREATION - Objective 1.04J</b>		
Major recreational facilities; private or public parks; recreational lodgings; ancillary commercial uses; security housing		
<b>PUBLIC FACILITIES - Objective 1.04K</b>		
Major facilities serving a large portions, or entire County (e.g., landfills, power plants, regional utilities)		
<b>PLANNED DEVELOPMENT DISTRICT - Objectives 1.05A through 1.05G</b>		
Each Planned Development is regulated by the specific adopted objectives and strategies associated with each District.		

Amended and Re-adopted (date), Effective date (date)

FLU Mapping Criteria Amendments: x-xx-xx (CPAMxx-xx);

F:\WPDATA\Pmcneese\EAR Amendments\COMP PLAN 2017 ST-U DRAFT\FLU Map Series\FLU Mapping Criteria 06.30.17 With Table.Docx

**Hernando County Comprehensive Plan  
Section B Future Land Use Map Series  
Future Land Use Map Amendment History**

Future Land Use Map Amendment History:

CPAM-XX-XX, (XX-XX-XX, Ordinance 20XX-XX) [Element; Name]

CPAM-XX-XX, (XX-XX-XX, Ordinance 20XX-XX) [Element; Name]

CPAM-XX-XX, (XX-XX-XX, Ordinance 20XX-XX) [Element; Name]

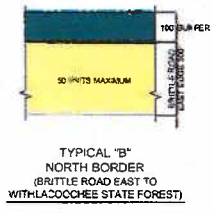
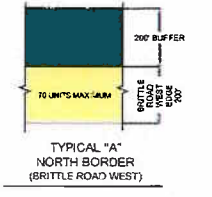
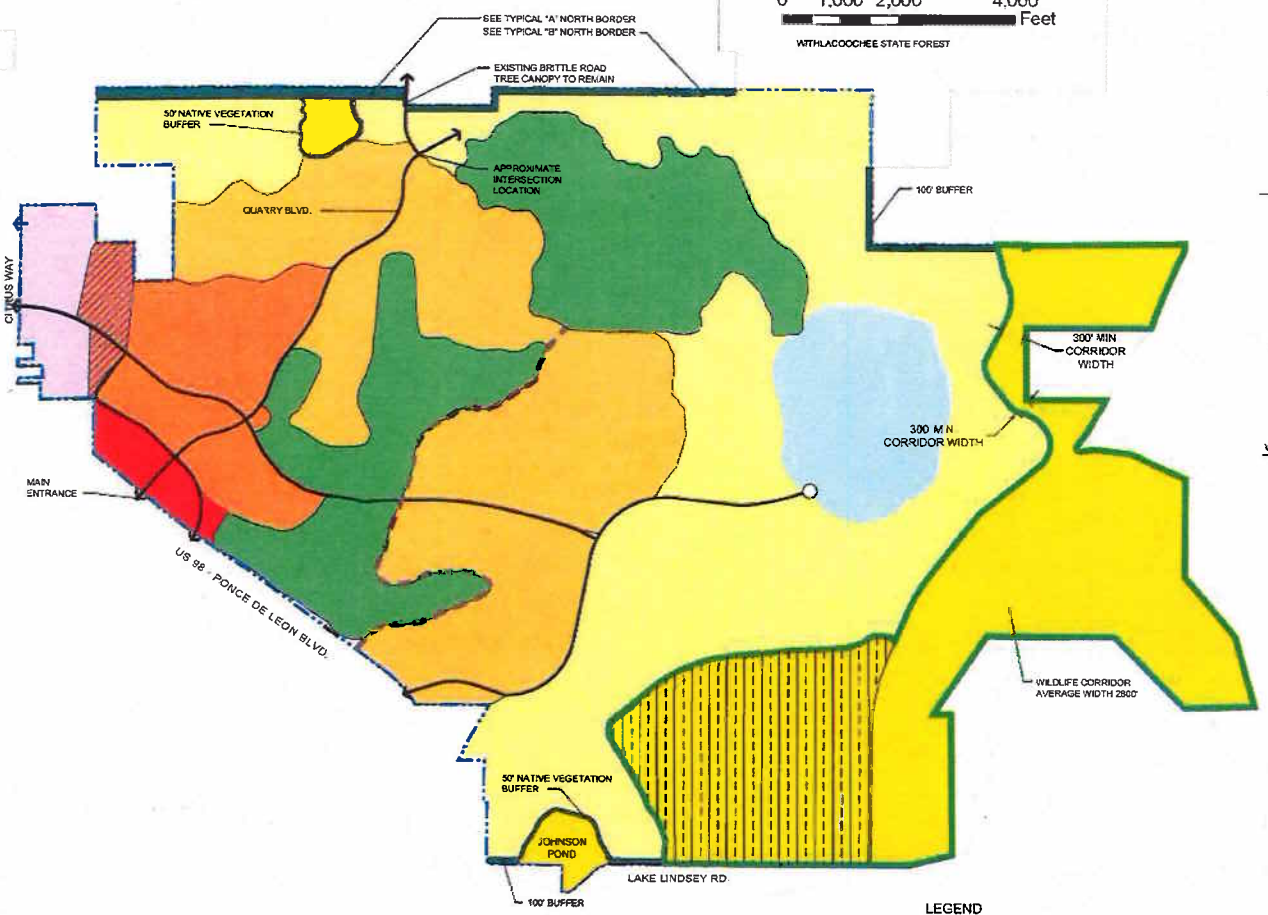
DRAFT



January 6, 2011



QUARRY PRESERVE PDD  
MASTER PLAN



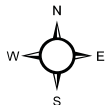
**LEGEND**

COMMUNITY RESIDENTIAL	GATES ALLOWED IN COMMUNITY RESIDENTIAL EAST OF LINE	COMMUNITY ROADWAY NETWORK
RESORT DEVELOPMENT AREA	WILDLIFE CORRIDOR	PRESERVATION AREAS
NEIGHBORHOOD RESIDENTIAL	QUARRY NATURE PRESERVE	BUFFER
BUSINESS PARK	BUSINESS PARK EXPANSION AREA (IF NEEDED)	GOLF COURSE
TOWN CENTER	HIGHWAY COMMERCIAL	

**NOTE:**  
1. THE MASTER PLAN ADOPTED FOR THE QUARRY PRESERVE PDD PROVIDES THE GENERALIZED BOUNDARIES OF LAND USES AND SIGNIFICANT FEATURES OF THE DEVELOPMENT, INCLUDING THE WILDLIFE CORRIDOR AND EXTERNAL ACCESS POINTS. ANY ADJUSTMENTS TO THE BOUNDARIES SHALL BE GEOGRAPHICALLY LIMITED AND THE BOUNDARIES OF THE LAND USES AND SIGNIFICANT FEATURES MAY VARY, BUT ONLY TO THE EXTENT NECESSITATED BY ENVIRONMENTAL PERMITTING REQUIREMENTS, REQUIRED PLACEMENT OF INFRASTRUCTURE AND PHYSICAL CONSTRAINTS, INCLUDING SOIL SUITABILITY AND TOPOGRAPHY. A COMPREHENSIVE PLAN AMENDMENT SHALL NOT BE REQUIRED FOR ADJUSTMENTS TO LAND USES AND SIGNIFICANT FEATURES UNLESS THE PROPOSED CHANGE IS INCONSISTENT WITH THE DENSITY OR INTENSITY STANDARDS AND DEVELOPMENT CONTROLS OF THE QUARRY PRESERVE PDD AS SET FORTH IN OBJECTIVE 1.07G AND ASSOCIATED POLICIES.

Planning Services, Inc. 1400 Westgate Drive, Suite 100, Westgate, FL 33514  
 Project No. 10111-1101

DRAFT



# Hernando County Comprehensive Plan 2040 ROADWAY PLAN MAP

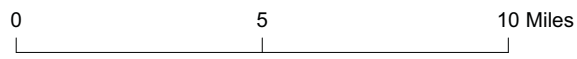
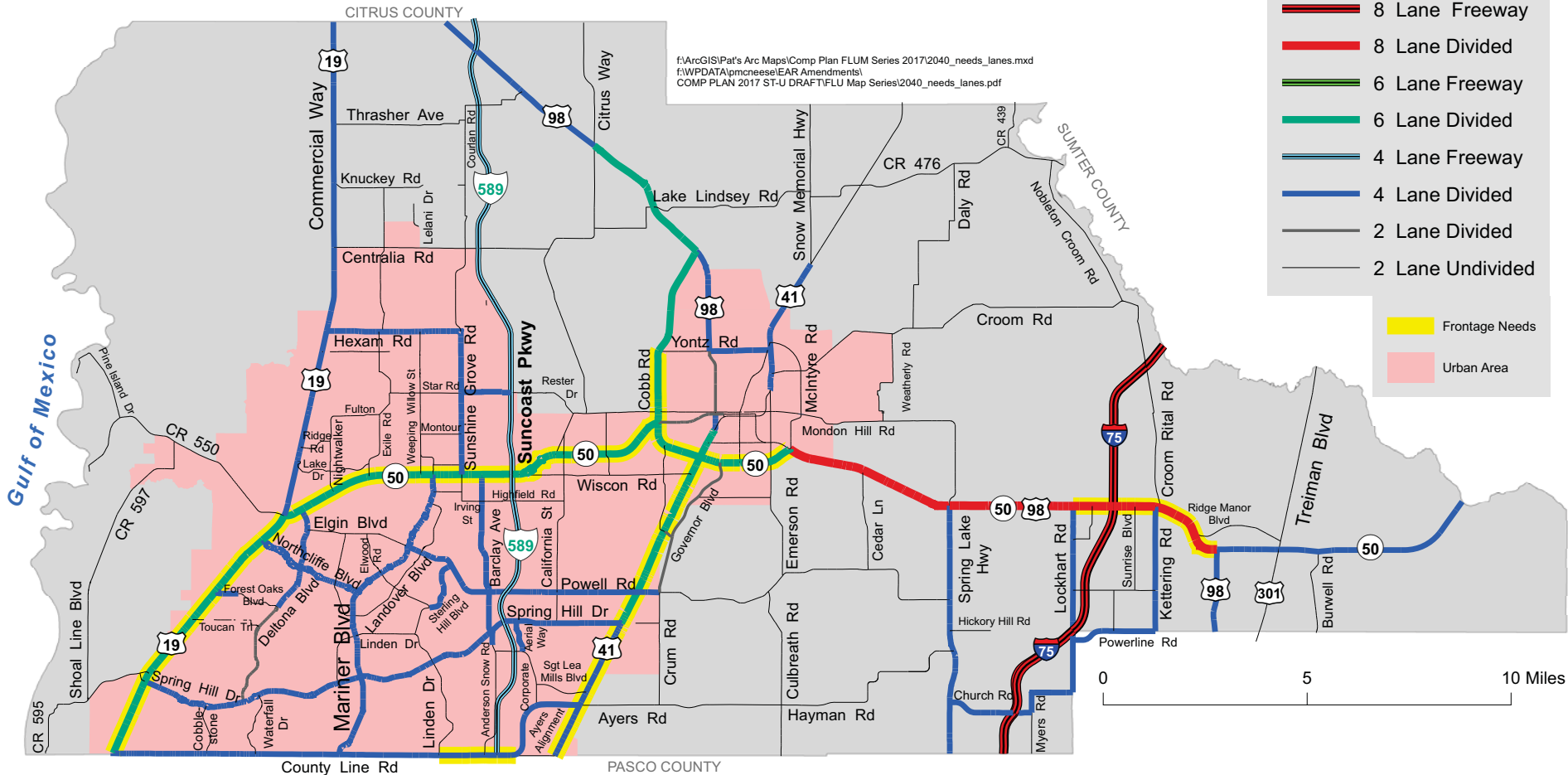
f:\ArcGIS\Pat's Arc Maps\Comp Plan FLUM Series 2017\2040\_needs\_lanes.mxd  
f:\WPDATA\pmcneese\EAR Amendments\COMP PLAN 2017 ST-U DRAFT\FLU Map Series\2040\_needs\_lanes.pdf

### LEGEND

**2040 Roadways**

- 8 Lane Freeway
- 8 Lane Divided
- 6 Lane Freeway
- 6 Lane Divided
- 4 Lane Freeway
- 4 Lane Divided
- 2 Lane Divided
- 2 Lane Undivided

- Frontage Needs
- Urban Area

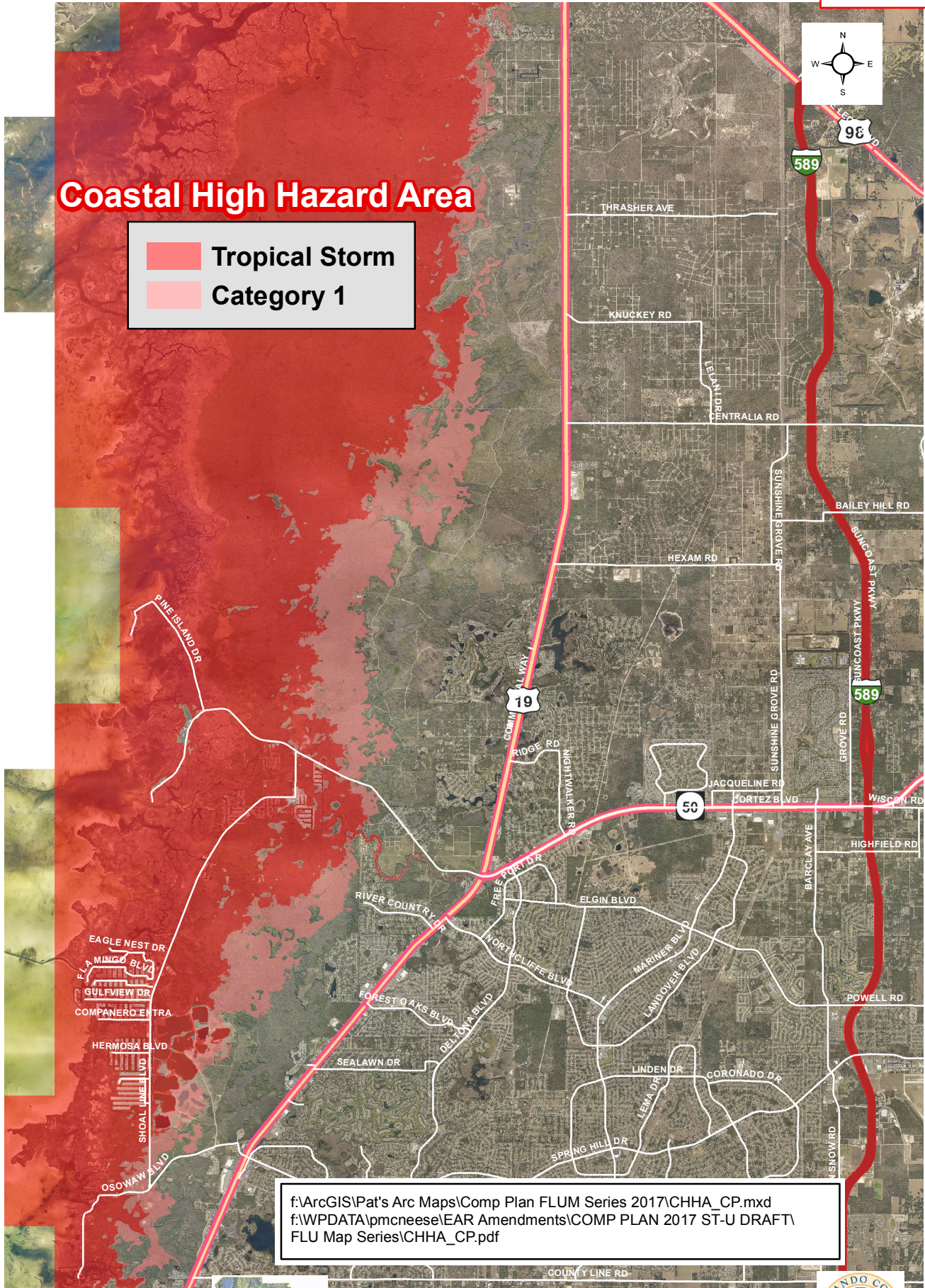


# Hernando County Comprehensive Plan COASTAL HIGH HAZARD AREA

DRAFT

## Coastal High Hazard Area

- Tropical Storm
- Category 1



f:\ArcGIS\Pat's Arc Maps\Comp Plan FLUM Series 2017\CHHA\_CP.mxd  
f:\WPDATA\pmcneese\EAR Amendments\COMP PLAN 2017 ST-U DRAFT\FLU Map Series\CHHA\_CP.pdf

