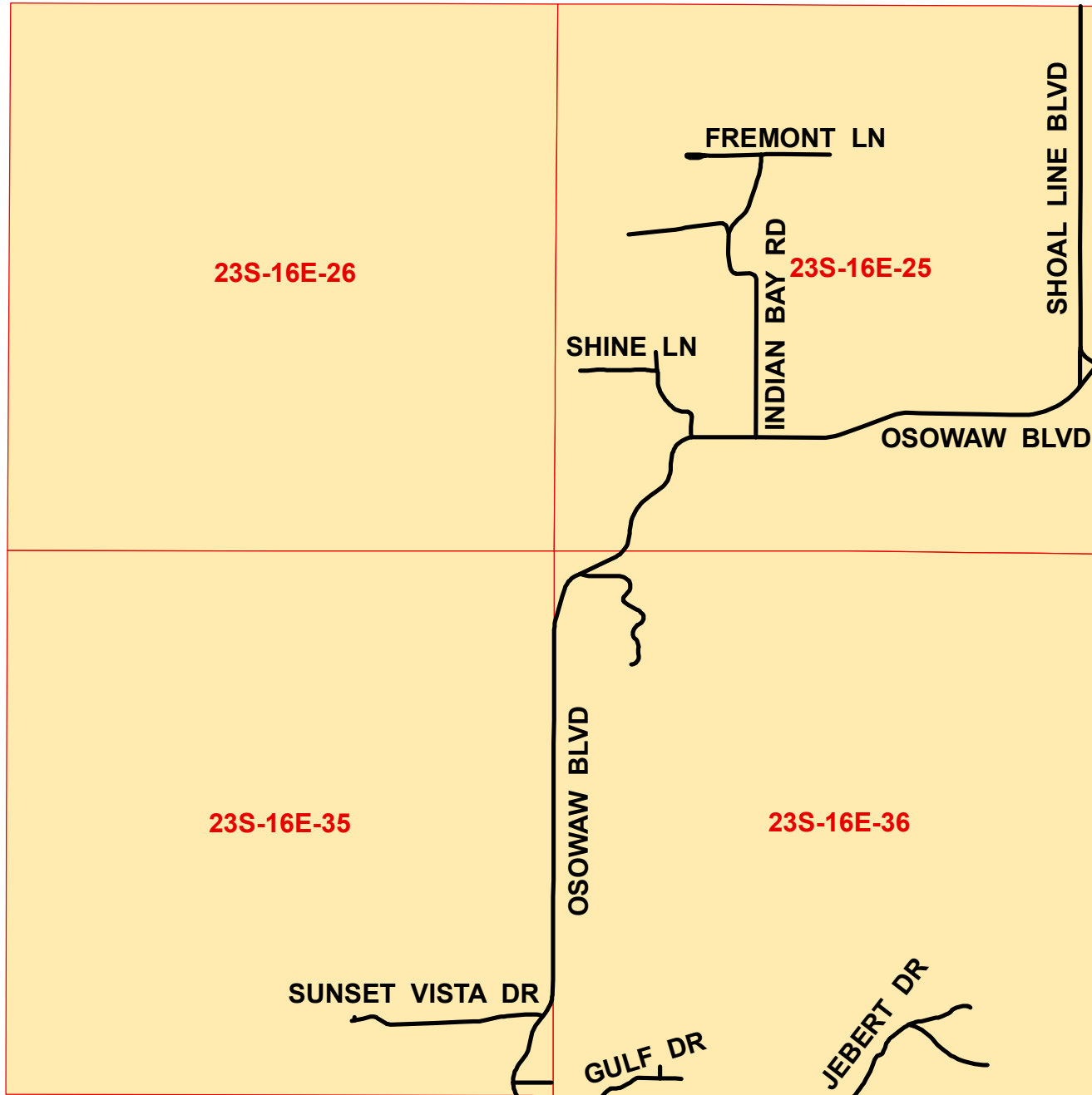


Historic Rural Communities: Aripeka, Florida



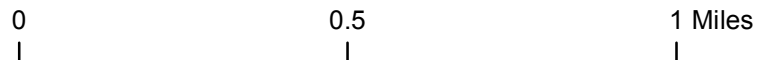
Aripeka



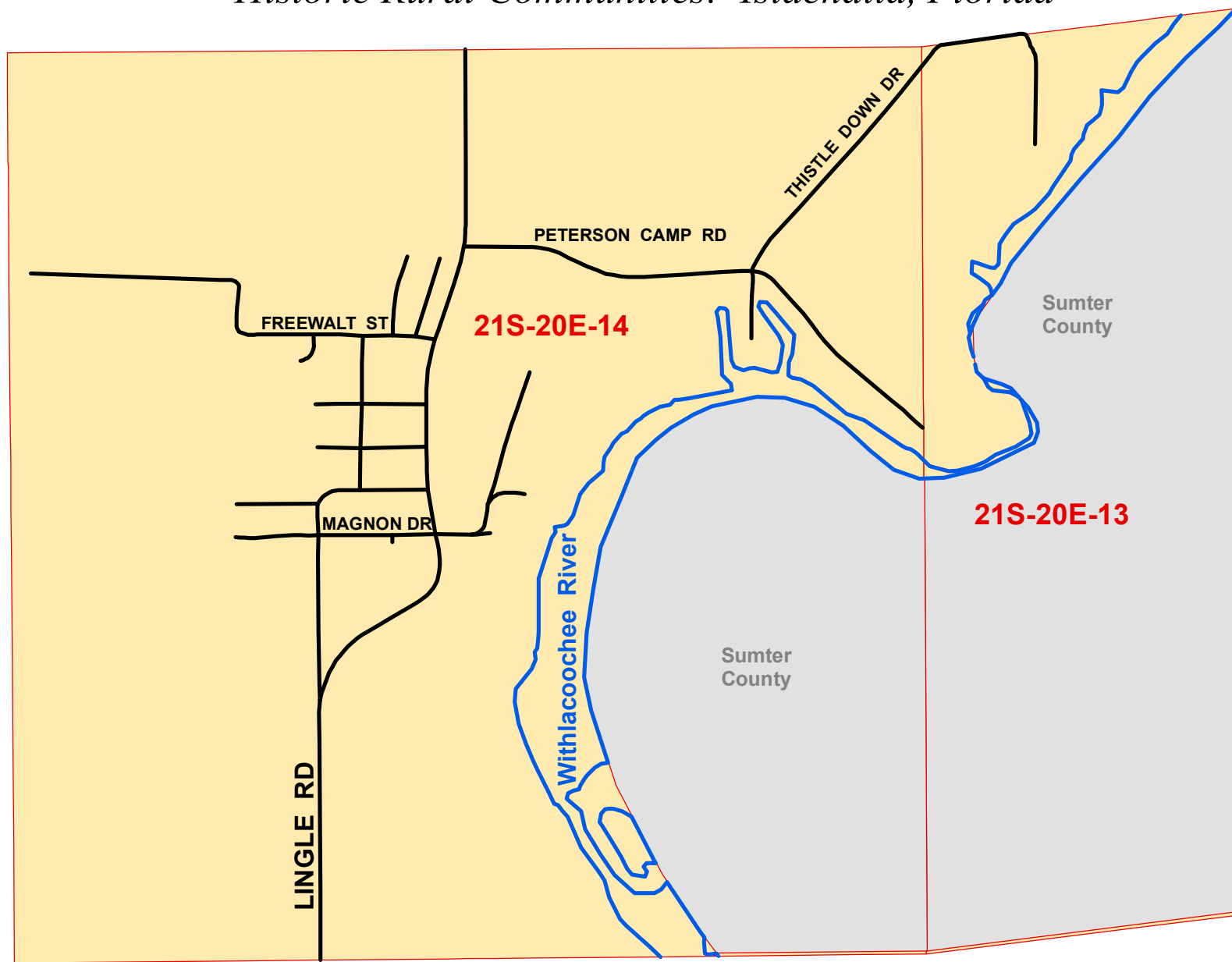
Public Land Survey (PLS)
Township - Range - Section
Example: Township 23 South,
Range 16 East, Section 36



6/22/2016
1:18,500



Historic Rural Communities: Istachatta, Florida

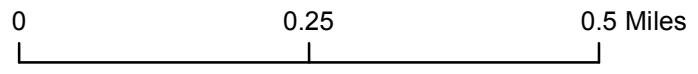


 Istachatta

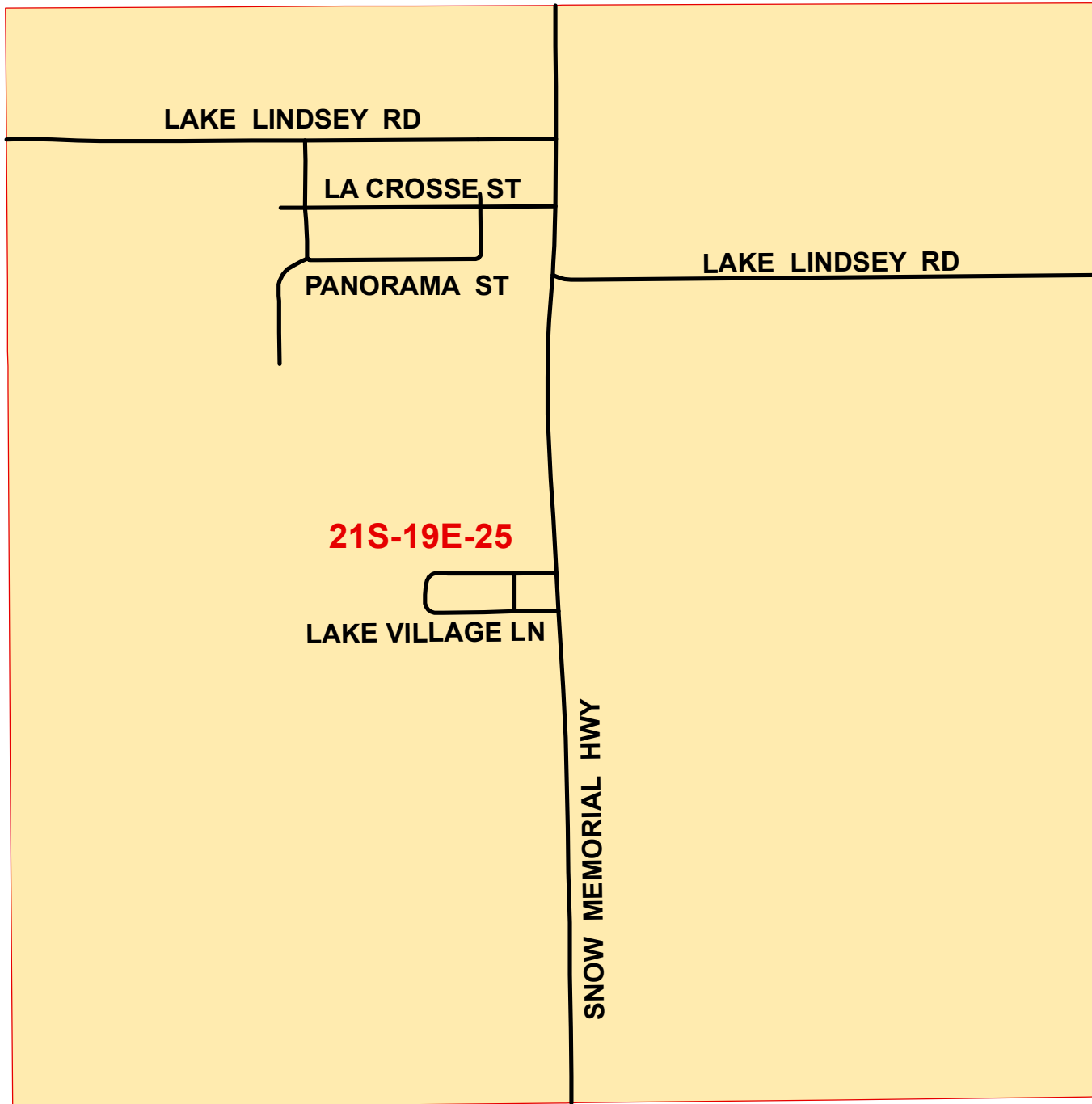



6/23/2016
1:10,500

Public Land Survey (PLS)
Township - Range - Section
Example: Township 21 South,
Range 20 East, Section 14
(Hernando County
portion ONLY)



Historic Rural Communities: Lake Lindsey, Florida



 Lake Lindsey




Public Land Survey (PLS)
Township - Range - Section
Example: Township 21 South,
Range 19 East, Section 25



6/22/2016
1:9,769

Historic Rural Communities: Nobleton, Florida



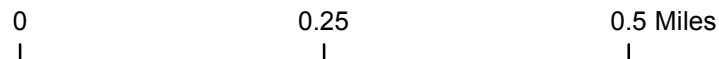
 Nobleton



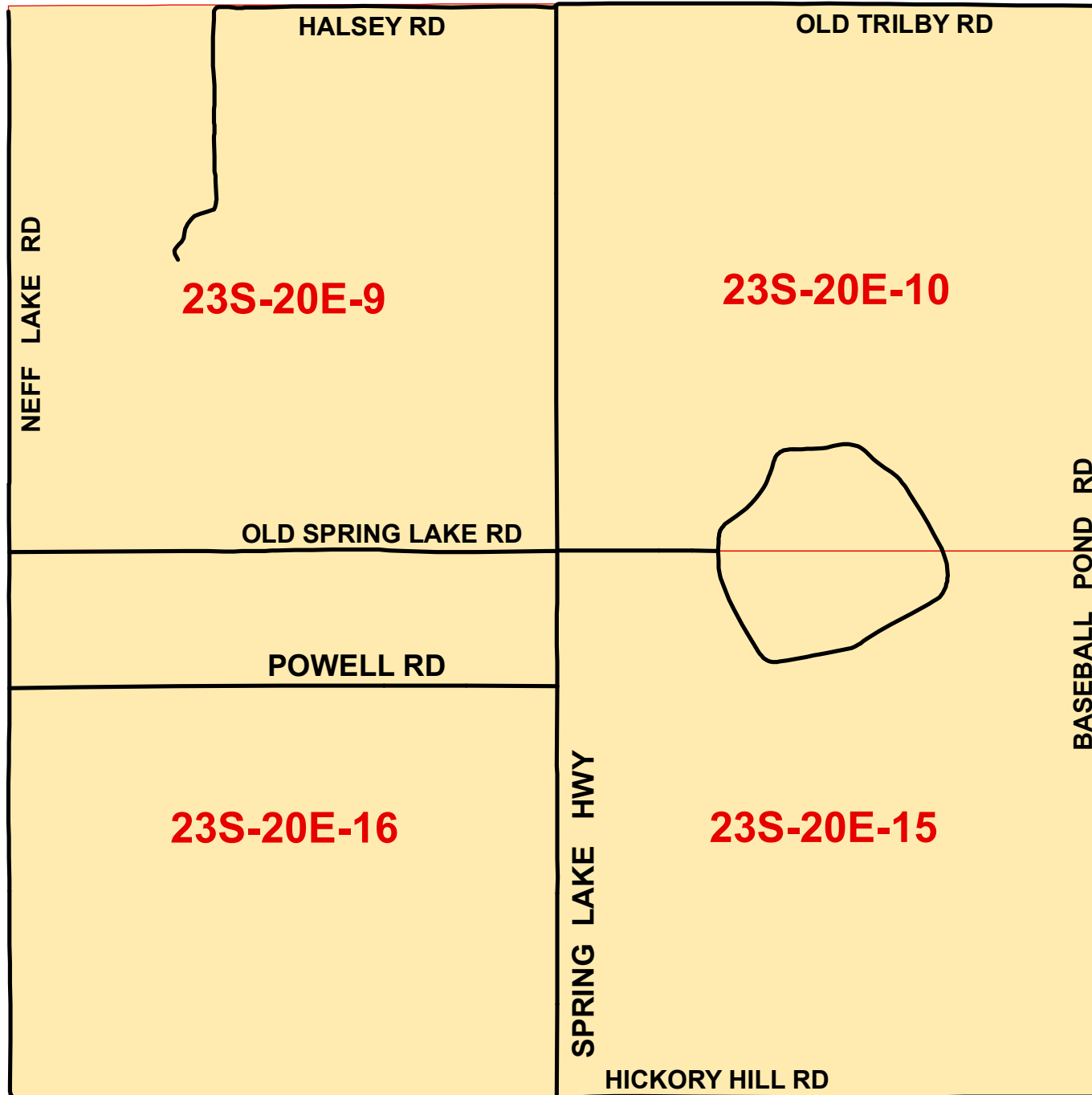
Public Land Survey (PLS)
Township - Range - Section
Example: Township 21 South,
Range 20 East, Section 24
(Hernando County
portion ONLY)



6/23/2016
1:10,000



Historic Rural Communities: Spring Lake, Florida



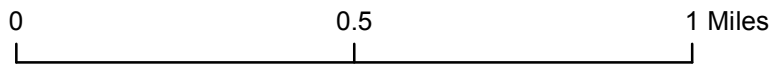
 Spring Lake



Public Land Survey (PLS)
Township - Range - Section
Example: Township 23 South,
Range 20 East, Section 15

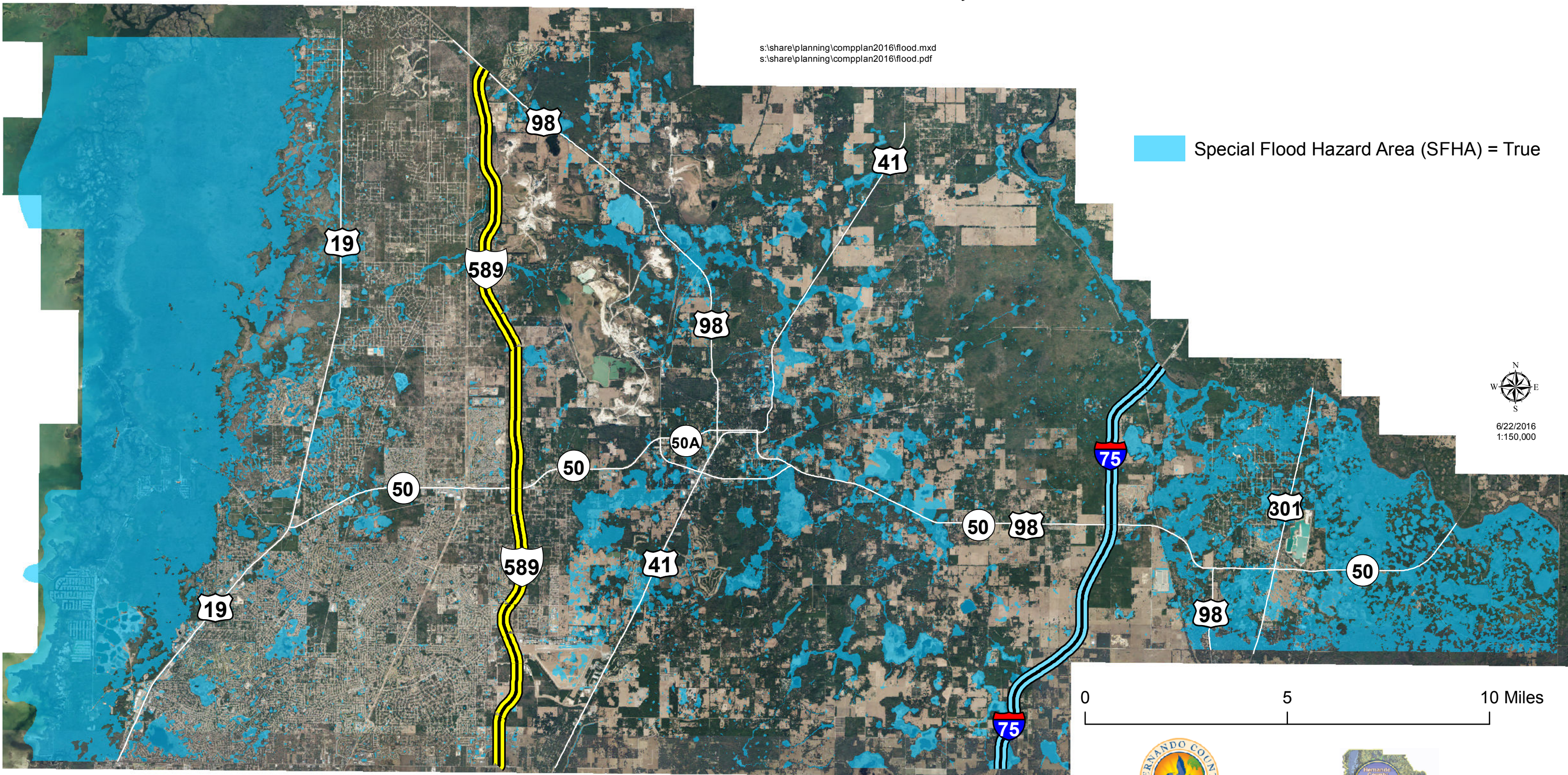


6/22/2016



Flood-Prone Areas - Hernando County, FL

s:\share\planning\compplan2016\flood.mxd
s:\share\planning\compplan2016\flood.pdf



Source: Hernando County Property Appraiser -
GIS.DFIRM_SpecialFloodHazArea_F

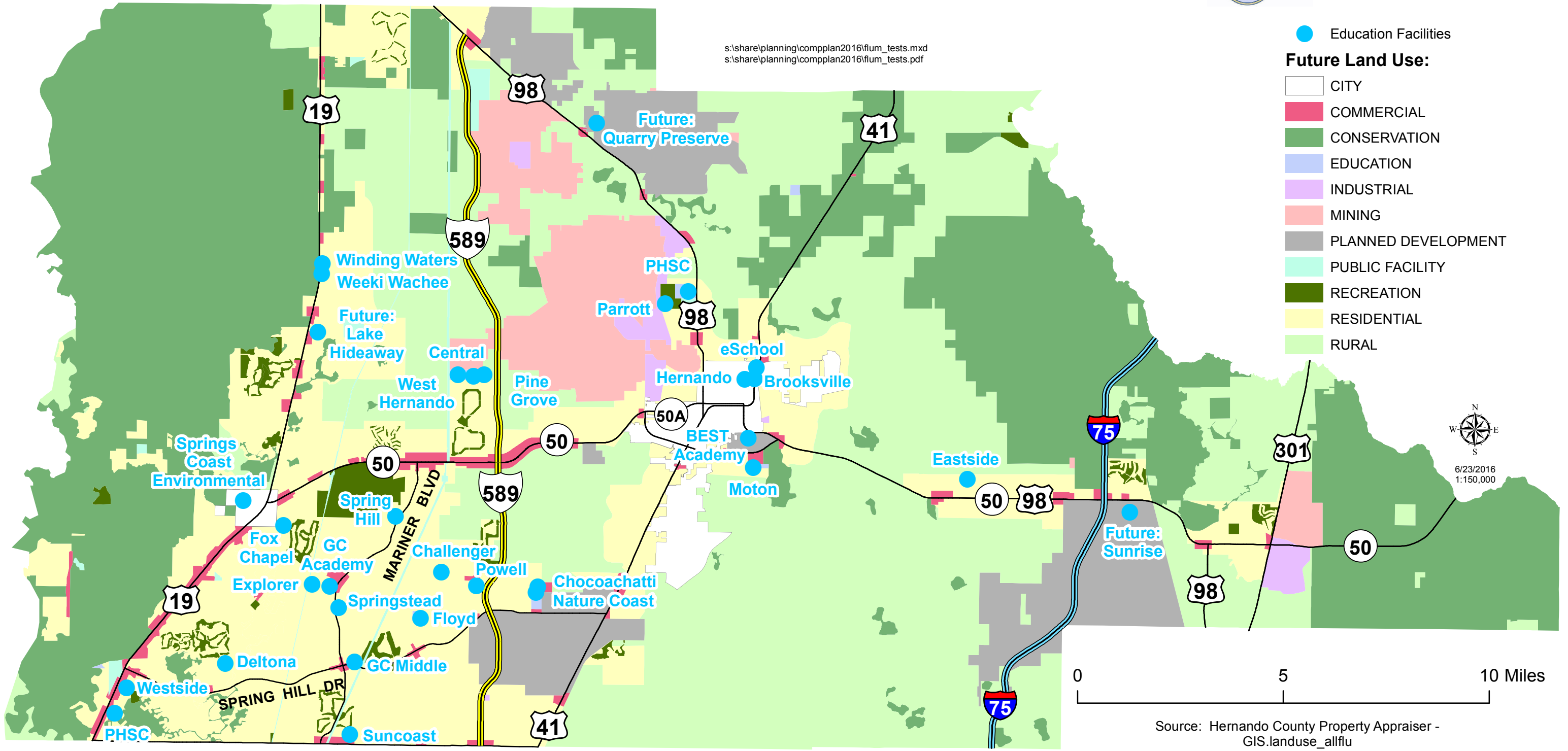




Future Land Use Series - Education Facilities - Hernando County, FL



s:\share\planning\compplan2016\flum_tests.mxd
s:\share\planning\compplan2016\flum_tests.pdf



- Education Facilities
- Future Land Use:**
- CITY
- COMMERCIAL
- CONSERVATION
- EDUCATION
- INDUSTRIAL
- MINING
- PLANNED DEVELOPMENT
- PUBLIC FACILITY
- RECREATION
- RESIDENTIAL
- RURAL



6/23/2016
1:150,000

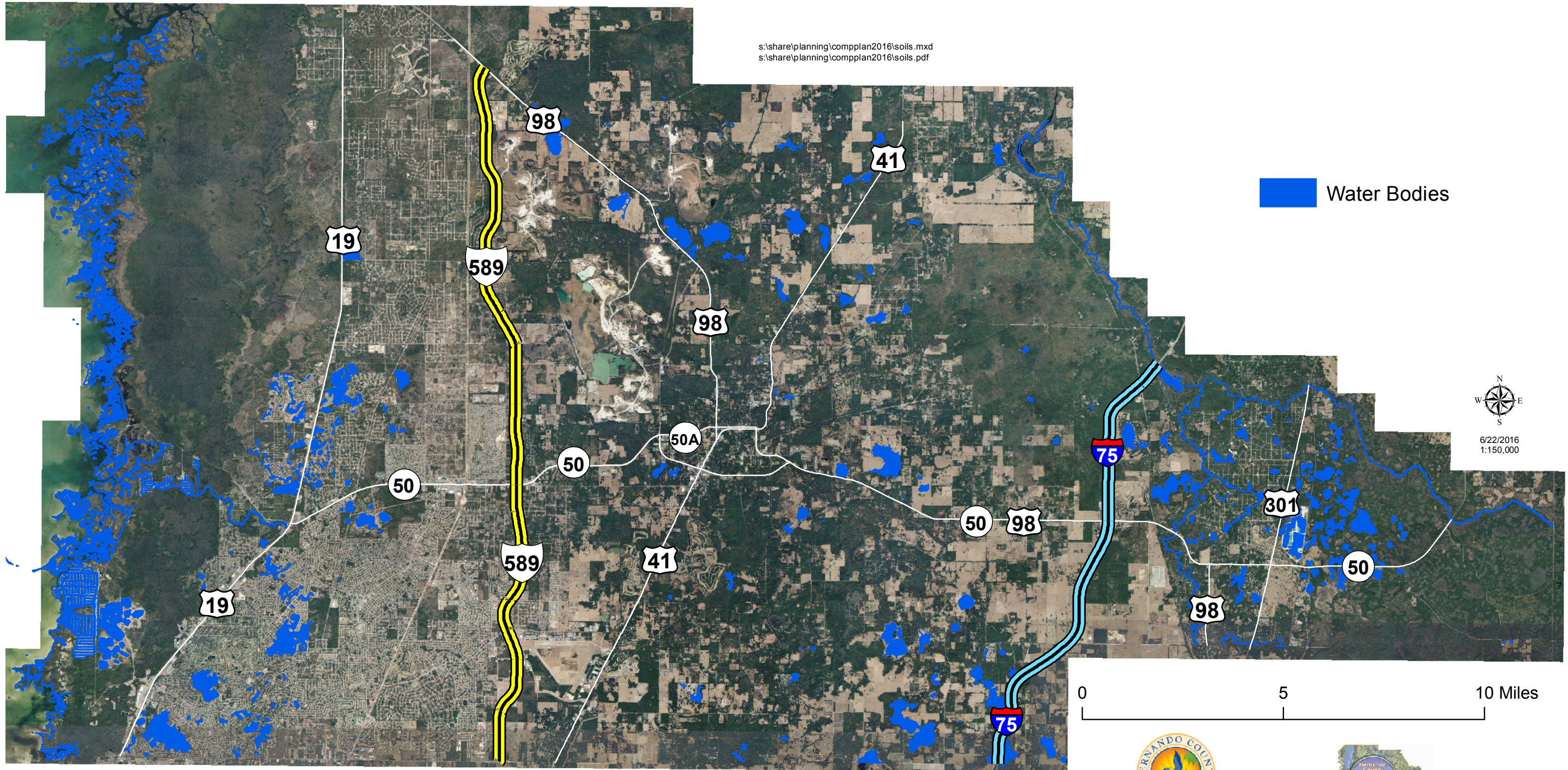


Source: Hernando County Property Appraiser - GIS.landuse_allflu

COUNTY LINE RD

Lakes, Rivers & Bays - Hernando County, FL

s:\share\planning\compplan2016\soils.mxd
s:\share\planning\compplan2016\soils.pdf

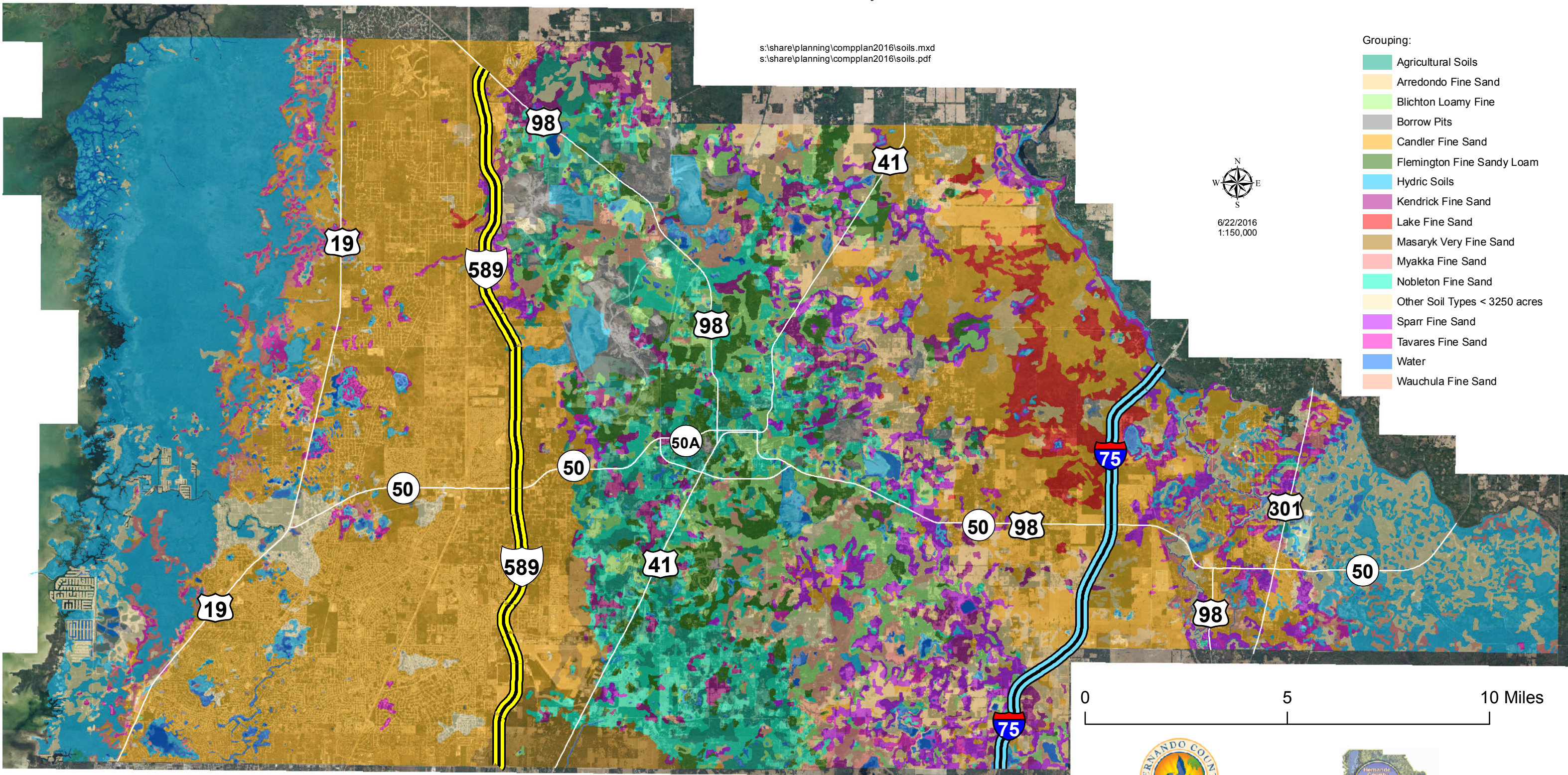


Source: Hernando County Property Appraiser -
GIS.AllLakes; GIS.Coast_River; GIS.USGS_IMAGES;



Soils - Hernando County, FL

s:\share\planning\compplan2016\soils.mxd
s:\share\planning\compplan2016\soils.pdf



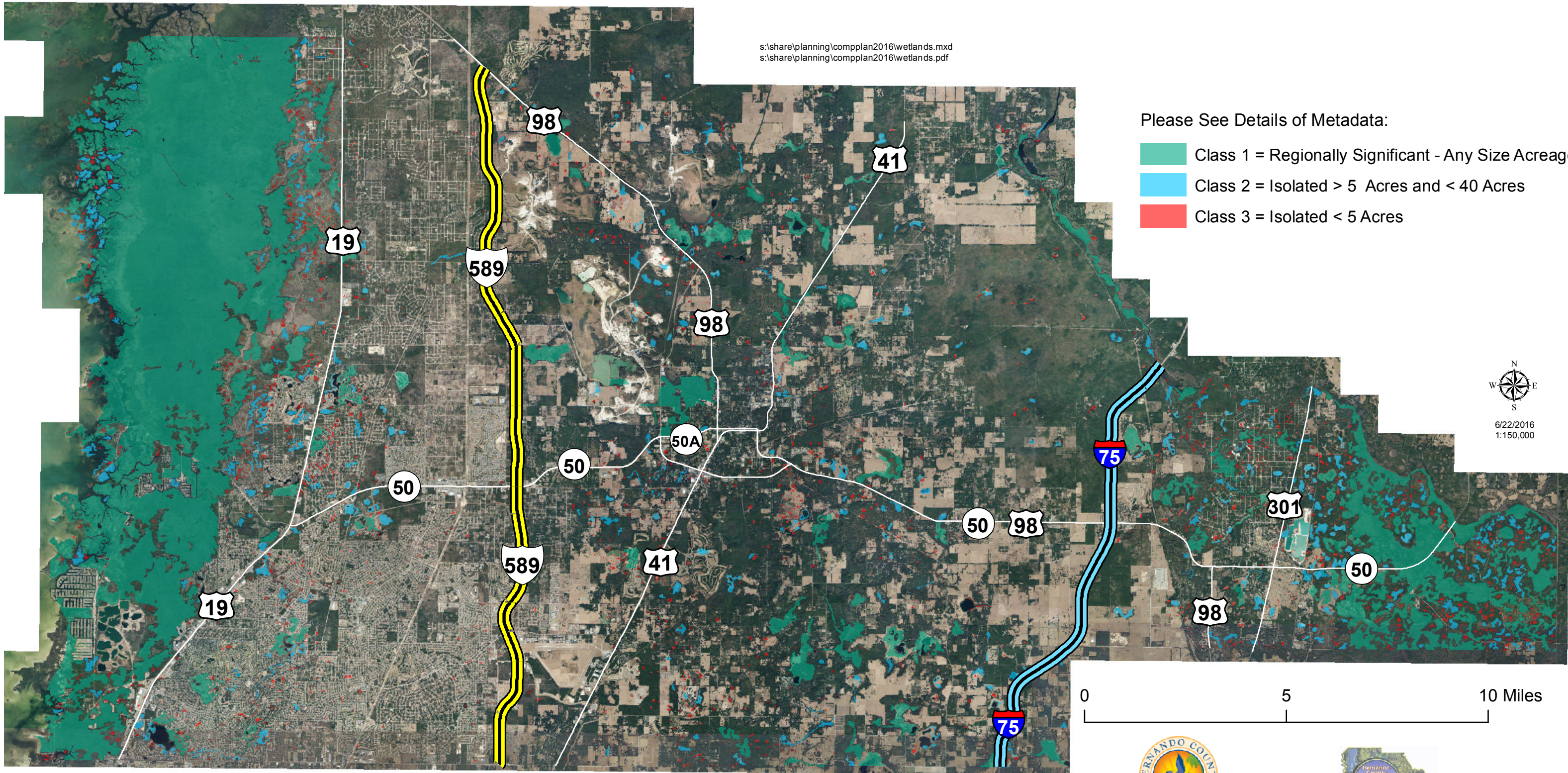
- Grouping:
- Agricultural Soils
 - Arredondo Fine Sand
 - Blycton Loamy Fine
 - Borrow Pits
 - Candler Fine Sand
 - Flemington Fine Sandy Loam
 - Hydric Soils
 - Kendrick Fine Sand
 - Lake Fine Sand
 - Masaryk Very Fine Sand
 - Myakka Fine Sand
 - Nobleton Fine Sand
 - Other Soil Types < 3250 acres
 - Sparr Fine Sand
 - Tavares Fine Sand
 - Water
 - Wauchula Fine Sand

Source: Hernando County Property Appraiser - GIS.SCS_Soil_Survey



Wetlands - Hernando County, FL

s:\share\planning\compplan2016\wetlands.mxd
s:\share\planning\compplan2016\wetlands.pdf



Please See Details of Metadata:

- Class 1 = Regionally Significant - Any Size Acreage
- Class 2 = Isolated > 5 Acres and < 40 Acres
- Class 3 = Isolated < 5 Acres

Source: Hernando County Property Appraiser - GIS.HernCompPlanWetlands

