

Contact Person: Deborah A. Alaniz, Administrator

Deborah A. Alaniz Assisted Living Facility  
10394 Calico Warbler Ave.  
Weeki Wachee, Florida 34613  
Phone: 352-597-9633

GENERATOR ADDENDUM TO DEBORAH A. ALANIZ – ASSISTED LIVING FACILITY  
COMPREHENSIVE EMERGENCY MANAGEMENT PLAN

Pursuant to Emergency Rule 58Aer 17-1, entitled Procedures Regarding Emergency Environmental Control for Assisted Living Facilities,” this addendum is supplied as an addendum to my current Comprehensive Emergency Management Plan.

Scope of Addendum: this Addendum is intended to address the implementation of a plan to ensure ambient temperature will be maintained at or 80 degrees Fahrenheit for a minimum of ninety six (96) Hours in the event of the loss of electrical power to our assisted living facility.

2. The area of the Facility to be kept below 80 degrees Fahrenheit. The whole house (2,368 sq ft) See Floor Plan.

3. HVAC

Getting estimates for a home Generator install. See copy of Estimate. Have a appointment from Lowes on Nov, 27, 2017 and from Home DePot. Looking at two others, waiting for call backs

4. Procedures During Loss of Power - If power is loss, staff will make rounds on all residents to Ensure they have a power source (a flashlight is on all dressers.) And check the safety of all Residents. Staff will perform the following:

- 1. Notify the power company of the loss of electrical services by calling the Withalacocoohee Electric at 352-596-4000.
- 2. Staff will check all breakers on electric box and reset if necessary.
- 3. Staff will contract the Administrator/Manager.
- 4. If power remains off for longer than 15 minutes the staff will engage the generator.

5. Square Footage of cooled area is 2, 368 sq ft.

6. How many people (residents and staff) do you plan to locate in this cooled space/area?  
6 residents 2 staff

7. Will there be beds available in the cooled area?

- a. How many? 6
- b. Do you have these beds onsite? Yes

8. Where is the generator located? Will be located on side of house where electric box is. Have a Portable Generator on site in shed with gas.

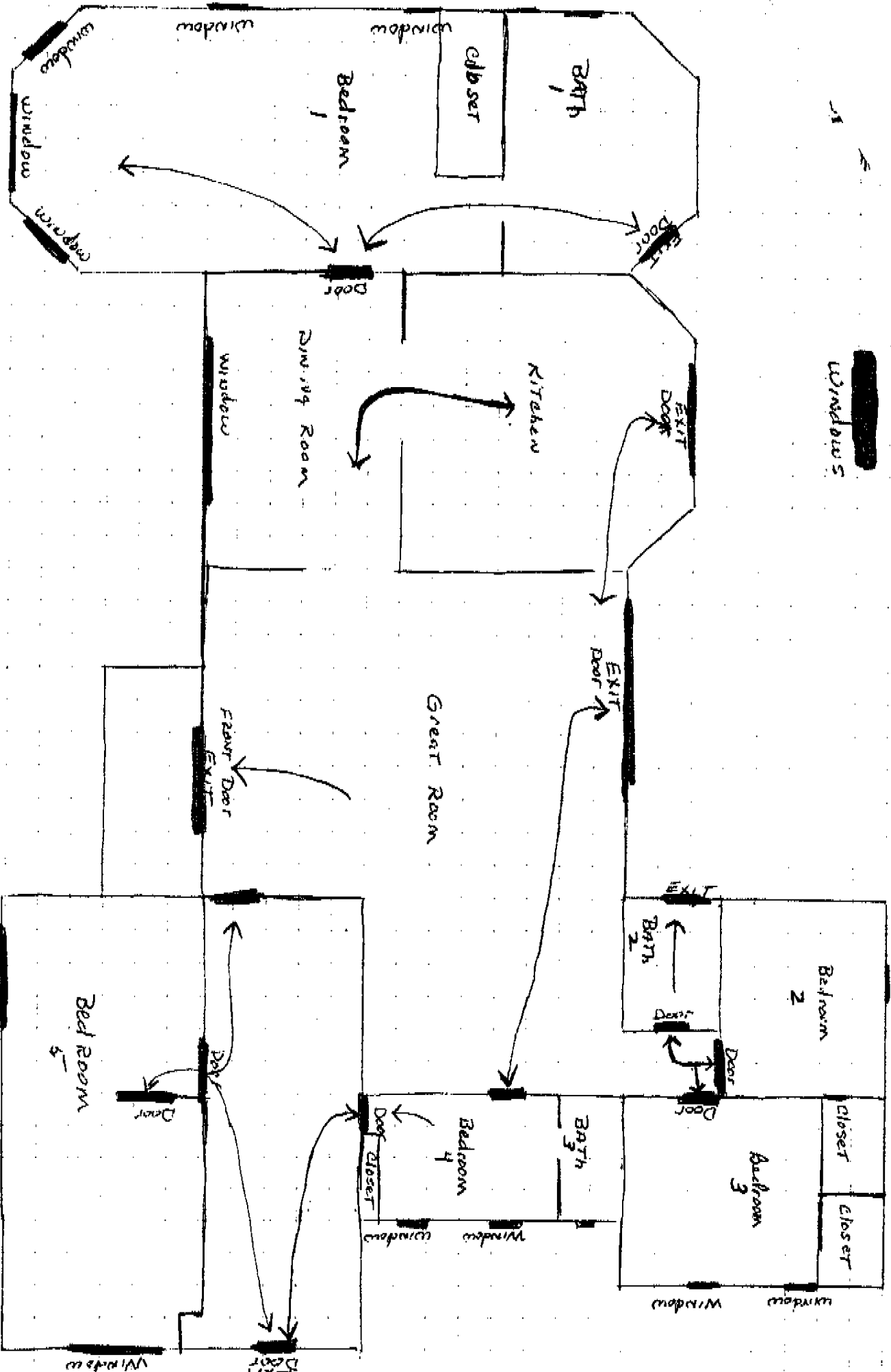
Deborah A. Alaniz Assisted Living Facility

pg 2

9. Describe the fuel type you will need to operate the generator? Liquid Propane.
10. What is the Max capacity of fuel for the generator? 250 gallon tank of the generator I'm looking at. Still getting more estimates.
11. How much fuel is located on site and where is it stored? 30 gallons for portable generator in Shed. Other Pending when new generator is installed.
12. How is the generator, fuel supply, and all equipment protected from the debris and any impact? Generators are self contained in their own enclosure. All units and fuel will be anchored onto the Concrete slab.
13. Provide a maintenance schedule for both the Generator and cooling system (HVAC, Portable A/C Etc.) to include minimal monthly test of operation of 30 minutes or more under at least 30 Percent of rated capacity.  
Upon installation the installer will be providing training. Thereafter training will be provided Each time the generator is being tested until all staff is proficient in its operation.
14. Provide documentation of maintenance testing reports.  
Sample forms enclosed. Will be typing forms out.
15. State the procedure of how your facility will refuel after an emergency. If a fuel agreement is Established, please provide the agreement. Not sure yet until a unit gets installed.
16. Provide a training procedure and schedule to ensure staff is aware of how to operate the Emergency power to the facility. Sample form enclosed.
17. Attach a letter from a mechanical contractor with the quote approving the tonnage required to Cool the space indicated to include the number of people to be house in the space.  
N/A yet until more quotes
18. Attach a letter from an electrician with a quote specifying generator capacity required to run the System and fuel for 96 hours.  
Waiting for call backs for appointments.
19. Attach a construction implementation timeline.  
N/A until I get all estimates
20. Provide documentation to show the generation for the facility has been installed and is operable.  
Will provide when generator is installed.

10394 Calico Warbler Ave  
Brooksville FL 34613

Windows







TO: Debbie      RE: Deborah A Alaniz ALS      FOR: Gen set Project      Date : 11/1/2017

Thank you for opportunity to provide an estimate:

20kw Fortress Gen set    \$4,808.75

200 Symphony ATS      \$737.50

In Bound freight      \$300.00

BobCat rental:          \$300.00

Elec material:          \$500.00

2 men 2 days:          \$1,400.00

Estimate:                \$8,000.00

Gas by others. No permit included.

Any questions or concerns, please feel free to call or contact us.

We look forward to a successful business relationship

Steve Parker

On-Site Power

1726 Magnolia Ave.

Ocala, FL. 34475

PH: 352-671-1090

FAX: 352-671-7879

Cell: 352-895-3500

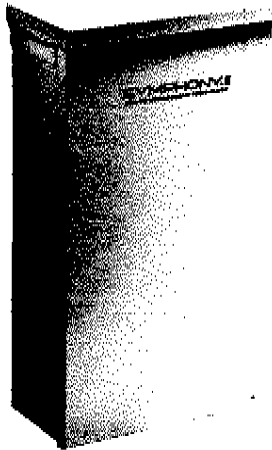
Email: [Steve@On-SitePower.com](mailto:Steve@On-SitePower.com)

WEB: [www.On-SitePower.com](http://www.On-SitePower.com)



# SYMPHONY® II POWER MANAGEMENT SYSTEM

Symphony® II Power Management System automatically balances the power needs of your home's electrical loads — including high-wattage items like air conditioning units, electric stoves and electric dryers — to give your family uninterrupted, whole-house power with a smaller, more affordable home generator.



## BRIGGS & STRATTON® THE SMART CHOICE

For the discerning homeowner that is looking for the smartest, most reliable permanent backup power solution.



### Smart Power

- Active monitoring allows you to purchase a smaller, more affordable home generator system
- The smart way to direct backup power anywhere in your house, without the need for a large, expensive generator

### Cost Effective

- Lower fuel costs
- Lower installation costs
- Reduced initial investment
- Wired into your home's existing wiring, saving even more on the cost of installation

### Reliable

- Load management protects against generator overload so your family can continue with its daily routine uninterrupted

### Flexible

- Lets you prioritize the use of up to 8 high-wattage appliances based on your family's specific power needs

### Customizable

- Customized installation that can easily be adapted to meet your changing power requirements

To learn more, visit [BRIGGSandSTRATTON.COM](http://BRIGGSandSTRATTON.COM)



## SYMPHONY® II TRANSFER SWITCH OPTIONS

<b>AMPS</b>	100A, 150A or 200A
<b>VOLTAGE</b>	120/240V
<b>COMMON FEATURES</b>	2 Poles, 60Hz Frequency, NEMA 3R, UL 1008 Listed
<b>POWER MANAGEMENT</b>	Whole House, Symphony® II Power Management System
<b>PRIORITIES</b>	120/240V 8 Priorities with Unlimited "Lockouts"
<b>MODULES</b>	50A, Low Voltage for HVAC, or Dual Low Voltage
<b>MONITORING</b>	Conventional Outlet Plug-In Monitor System Status and Availability of Managed Loads Service Entrance
<b>DISCONNECT*</b>	Yes

\* Review local codes to determine if a transfer switch with separate service entrance disconnect is required.