



MOVING FORWARD



Jeffrey Rogers
Hernando County Administrator

Growing Smartly

Hernando County Community Summit
May 16, 2019
Silverthorn Country Club

INFRASTRUCTURE & GROWTH



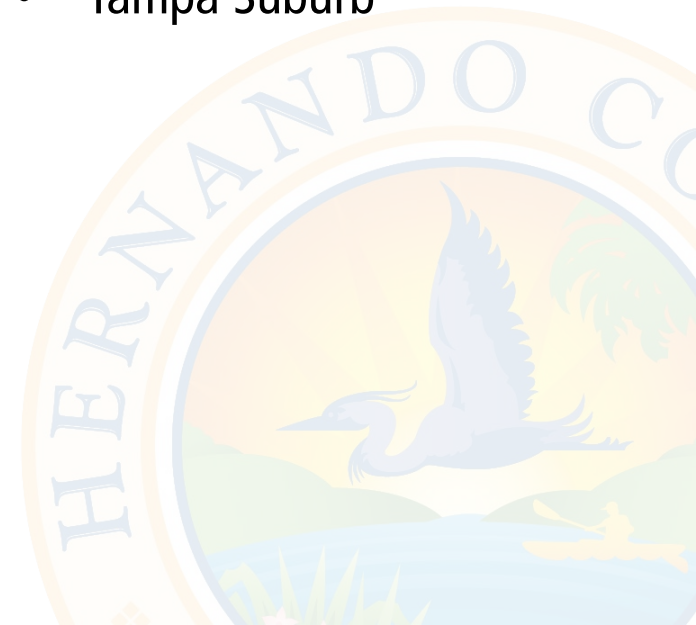
INFRASTRUCTURE & GROWTH

Infrastructure

- County Line Road Realignment
- I-75 / I-50 Frontage Road
- East Side Water Plant
- Airport Waste Water Plant Expansion
- Helicopter Drive Road Expansion
- Reconstruction of Taxiway Alpha.
- Telecom and Technology Drive
- Removal of Old T-hangers at Airport.

Growth Corridor

- Suncoast Expansion
- I-75 Expansion
- SR 50 Expansion
- Tampa Suburb



TOURISM / QUALITY OF LIFE



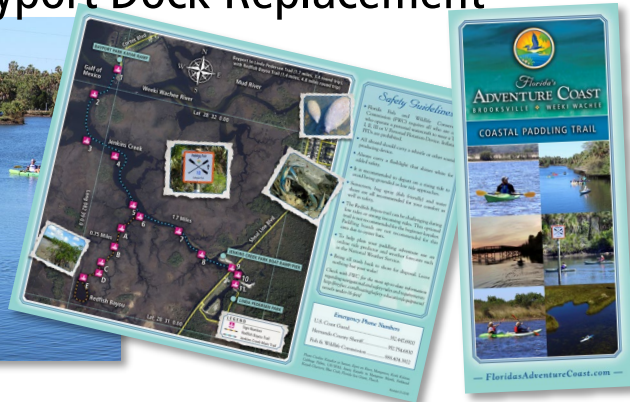
TOURISM

For the first time in history:
TDT COLLECTIONS SURPASSED \$1M

Hosted Bike Florida Spring Tour in April 2019 with \$989,620.73 of economic impact for Brooksville & Inverness



Bayport/Linda Pederson Coastal Paddling Trail and Kayak Launch. Bayport Dock Replacement



Worked with Brooksville Main Street to sponsor & launch the Inaugural Good Neighbor Trail Ride



TOURISM

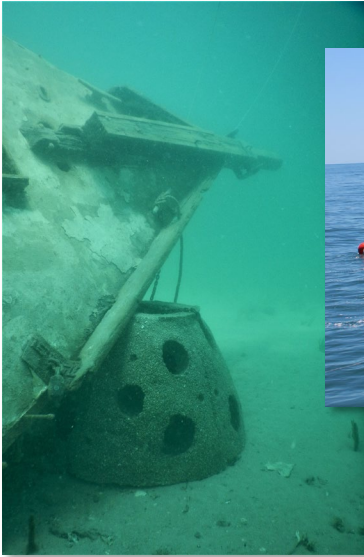
Historic Brooksville

- Festivals
- Destination Wedding Venue
- Capital Funding



**"IT'S BETTER IN
BROOKSVILLE."**

QUALITY OF LIFE



Reef Expansion

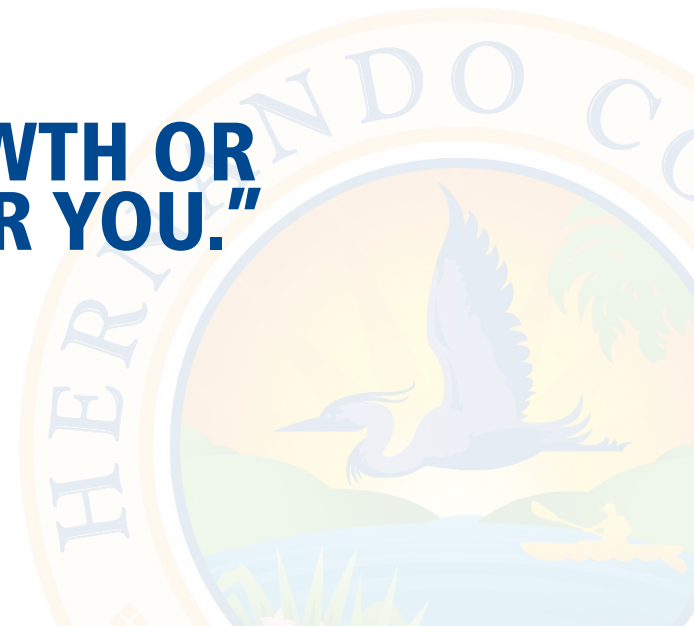
- Ghost Ship

Protection /
Restoration of Weeki
Wachee River



PLANNING

**“PLAN FOR GROWTH OR
IT WILL PLAN FOR YOU.”**



PLANNING AREAS OF SUCCESS

- Transportation
- Comprehensive Plan
- Space Needs
- Solid Waste

PLANNING AREAS FOR IMPROVEMENT

- County Budget Planning
- Capital Improvement Plan
- Parks Master Plan (Anderson Snow)
- Wastewater Master Plan

CHALLENGES AND OPPORTUNITIES



CHALLENGES AND OPPORTUNITIES

- Changing Development Trends
- Changing Demographics
- Business-Friendly Policies / Protection of Businesses
- Permitting Efficiencies
 - Online / Automated Permitting
 - Non-Duplicative Permitting With Other Agencies
 - Right-of-Way / Site Permitting
- Governmental, Organizational & Community Cooperation
- **HEADLINES !!**



CHALLENGES AND OPPORTUNITIES

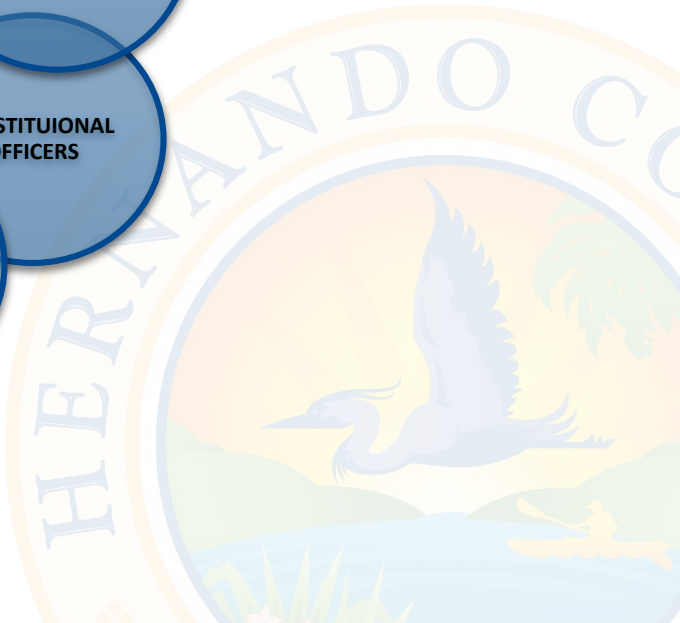
Positive Press Opportunities

```
graph TD; A[Positive Press Opportunities] --> B[County Newsletter]; B --> C[Community Involvement];
```

County Newsletter

Community Involvement

RELATIONSHIPS



DISCUSSION

