

Anderson Snow District Park Master Plan

Task 1B: Park Conditions Report

March 13, 2020

Prepared by the Mark & Marianne Barnebey
Planning & Development Lab

Prepared for the Hernando County Board of
County Commissioners



Table of Contents

Introduction	4
Methodology and Public Engagement	5
Anderson Snow Park’s Current Conditions	7
Anderson Snow Park’s Usage	24
Key Considerations	28
Conclusions and Next Steps	29

List of Figures

Figure 1: Stakeholders Envisioning Improvements to Anderson Snow Park	5
Figure 2: Community Members Participating at the Open House	6
Figure 3: Map of Hernando County Parks Near Spring Hill	8
Figure 4: Aerial Photo of Anderson Snow Park	9
Figure 5: Anderson Snow Park’s Contour Map	10
Figure 6: Anderson Snow Park ’s Baseball Fields	11
Figure 7: Anderson Snow Park’s Batting Cages	11
Figure 8: Anderson Snow Park’s Soccer Fields	12
Figure 9: Anderson Snow Park’s Playground	12
Figure 10: Map of Anderson Snow Park’s Structures	13
Figure 11: Anderson Snow Park’s Access Points	16
Figure 12: Anderson Snow Park’s Entry Sign	17
Figure 13: View of Anderson Snow’s Entryway from Anderson Snow Road	17
Figure 14: Anderson Snow Park’s North Parking Lot	17
Figure 15: Suncoast Trailhead	18
Figure 16: Anderson Snow Road Looking North from the Main Entrance	18
Figure 17: Hernando County Transit The Bus Route Map	19
Figure 18: Example of the Lights on Field 3	20
Figure 19: Anderson Snow Park’s FEMA Flood Zones	21
Figure 20: Stormwater Detention Area	21
Figure 21: Anderson Snow’s 43-Acre Undeveloped Parcel	22
Figure 22: Annual Number of Players in Anderson Snow Park’s Sports Leagues	24
Figure 23: First Hernando Soccer Club	27
Figure 24: Stakeholders Describing Anderson Snow Park	29

Introduction

Hernando County has an expansive multi-use park system that includes over 20 developed parks on 876.5 acres. These parks provide Hernando County residents with land dedicated to both passive and active recreational activities, ranging from simply enjoying the outdoors to swimming, boating, and engaging in team sports.

Anderson Snow District Park is one of Hernando County's premier sports and recreational complexes. Located just east of Spring Hill, FL, in the south-central part of Hernando County, Anderson Snow is home to baseball/softball and soccer fields, a playground and open play areas, bicycle trails, pavilions, restrooms, and picnic shelters. It also contains the infrastructure necessary to support team sports, including a concessions booth, press box, and clubhouse. These facilities serve baseball, softball, and soccer leagues that have over 3,650 players every year. In addition, Anderson Snow hosts numerous community events throughout the year that can service over 10,000 residents.

To get the most out of this important community asset, the Hernando County Planning Department has partnered with Florida State University's Department of Urban & Regional Planning and the Mark & Marianne Barnebey Planning and Development Lab (the "FSU Research Team") to develop a park master plan to guide the improvement and potential expansion of Anderson Snow Park. The purpose of the plan is to optimize the park's assets; to strategically plan future park upgrades and expansion; to optimize the sports experience; to provide opportunities for public/private partnerships; and to prepare a long-term plan and vision that meets the needs of County residents, contributes to County tourism objectives, and has a positive impact upon the local economy.

The master planning process will be comprised of three major phases: 1) an assessment of the park's current conditions, 2) a community-driven assessment of the park's needs and creation of a future vision, and 3) the development of the Anderson Snow Park Master Plan. This report summarizes the findings of the first phase of the master planning process by providing a comprehensive assessment of the park's current conditions including its sport facilities, additional amenities, supporting infrastructure, accessibility, and growth potential. The park conditions outlined in this report will provide a foundation for the ongoing Needs Assessment that will be completed during the second phase of the master planning process.

The Park Conditions Report is organized into three major sections. First, the report will outline the methodology the Barnebey Lab employed to conduct the conditions assessment. The second section will then discuss the assessment's findings for the park's physical features and characteristics. Finally, the third section will provide preliminary conclusions by outlining how the conditions assessment will inform the master planning process, what the next steps in the process are, and how the community can be engaged.

Methodology and Public Engagement

To assess the conditions of Anderson Snow Park, the FSU Research Team employed a two-pronged approach comprised of a Site Assessment and Stakeholder Engagement.

Site Assessment

The FSU Research Team conducted two extensive site visits. On these visits, the Team:

- Inventoried existing park facilities,
- Assessed the condition of park facilities, and
- Photographed key park features.

The data collected on these site visits were then mapped using Geographic Information Systems (GIS). These site visits were the foundation for the information provided in this report.

Stakeholder Engagement

Master planning is fundamentally a community-driven process. Community input will provide the primary basis for understanding what the park's needs are, shaping the future vision for the park, and identifying how Anderson Snow could be upgraded and expanded. Consequently, the FSU Research Team in coordination with the Hernando County Planning and Parks and Recreation Departments conducted an extensive community and stakeholder engagement process.

The multifaceted engagement process offered the Hernando County community with several different engagement opportunities to provide as many people as possible with a chance to be involved. To date, the stakeholder engagement process has primarily been comprised of a Stakeholder Meeting, a Community Open House, and a Public Survey.

Stakeholder Meeting: On January 23, 2020 the FSU Research Team conducted a stakeholder meeting with key community stakeholders who are closely involved with Hernando County's park system. Representatives from the County, sports leagues, and community organizations were led through a facilitated discussion of Anderson Snow's strengths and weaknesses and collaboratively created a vision for the future of Anderson Snow Park.



Figure 1: Stakeholders Envisioning Improvements to Anderson Snow Park

Community Open House: The FSU Research Team in coordination with Hernando County staff conducted a Community Open House at Anderson Snow Park on January 29, 2020 from 5:30 to 7:00pm. Attendees walked through seven stations to answer a series of questions identifying how Anderson Snow does and does not meet the community’s needs and what new features and amenities they would like Anderson Snow to have.



Figure 2: Community Members Participating at the Open House

Public Survey: Based on the feedback received at the Stakeholder Meeting and the Open House, the FSU Research Team developed an online survey to provide as many residents as possible with an opportunity to participate in the planning process. The survey asked participants to identify how they use Anderson Snow Park, to pinpoint what would encourage them to use the park more, and to rate the desirability of potential new park features. The survey was distributed to the stakeholder group and was advertised to the community through Hernando County’s webpage and social media outlets. The survey was open for two weeks from February 2nd until February 14th. In that time, 1,058 residents participated in the survey adding their voice to the master planning process.

While the results of the Stakeholder Meeting, Open House, and the Survey will be discussed in greater detail in Deliverable 2: Needs Assessment, the stakeholder engagement was a vital part of the conditions assessment by providing key insights into the conditions of the park’s facilities, and how the park is being used on a daily basis. In short, the stakeholder engagement provided a level of insight that cannot be replicated by a site assessment.

Anderson Snow Park's Current Conditions

This section will inventory and assess Anderson Snow Park's current conditions. Anderson Snow currently serves as a regional sports complex. As such, the park is oriented around its baseball/softball and soccer facilities. However, Anderson Snow has several features that provide notable opportunities for expanding Anderson Snow's existing facilities and uses. In particular, Anderson Snow has 43 acres of land that currently is only being used as overflow parking during major events.

This sections is organized by the park's key features and characteristics including Anderson Snow's:

- Location,
- Land and Topography,
- Sports and Recreation Facilities,
- Structures,
- Access,
- Lighting,
- Stormwater, and
- Underutilized Land.

Location

Hernando County's Park system consists of over twenty developed parks scattered throughout the County (see Figure 3). These parks range from reserves like Cypress Lakes Preserve that allow residents to enjoy the outdoors at their leisure to active parks such as Delta Woods that provide places to boat, swim and engage in team sports.

Of these parks, Anderson Snow is unique in that it is one of two parks within the County (Anderson Snow Park and Ernie Wever Youth Park) that has sports facilities large enough to support organized sports leagues. Consequently, Anderson Snow is vital to the Hernando County community, not only as a community amenity, but also as an economic development opportunity as tournaments and leagues can attract visitors from all over the state.

Anderson Snow Park is located at 1360 Anderson Snow Road just east of Spring Hill, Florida. The park is tucked between Anderson Snow Road and the Suncoast Parkway. Its location near Hernando County's largest population center (Spring Hill) provides most community residents with convenient access to the park.

More specifically, participants in the open house and stakeholder meeting said that proximity to Cortez Blvd and the Suncoast Parkway make it easy for people from all over the county area to enjoy the park. Stakeholders also mentioned that Anderson Snow's convenient location made it easier to access than many of Hernando County's other sports facilities, such as Ernie Wever Youth Park.

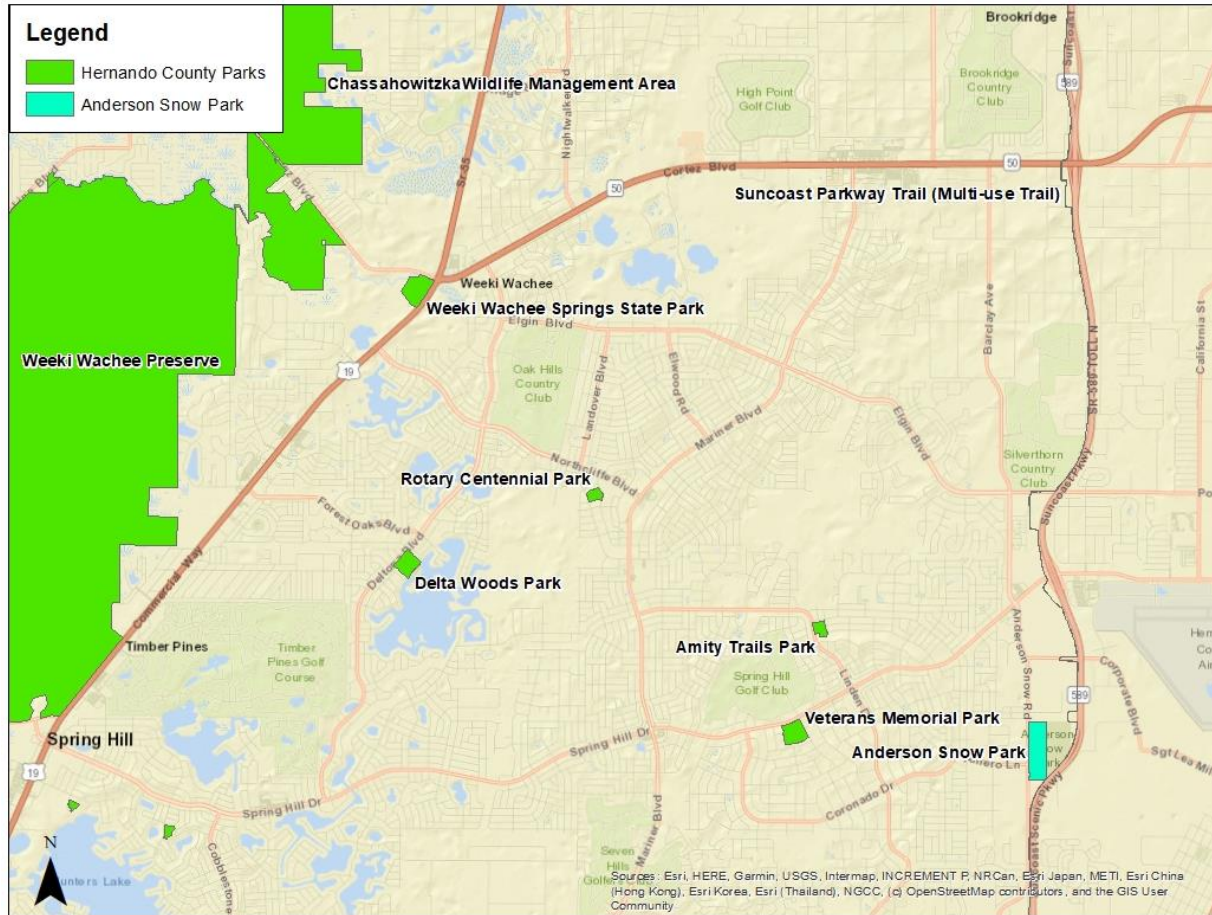


Figure 3: Map of Hernando County Parks Near Spring Hill

Land and Topography

Anderson Snow Park’s existing sport facilities are located on a 49.9 acre rectangular parcel adjacent to Anderson Snow Road. The majority of this land is improved and currently houses the park’s sports facilities, parking lots, and stormwater detention facilities. As seen in Figure 4, just east of the sports facilities is another 43-acre county-owned parcel that currently is vacant. This undeveloped property will be discussed in more detail later in the report, but it provides exciting opportunities for park expansion.

Despite being characterized by sports fields that are required to be flat, Anderson Snow has a surprising amount of topographic change. Figure 5 displays a contour map of the park’s elevations where reds and whites are higher elevations and greens and blues are lower elevations. The park’s lowest areas are in the southwest corner of the park and just south of the soccer fields. As will be discussed later, these areas are part of the park’s stormwater detention system. The park’s highest points are near the batting cage and the soccer clubhouse.



Figure 4: Aerial Photo of Anderson Snow Park

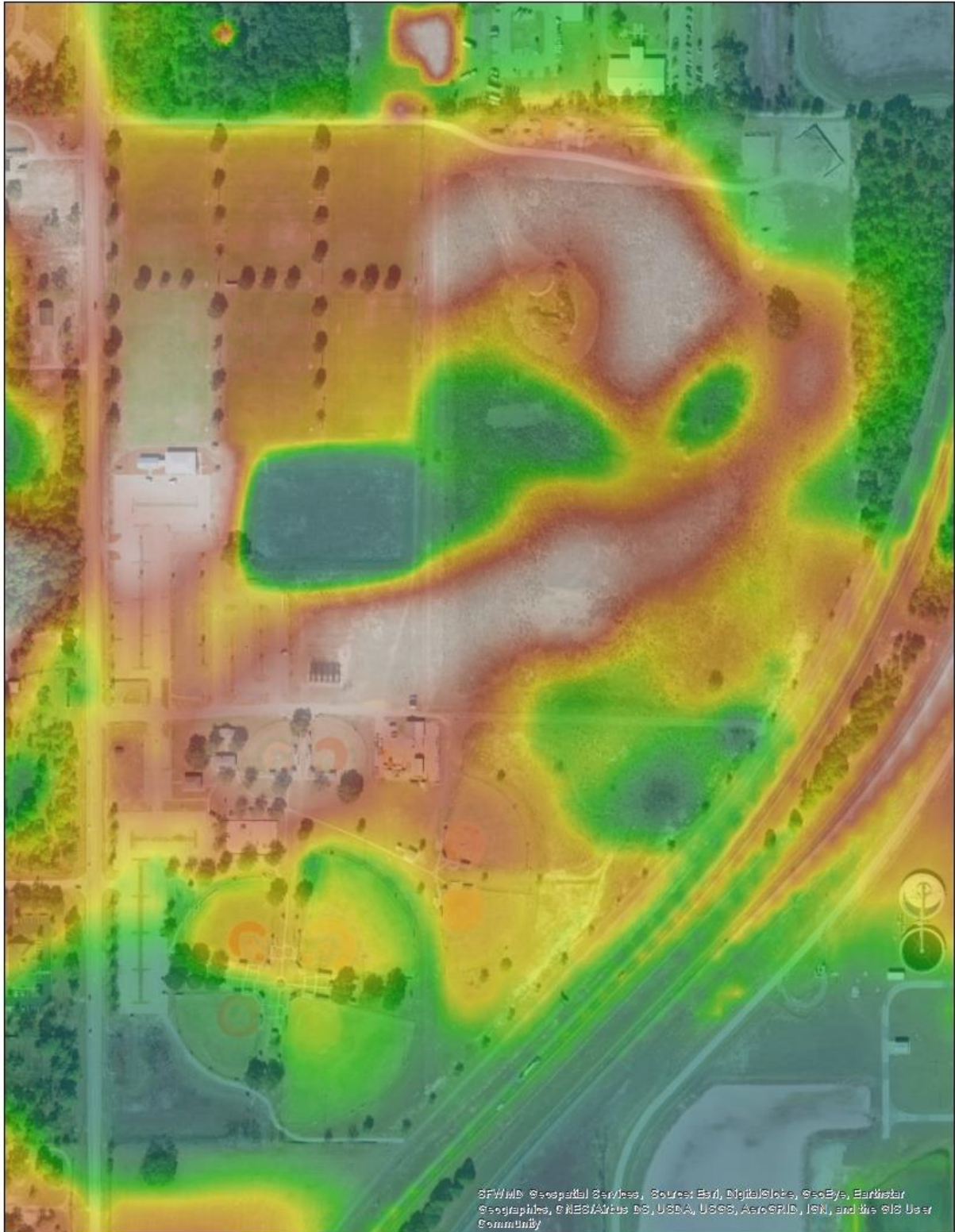


Figure 5: Anderson Snow Park's Contour Map

Sports and Recreational Facilities

Baseball/Softball Fields

Anderson Snow Park has eight baseball/softball fields of varying sizes. As seen in Figure 6, fields 1 through 4 are a quad of fields on the south end of the park. These four fields are oriented around a flag-pole in the center of the quad interconnected by sidewalks running between each field. Ranging in size from approximately 200 to 300 feet from home plate to the foul pole, fields 1-4 include the largest fields in the park. Each field is complete with two dugouts, two small sets of bleachers, and a press box located behind home plate.



Figure 6: Anderson Snow Park's Baseball Fields

Fields 5 and 6 are located near the park's entrance in between the pavilion and the maintenance buildings. Primarily used for tee-ball and younger players, these are the smallest fields in Anderson Snow, ranging from approximately 115 to 125 feet from home plate to the foul pole. Unlike the park's other fields, fields 5 and 6 are not well lit. This was a major concern raised by baseball and softball stakeholders as it limited how much those fields could be used.



Figure 7: Anderson Snow Park's Batting Cages

Approximately 200 feet in length, fields 7 and 8 are roughly the same size as fields 2 and 3, a standard little league size. Just like all of the fields at Anderson Snow, fields 7 and 8 have two dugouts, two small sets of bleachers, and a press box located behind home plate. These fields are well-lit and well-maintained. The fields are also supported by concession buildings, shaded picnic tables located between each field and a batting cage.

Soccer Fields

Anderson Snow Park is designed to support six full-sized soccer fields. These well-lit fields are lined by trees to provide a natural barrier between each field. They are also sloped and crowned to allow water to drain off the field. To accommodate the needs of a wide range age-groups and practice needs, the fields can be lined in different field configurations. For example, at the time of this study, the fields were lined to include two full-sized fields, four smaller half-sized fields for younger age-groups, and two full-size practice fields.



Figure 8: Anderson Snow Park's Soccer Fields

Despite being overused at times, the fields are kept in excellent condition by the park's maintenance staff. As will be discussed in the next section, the soccer fields are supported by a club house and pavilion on the south end of the fields.

Recreational Facilities

Playground: To provide an additional community amenity, Anderson Snow has an approximately 11,000 sq. ft. playground. Numerous Open House participants and survey respondents indicated that the playground was in need of an upgrade. The sand surface and the lack of play features were identified as being particularly problematic.

Pavilions: Providing much needed shelter from the sun and the rain, Anderson Snow also has a series pavilions scattered throughout the park. The two largest pavilions are located near the main entrance and next to the soccer clubhouse. Each of these pavilions has several picnic tables. Single picnic table pavilions are also located between all of the baseball fields.



Figure 9: Anderson Snow Park's Playground

Structures

Anderson Snow Park's sports fields are supported by seven structures that serve necessary functions to keep the park running smoothly. These structures include concession buildings, bathrooms, pavilions, and maintenance buildings. Figure 10 displays the location of each structure. The following provides the building characteristics for each of the major structures on the property including the year built, square footage, and market value.



Figure 10: Map of Anderson Snow Park's Structures



Bldg. #1: Maintenance Building

Building Characteristics

Year Built: 2000

Area (Square Footage): Around 1,790

Value: \$35,400



Bldg. #2: Concession Stand

Building Characteristics

Year Built: 2000

Area (Square Footage): Around 1,484

Value: \$40,865



Bldg. #3: Women's Restroom

Building Characteristics

Year Built: 2001

Area (Square Footage): Around 480

Value: \$14,222



Bldg. #4: Men's Restroom

Building Characteristics

Year Built: 2001

Area (Square Footage): Around 480

Value: \$14,222



Bldg. #5: Soccer Clubhouse

Building Characteristics

Year Built: 2006

Area (Square Footage): Around 4,138

Value: \$99,638



Bldg. #6: Concessions & Restrooms

Building Characteristics

Year Built: 2008

Area (Square Footage): Around 720

Value: \$29,394



Bldg. #7: Baseball Office

Building Characteristics

Year Built: 2008

Area (Square Footage): Around 1,276

Value: \$49,611

Access

Anderson Snow Park is primarily accessible by vehicle through a main entrance on Anderson Snow Road. However, as seen in Figure 11, the park has four additional points of entry:

- The two parking lots immediately north and south of the main entrance have driveways accessing Anderson Snow Road.
- A service road on the northern edge of the property accesses Anderson Snow Road.
- The park is also accessible by bike via the Suncoast Trail at the southeast corner of the property.



Figure 11: Anderson Snow Park's Access Points

The following highlights key features of Anderson Snow Park's accessibility including its entrance, parking, and bicycle and pedestrian access.

Entryway

Anderson Snow Park has one primary entryway that provides access to all of the park's facilities. The entryway has a gate and an entrance sign, but several stakeholders suggested that the current entryway does not provide a grand entrance to the park as the entry drive is intermittently lined by an unattractive chain link fence and leads directly west to the maintenance building instead of to a central focal point (Figure 13).



Figure 12: Anderson Snow Park's Entry Sign



Figure 13: View of Anderson Snow Park's Entryway from Anderson Snow Road



Figure 14: Anderson Snow Park's North Parking Lot

Parking

Anderson Snow currently has approximately 654 parking spaces, 19 of which are handicapped parking spaces. The paved parking lots are located on the west side of the park adjacent to Anderson Snow Road.

The parking lot is divided into two primary sections. The north lot, which provides easy access to the soccer fields, has 412 parking spaces. The south lot's 242 parking spaces provide easy access to the baseball fields. In

addition to the main entrance, each section of the parking lot is accessible directly from Anderson Snow Road through secondary entry ways. For major community events, such as the fourth of July, the 43-acre parcel on the east side of the park is also used as an overflow parking lot.

Bicycle and Pedestrian Access:

The Suncoast Trail is a 42-mile paved multi-use trail that runs north-to south along the Suncoast highway adjacent to Anderson Snow Park. The park currently has a trailhead and connector trail that provides direct access from the Suncoast Trail to Anderson Snow Park.

However, stakeholder feedback indicated that while many people do access the Suncoast Trail from Anderson Snow Park trailhead, very few travel to Anderson Snow via the Suncoast Trail.



Figure 15: Suncoast Trailhead



Figure 16: Anderson Snow Road Looking North from the Main Entrance

Anderson Snow Park is not supported by a wider bicycle and pedestrian network, so the overwhelming majority of park users access the park by personal vehicle. Most notably, Anderson Snow Road does not have a sidewalk or bike lane making it difficult and unsafe to walk or bike to Anderson Snow Park (Figure 16).

Transit Access

Anderson Snow Park is not currently served by Hernando County's transit system. Hernando County Transit's The Bus has four routes that primarily serve the Spring Hill area between US Hwy 19 and US Hwy 41. The Green Route is the closest route to Anderson Park, as it brings residents to the intersection of Spring Hill Drive and Anderson Snow Road about 1.4 miles from Anderson Snow Park. However, since there is no bicycle lane or sidewalk on Anderson Snow Road, accessing Anderson Snow Park from The Green Route is very difficult.

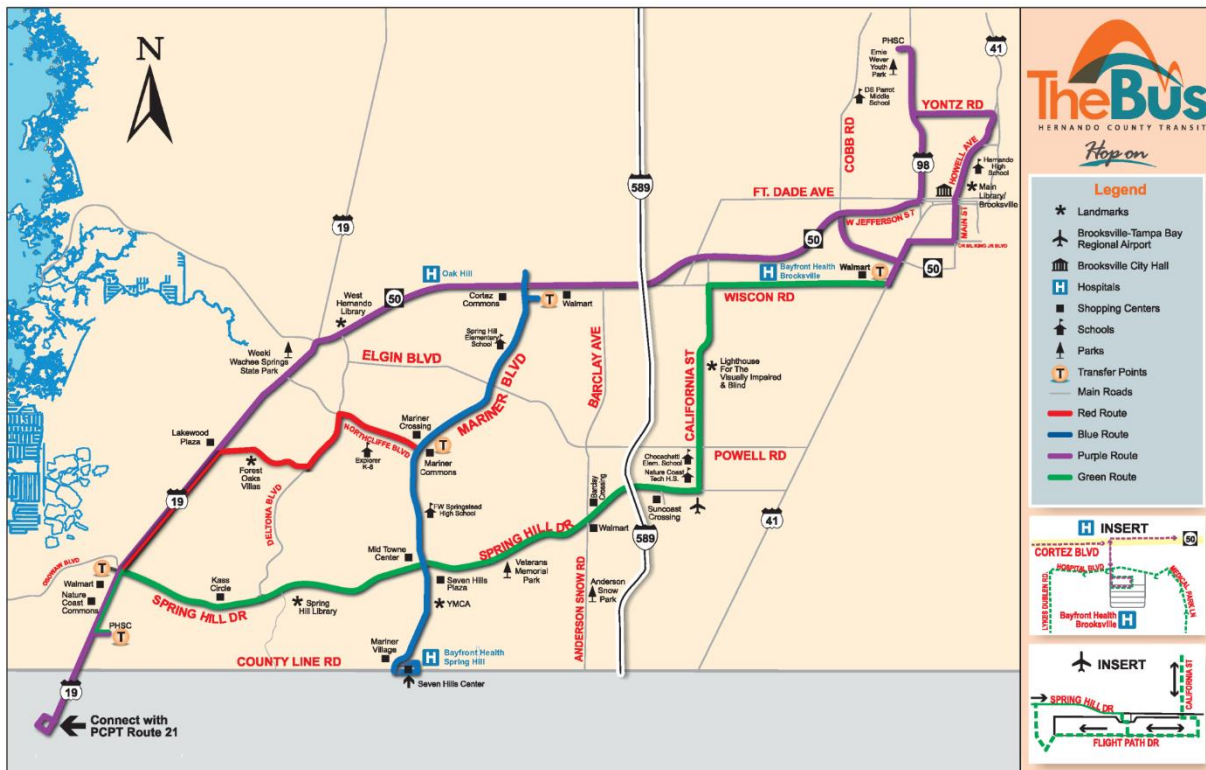


Figure 17: Hernando County Transit The Bus Route Map

Lighting

The majority of Anderson Snow Park is well lit. All six soccer fields and five of the baseball/softball fields have stadium lighting. However, fields 5 and 6 and the area around the concession stand do not have lights and can become dark at night. Stakeholders at the open house confirmed that many people do not feel comfortable going to the concession stand during night games so they are forced to use press box as a concession stand instead.



Figure 18: Example of the Lights on Field 3

Storm Water

As seen in Figure 5, Anderson Snow does not have a flat topography. As such, stormwater management is an important consideration for all park facilities. Consequently, stormwater detention areas are the park's third most prominent land use behind sports facilities and parking.

To understand the park's potential flooding threats, Figure 19 overlays the FEMA flood zones on top of Anderson Snow. Anderson Snow is partially surrounded by the FEMA 500-year floodplain (an area that has a 0.2% chance of flooding each year). However, only small parts of Anderson Snow fall within the 500-year floodplain, particularly the southern and eastern ends. Similarly, Anderson Snow's stormwater detention areas were the only parts of the park that were within FEMA's 100-year floodplain (1% chance of flooding each year). In short, flooding is a notable consideration for Anderson Snow, but it should not be a major hinderance to expanding and upgrading the park moving forward.

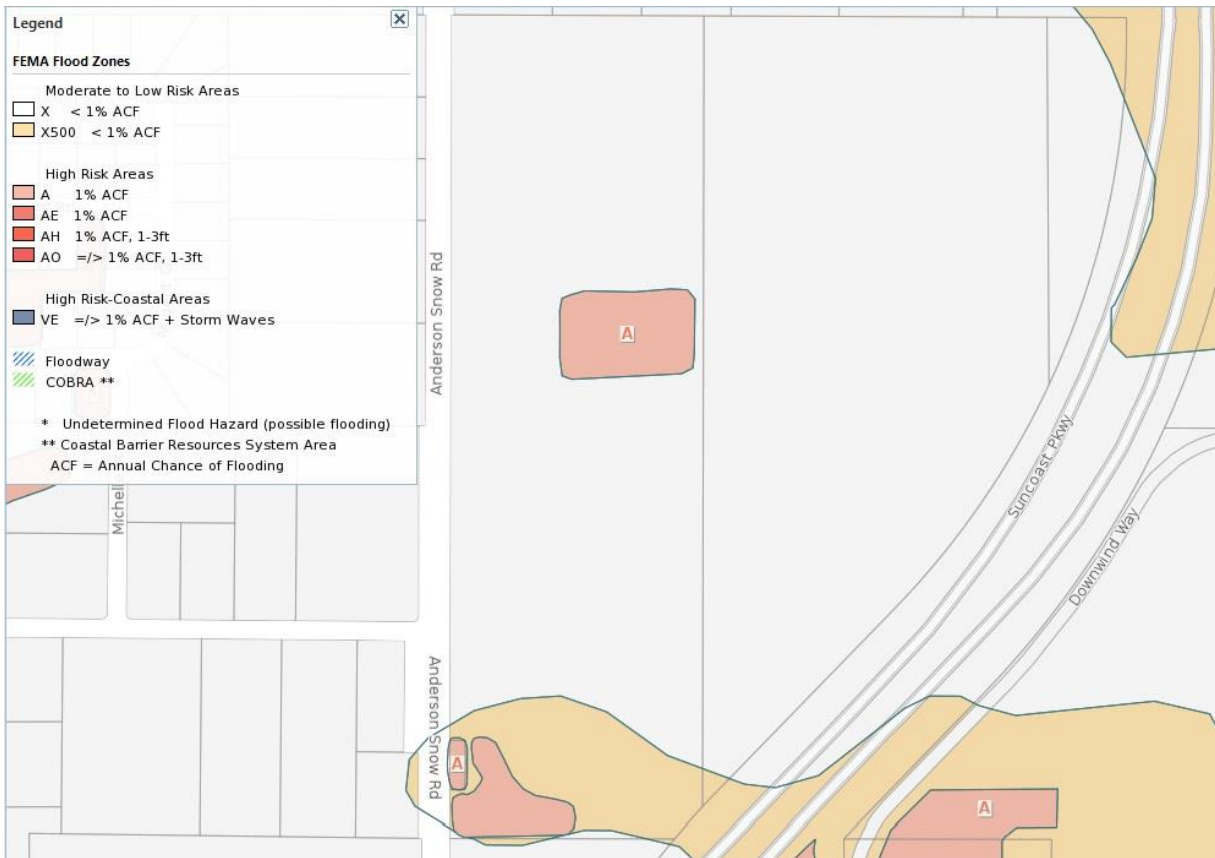


Figure 19: Anderson Snow Park's FEMA Flood Zones - Source: Property Shark, 2020

The soccer and baseball fields are graded to prevent stormwater from pooling on the fields, however, Anderson Snow's stormwater system is primarily comprised of several sizable stormwater detention areas that remain dry except for during major rain events. The stormwater detention areas currently are nothing more than shallow ditches. The two primary detention areas are located in the southwest corner of the park and south of the soccer fields.



Figure 20: Stormwater Detention Area

Underutilized Land

Adjacent to Anderson Snow Park's existing facilities is a 43-acre county-owned parcel. This parcel is currently undeveloped and is primarily used as overflow parking during large community events. Consequently, it provides Hernando County with a major opportunity to expand Anderson Snow Park into a premier regional recreational facility.



Figure 21: Anderson Snow Park's 43-acre Undeveloped Parcel

While the majority of this land is already cleared, as mentioned previously, the parcel's topography is one of its most notable features. As seen in Figure 5, the parcel is characterized by rolling hills with lower lying areas on the western, northeastern, and southeastern corners of the property.

Despite being located behind the sports complex, the park's existing entrance provides easy access to the second parcel without needing to retrofit the existing sports facilities.

A special consideration with any future plans for this site is that the parcel is home to several active burrows of gopher tortoises. Hernando County can coordinate with the Florida Wildlife Commission to relocate the gopher tortoises to a receiving site, however, this can be an involved and costly process.

Zoning and Future Land Use

Existing Park Site

Anderson Snow Park's existing site is zoned as a recreational Planned Development Project (PDP). PDP is a specialized zoning designation that allows for a wide variety of uses and designs including residential, commercial, industrial, recreational, and agricultural. Instead of restricting

the use or design features, PDP requires a special review process of the applicant's proposed development. In this way, PDP provides the County with greater flexibility to allow designs that may not fit neatly within the traditional zoning regulations, while maintaining a robust review of each proposal.

For all Planned Development Projects, the applicant must submit:

- A master plan that shows the site location and conditions, access points, relevant natural features, surrounding zoning and land uses, density and intensity, and setbacks; and
- A narrative outlining the proposed land uses and density levels, proposed setbacks, impact on natural features, impact on community infrastructure, and the development plan.

In short, the zoning of the existing park site is conducive for upgrading Anderson Snow Park according to the master plan efforts started by this project. Any proposed park improvements would need to go through the PDP review, but would not require a zoning change.

Undeveloped Park Site

As previously discussed, Hernando County owns a 43-acre parcel adjacent to the existing site that could be used to expand the Park's facilities. This parcel is currently zoned as Agricultural land which allows a wide variety of farming, wildlife management, horticultural, and limited residential uses.

However, while the Agricultural designation does allow for resource-oriented recreational activities, it would not allow more intensive park improvements such as additional sports fields or recreational centers. Active park uses would require a zoning change.

Future Land Use

Both the existing site and the undeveloped parcel are located within the Planned Development Future Land Use designation. Similar to the Planned Development zoning district, the Planned Development future Land Use designation serves to coordinate the planning of new developments that have a mixture of uses as determined by a master plan.

More specifically, Anderson Snow Park is located within the Airport Planned Development District (Airport PDD). According to Chapter 1 of Hernando County's Comprehensive Plan, the Airport PDD is designed to "facilitate maximum utilization" of the airport and to support the area's development as an employment center. In this way, even though the Airport PDD does not explicitly call for park uses, providing amenities that make an area more attractive to employers and employees alike is a key part of business development. Consequently, upgrading and expanding Anderson Park complies with the site's designation within the Airport PDD, as long it supports the Airport Master Plan.

Anderson Snow Park Usage

Anderson Snow Park is a highly utilized park that is home to thriving youth baseball, softball, and soccer leagues as well as adult and senior softball leagues. These leagues ensure that Anderson Snow Park is heavily used almost year-round. During Anderson’s busiest times of year (Fall and Spring), Anderson is consistently utilized at its full capacity, especially during night and weekends.

This section will provide a summary of how Anderson Snow Park is used throughout the year. This will include an overview of Anderson Snow’s organized youth and adult sport leagues as well as the special events hosted at Anderson Snow Park every year. A more detailed assessment of Anderson Snow Park’s capacity and utilization will be included in Deliverable 2 Needs Assessment.

League	Time of Year	Approximate Number of Players
Baseball		1,050
Dixie Spring Season	Feb. to June/July	550
Dixie Fall Season	Sept. to Nov.	400-425
AAU	Feb. to July	100-125
Softball		2,000
Dixie Spring Season	Feb. to June	400
Dixie Fall Season	Sept. to Nov.	200
Adult Softball	Jan. to March, April to June, Aug to Sept/Nov (3 seasons)	1,050 total (350 per season)
Senior Softball	Jan. to March, April to June, Aug to Sept/Nov (3 seasons)	350 total (100-125 per season)
Soccer		950
Recreational	Oct. to March	600
Competitive	Spring, Fall , and Winter	250
TOPSoccer		100
Total		~4,000

Figure 22: Annual Number of Players in Anderson Snow Park’s Sports Leagues

As shown in Figure 22, around 4,000 people participate in organized sports leagues based at Anderson Snow Park. While a few of these leagues also play games at Veterans Park and other facilities, most play exclusively at Anderson Snow Park. To accommodate this many players, Anderson Snow Park often has practices and leagues game running on every field seven days per week. However, Anderson Snow's utilization varies significantly throughout the year, peaking in the Spring and Fall with notably lower utilization in the Summer and Winter especially.

During peak periods, Anderson Snow's ball fields are utilized at full capacity every night weekend. In fact, for many of the leagues to continue to expand they would need additional fields to accommodate more players. The following will provide an overview of each of the leagues that use Anderson Snow Park.

Baseball

Anderson Snow Park is home to the Spring Hill Dixie Baseball leagues. Founded in 1992 Dixie Baseball has grown into Spring Hill's premier recreational league offering competitive baseball for children from ages 4 through 16. Dixie Baseball is renowned for its high-level of play as their teams often win district and state championships and have even won at the national level. This success attracts players from all across Hernando County.

With two primary seasons, Dixie Baseball, typically attracts around 950 players every year. The larger and more competitive Spring season runs from February to May with the playoffs often extending into June or even July. To accommodate 600 players and 33-37 teams during the Spring, Dixie Baseball plays games six days a week including a full day of games from 9:00am to 4:00pm on Saturdays. During the Spring playoffs, Anderson will often host district and state tournaments, during which teams from all over the region and the state come to Anderson Snow to play several games over a weekend.

With around 400 to 425 kids, the Fall season starts in September and finishes up before Thanksgiving. The Fall season follows a similar schedule, but it does not include district and state playoffs as it acts as a tune-up season for the Spring.

Finally, in addition to Spring Hill Dixie Baseball, Anderson Snow Parks hosts AAU traveling baseball teams as well. Typically with about 100 to 125 players, the AAU teams often reserve all of the remaining field availability not utilized by Dixie Baseball, especially on Sundays. This means that Anderson Snow's baseball fields are used 7 days a week during the Spring and Summer months.

Softball

Dixie Softball

Spring Hill Dixie Softball's schedule generally mirrors the baseball schedule. With two seasons (Spring and Fall), Dixie Softball provides high-quality competitive softball to over 600 girls every year. Like Baseball, the Spring season is larger than the Fall season with around 400 girls in the Spring compared to 200 to 225 in the Fall.

Since fields 7 and 8 are Anderson Snow's primary dedicated softball fields, Dixie Softball has to schedule 400 players on two fields every Spring. This typically requires playing two games on each field every night of the week with additional games on Saturday. Consequently, during the seasons, the softball fields are booked from 5:30pm until at least 9:30pm every night of the week and all day on Saturday. The lack of softball fields also limits Anderson Snow's ability to host larger state-level tournaments. Yet, Anderson Snow does often host district softball tournaments in the Spring.

Adult and Senior Softball

In addition to Dixie Softball, Anderson Snow Park hosts a range of adult and senior softball leagues that provide competitive softball opportunities for all ages. With players ages 18-55, Anderson Snow's adult softball league has three seasons that often run concurrently to the Dixie Softball League. The three seasons generally run from January to March, April to June, and August to October respectively. League games are often held on weekday evenings between 7:00 and 10:30pm. Each season typically has around 350 players meaning over 1,000 adult softball players participate every year. Since Anderson Snow's fields are already heavily utilized by Dixie Baseball and Softball, the adult softball leagues often splits games between Anderson Snow Park and Veterans Park.

Hernando County has three senior softball leagues made up of players ages 55 and up. Like the adult softball league, senior leagues have three seasons per year. One of these leagues plays games on fields 2 and 3 at Anderson Snow Park. Fields 2 and 3 technically are baseball fields, but since the softball fields (fields 4, 7, and 8) are often booked by the Dixie and adult softball leagues, the senior league often uses baseball fields instead.

Soccer

First Hernando County Youth Soccer Club organizes two soccer leagues at Anderson Snow Park. The Recreational Soccer Program starts in October and runs through March. Typically with about 600 kids participating, the recreational league is the larger of the two leagues. During the

recreational season the fields have practices and games on Anderson Snow’s fields from 5:30 to 9:30pm as well as games on Saturday from 9:00am until 4:00pm.

First Hernando’s competitive travel teams typically play year-round except for June and July. The competitive teams practice at Anderson Snow Park, but they often travel all across the region and the state to play tournaments. Anderson Snow Park hosts tournaments during the recreational league off-season. In particular, Anderson Snow typically hosts the Region Cup in March, during which 30 to 40 teams from around the region will come to Anderson Snow Park. First Hernando is hoping to progressively host more soccer tournaments, however many of the larger tournaments require more field capacity than Anderson Snow Park currently has.



Figure 23: First Hernando Soccer Club

First Hernando also offers TOPSoccer for youth players between the ages for 4 and 19 for youth who have a disability. TOPSoccer’s mission is “to enable the many young athletes in and around Hernando county with disabilities to develop their physical fitness, technical skills, courage and self-esteem, through the joy and excitement of playing soccer” (First Hernando Soccer Club, 2020). Achieving this mission, TOPSoccer typically has about 100 players participating

Special Events

The sports leagues are not the only organized programming held at Anderson Snow Park. Throughout the year, Anderson Park also hosts many of the Hernando County’s largest community events. For example within the past year or two Anderson Snow has held:

- Red, White, and Brew Fest,
- Hispanic Heritage Festival,
- Market Day,
- Hop n’ Glow,
- The Great Florida BBQ Festival,
- and the Food Truck Fiesta

These events range in size from 2,000 to over 10,000 people. Typically events that are larger than 2,000 people will max out the existing parking lot and will require the use of overflow parking on the 43-acre additional parcel.

Key Considerations

Based on the results of the parks conditions report, the FSU Research Team identified a set of key considerations that will need to be addressed as the master planning process progresses.

Physical Constraints

- **Topography:** Anderson Snow Park is not located on perfectly flat land. The underutilized 43-acre parcel in particular is characterized by rolling hills. The master plan will require designs that work with instead of against the land's natural features.
- **Lack of Access:** Anderson Snow Park is primarily accessible by personal vehicle. The Park is not currently accessible by bus, and the surrounding areas lacks a bicycle and pedestrian network to provide access for those who do not own a car.
- **Layout of Existing Facilities:** Anderson Snow Park has a great foundation of sports fields, but many of the park's supporting facilities are not well designed. For example, the concession stand is not well lit and faces away from the baseball field. The master plan will need to address existing deficiencies in addition to recommending new features.

Administrative Constraints

- **Rezoning Adjacent Parcel:** The underutilized parcel will require a zoning change from the agricultural designation to allow for more intensive park uses such as sports facilities.
- **Gopher Tortoises:** Anderson Snow is home to numerous gopher tortoises. Careful relocation of the endangered animals to a designated receiving site will be required.
- **Stormwater Management:** While most of the park is not within the FEMA flood plains, the park's topography will make stormwater management a key consideration of, although not a major hindrance to, larger scale park upgrades.

Conclusions and Next Steps

As the first step in the Anderson Snow Park Master Planning process, the FSU Research Team conducted an assessment of the park's existing conditions. Throughout the community engagement process residents agreed that Anderson Snow provided some of the best sports facilities in Hernando County. The park's convenient location, well-maintained fields, and competitive sports leagues kept residents coming back to Anderson Snow.

However, numerous residents also acknowledged that Anderson Snow's facilities paled in comparison to facilities in other counties. A common theme was that Anderson Snow's is a good park, but it is not yet an exceptional park. For example, Anderson Snow is home to popular sports leagues, but it is not large enough to accommodate larger tournaments. The fields and facilities are clean and well-maintained, but they are not overly attractive or aesthetically-pleasing. It has a good location, but traffic on the way to and from Anderson Snow can be problematic. Consequently, many participants identified *potential* as Anderson Snow's most prominent characteristic (see Figure 24).

Describe Anderson Snow Park in one or two words



Figure 24: Stakeholders Describing Anderson Snow Park

Anderson Snow Park's 43 underutilized acres provide an excellent opportunity to capitalize on this latent potential by developing excellent recreational facilities. The Anderson Snow Master Plan will provide a path forward to achieving the community's vision for the park. Through the improvements recommended in the Master Plan, Hernando County hopes to build on Anderson Snow's great potential to provide outstanding park and recreation facilities that serve the entire region.

Next Steps

Having conducted the first round of community engagement, the FSU Research Team is in process of synthesizing the results of the stakeholder meeting, the community open house, and the public survey. The public engagement findings will be combined with the park conditions outlined in this report to create a Park Needs Assessment Report that will be delivered to Hernando County in April, 2020.

At the same time, the FSU Research Team will be conducting a second round of community engagement to gather public input on a series of conceptual design scenarios for the future of Anderson Snow Park. Based on the feedback received during the first round of engagement, the Team will develop preliminary designs that outline potential visions for park improvements. Community members will then have opportunities to react to these designs at three separate events on March 5, 2020:

1. An Open House called Build your Own Park, held at the Spring Hill Branch Library at 10:00am.
2. A second Stakeholder Meeting, held at Family First Church at 1:00pm.
3. A Community Open House, held at Anderson Snow Park from 3:00 to 6:30pm.

The community's feedback on the preliminary designs, along with input from Hernando County staff, will form the foundation for developing a draft of the Anderson Snow Park Master Plan. The FSU Research Team will then revise the Master Plan based on planning staff and community feedback. The final Anderson Snow Master Plan will be completed by May 2020.