



**Joint Meeting of the
CITIZENS ADVISORY COMMITTEE (CAC) and
BICYCLE/PEDESTRIAN ADVISORY COMMITTEE (BPAC)
OF THE HERNANDO/CITRUS METROPOLITAN
PLANNING ORGANIZATION (MPO)**

REGULAR MEETING

Wednesday, July 26, 2023, at 10:30 a.m.

MEETING LOCATION: Hernando County Building Training Facility, 1661 Blaise Drive, Brooksville, Florida

AGENDA

A. CALL TO ORDER

1. Moment of Silence
2. Pledge of Allegiance
3. Introductions of Committee Members and MPO Staff
4. Declaration of Quorum
5. Affidavit of Publication Entered into Record

B. APPROVAL/MODIFICATION OF AGENDA (Limited to Board and Staff)

C. REVIEW/APPROVAL OF THE CITIZEN ADVISORY COMMITTEE (CAC) MINUTES – MAY 24, 2023

D. REVIEW/APPROVAL OF THE BICYCLE/PEDESTRIAN COMMITTEE (BPAC) MINUTES - MAY 24, 2023

E. REVIEW OF APPORTIONMENT PLANNING PROCESS

F. PRESENTATION ON THE PROJECT STATUS OF THE VULNERABILITY AND RISK ASSESSMENT (RESILIENCE STUDY) FOR TRANSPORTATION INFRASTRUCTURE

G. WORK FOR SEGMENT TRAFFIC STUDIES IN CITRUS COUNTY (US 41 AND SR 200) AND HERNANDO COUNTY (COUNTY LINE ROAD AND US 41)

H. CITIZEN COMMENTS

I. COMMITTEE MEMBER COMMENTS

J. MPO STAFF COMMENTS

K. ADJOURNMENT AND NEXT MEETING - The next joint meeting of the Citizen Advisory Committee and Bicycle/Pedestrian Advisory Committee is scheduled for Wednesday, September 27, 2023, beginning at 10:30 a.m., in the Lecanto Government Building, 3600 W. Sovereign Path, Room 166, Lecanto, Florida. The meeting agenda and back-up material are available online at <http://www.hernandocitrusmpo.us>.

**REVIEW/APPROVAL OF THE CITIZEN ADVISORY COMMITTEE (CAC) MINUTES AND BICYCLE/PEDESTRIAN
ADVISORY COMMITTEE (BPAC) MINUTES – MAY 24, 2023**

Review and approve the May 24, 2023, meeting Minutes of the Citizen Advisory Committee (CAC).

Staff Recommendation: It is recommended the CAC review and approve the May 24, 2023, Minutes.

Review and approve the May 24, 2023, meeting Minutes of the Bicycle/Pedestrian Advisory Committee (BCAC).

Staff Recommendation: It is recommended the BPAC review and approve the May 24, 2023, Minutes.

Attachment: Meeting Minutes from May 24, 2023



**Joint Meeting of the
CITIZENS ADVISORY COMMITTEE (CAC) and
BICYCLE/PEDESTRIAN ADVISORY COMMITTEE (BPAC)
OF THE HERNANDO/CITRUS METROPOLITAN PLANNING
ORGANIZATION (MPO)**

Wednesday, May 24, 2023

MINUTES

The Citizens Advisory Committee (CAC) and Bicycle/Pedestrian Advisory Committee (BPAC) held a joint meeting beginning at 10:30 a.m. at the Hernando County Building Training Facility, 1661 Blaise Drive, Brooksville, Florida. The meeting was advertised in the Hernando Sun and Citrus Chronicle newspapers and the agenda was available on the Hernando/Citrus MPO website.

BPAC MEMBERS PRESENT

Jim McLean, Chair, Citrus County Citizen-at-Large
Dave Peters, Alternate, City of Brooksville
Sherry Bechtel, City of Inverness
Bailey Forbes, Hernando County Parks and Rec
Francine Nobles, Citrus County Parks and Rec
Dennis Henize, Hernando County Citizen-at-Large
Michael Dolan, Hernando County Citizen-at-Large
Sgt Lillibridge, Non-Voting Hernando County Sherriff's Office

BPAC MEMBERS ABSENT

Brian Herrmann, City of Crystal River
James Lipsey, Hernando County School District
Chuck Dixon, Citrus County School District
Dennis Reiland, Citrus County Citizen-at-Large
Deputy Fischer, Non-Voting Citrus County Sheriff's Office

CAC MEMBERS PRESENT

Ron Lawson, Chair, City of Brooksville
Beverly Howard, Vice Chair, Citrus County – Unincorporated
John Wade, Citrus County – Unincorporated
Scarlett Sharpe, Hernando County - Unincorporated
Stephen Hohman, Hernando County – Unincorporated
Karen Esty, City of Inverness
Shannon Sokolowski, Low Income and/or Minority Representative

OTHERS PRESENT

Robert Esposito, MPO Executive Director
Mary Elwin, MPO Coordinator
Joy Turner, MPO Administrative Assistant III
William Roll, Kimley-Horn, General Planning Consultant
Suzanne Monk, Non-Voting Florida Department of Transportation, District 7, Government Liaison

MEETING CALLED TO ORDER

- BPAC Chair McLean called the meeting to order at 10:33 a.m. and led the Moment of Silence.
- The Pledge of Allegiance and the introductions of the Committees and staff followed the Moment of Silence.
- A quorum for the CAC was declared.
- A quorum for the BPAC was declared and the affidavit of advertisement read into the record.

APPROVAL/MODIFICATION OF AGENDA

MPO staff requested an agenda modification to move agenda Item I, Presentation on the 2050 Long-Range Transportation Plan (LRTP) Scope A Socioeconomic Forecast, to the beginning of the agenda, as new letter C. A second agenda modification was noted to add election of the 2023 BPAC Vice Chair, as Ms. Minnie, recently resigned from the BPAC and no longer works for Hernando County Parks and Recreation.

BPAC Motion: A Motion by Mr. Dolan was made to approve the modified agenda and was seconded by Mr. Henize. The Motion passed 7-0.

CAC Motion: A Motion by Ms. Sokolowski was made to approve the modified agenda and was seconded by Ms. Sharpe. The Motion passed 7-0.

PRESENTATION ON THE 2050 LONG-RANGE TRANSPORTATION PLAN (LRTP) SCOPE A SOCIOECONOMIC FORECAST

William Roll of Kimley-Horn, General Planning Consultant, is in the process of preparing the Socioeconomic Forecast study for the 2050 Long-Range Transportation Plan (LRTP) and reviewed a PowerPoint presentation on the status of data being analyzed to-date. Mr. Hohman shared there are data sets that indicate a possible population decline due to changes in attitudes in raising families and asked how familiar Mr. Roll is with the data sets. Mr. Roll affirmed he was very familiar with the data sets.

ELECTION OF THE CITIZEN ADVISORY COMMITTEE (CAC) 2023 CHAIR AND VICE CHAIR

CAC Motion: A Motion to elect Mr. Wade as Chair for 2023 was made by Ms. Esty and seconded by Ms. Howard. The Motion passed 7-0.

CAC Motion: A Motion to elect Ms. Howard as Vice Chair for 2023 was made by Mr. McLean and seconded by Ms. Nobles. The Motion passed 7-0.

ELECTION OF THE BICYCLE/PEDESTRIAN ADVISORY COMMITTEE (BPAC) 2023 VICE CHAIR

BPAC Motion: A Motion to elect Mr. Dolan as Vice Chair for 2023 was made by Ms. Bechtel and seconded by Mr. Henize. The Motion passed 7-0.

REVIEW/APPROVAL OF THE CITIZEN ADVISORY COMMITTEE (CAC) MINUTES - DECEMBER 14, 2022

CAC Motion: A Motion to approve the Minutes was made by Mr. Hohman and seconded by Mr. Lawson. The Motion passed 7-0.

REVIEW/APPROVAL OF THE BICYCLE/PEDESTRIAN ADVISORY COMMITTEE (BPAC) MINUTES – MARCH 22, 2023

BPAC Motion: A Motion to approve the Minutes was made by Ms. Bechtel and seconded by Mr. Dolan. The Motion passed 7-0.

REVIEW AND RECOMMENDATION OF THE DRAFT FY 2024-FY 2028 TRANSPORTATION IMPROVEMENT PLAN

Chair Wade asked why electric vehicle charging stations were listed in Section 3.4, Safety Investments in the TIP, and where the charging stations would be located (Agenda Packet Page 47). Mr. Esposito mentioned the need for charging stations during an evacuation and they would likely be located at rest areas or at businesses but there is a need to add more charging stations. Chair Wade would like clarification on why school buses are listed at 100% in Table 6.4, Agenda Packet page 58. MPO staff will review and report back to the committee.

CAC Motion: A Motion was made by Ms. Howard to recommend the Hernando/Citrus MPO Board adopt the draft FY 2024-FY 2028 Transportation Improvement Program. The motion seconded by Mr. Hohman. The Motion passed 7-0.

BPAC Motion: A Motion was made by Mr. Henize to recommend the Hernando/Citrus MPO Board adopt the draft FY 2024-FY 2028 Transportation Improvement Program. The motion was seconded by Ms. Bechtel. The Motion passed 7-0.

REVIEW AND RECOMMENDATION OF THE ANNUAL DRAFT UPDATE OF THE LIST OF PRIORITY PROJECTS (LOPP)

Mr. Esposito reviewed the staff's recommendations to the List of Priority Projects (LOPP) Congestion Management draft update sharing from the adopted 2022 LOPP:

- Item 10 was moved to Item 3, SR 200 (N Carl G Rose Hwy) from US 441 to the Marion County Line.
- Item 4 was moved to Item 5 instead of Croft Avenue.
- US 41 remains Citrus County's number one project.
- Item 6, a roundabout at US 41 at Lake Lindsey, was added per Florida Department of Transportation (FDOT) recommendation due to the number of serious accidents at that location.
- Ms. Elwin shared that the Technical Advisory Committee (TAC), during their earlier 9:00 a.m. meeting, recommended Item 8 be switched with Item 10.
- Item 13, a roundabout at US 41 and North Citrus Springs Boulevard, was added which will move Items 13-16 down one position and we would have a total of 17 items on the LOPP.

Ms. Esty asked for clarification whether the proposed Item 7 (previously Item 13), Cardinal Street, had not been funded. Mr. Esposito affirmed it was not funded and Citrus County's number one project is US 41. Ms. Esty addressed her concern on the need to escalate the priority for Item 10 on the Transportation Alternative (TA) LOPP, N. Independence Highway sidewalks. At present, all TA LOPP funds are being directed to Item 1, Withlacoochee State Trail, said Mr. Esposito. Ms. Monk, FDOT District 7, noted that an application for N. Independence Highway sidewalks had not been submitted. Mr. Hohman asked who files for the application and it was affirmed Citrus County files the application. Ms. Monk shared that once an application is funded, there still is a potential two-year design period, two-year right-of-way review period, and a two-year construction period; potentially a five-year wait even if the item moved up on the TA LOPP and funds became available. Chair Wade noted the Independence Highway area was growing rapidly and there are several houses being built. The committees also affirmed that if the current Item 2, Rock Crusher Road, was a Safe-Routes-to-School (SRTS) need, they would not want to postpone that Item 2 by moving Independence Highway up on the TA LOPP. An application for Rock Crusher Road has not been submitted and it was suggested to apply for SRTS funding which would remove this item from the TA funded LOPP thus allowing Independence Highway to move to a higher priority item on the TA LOPP.

There was committee discussion on if an alignment between TA LOPP Item 2 (with a recommendation to move to Item 10) and the CM LOPP Item 14 (with recommendation to move to Item 15) was feasible and could be done at the same time. Chair Wade asked if it was a standard practice to build a sidewalk at the same time a road is built, and it was affirmed that it was not unless it is a State Road per Mr. Esposito

Chair McLean asked that two shelter/restroom amenities be added for the Sun Coast Parkway Trail; one at Cardinal Boulevard (36a) and one at SR44 (36b). Chair McLean also mentioned there were plans to establish a Park and Ride creating a greater need for facilities at SR44. Ms. Nobles agreed and shared there were 28 miles of trail that had no storm shelter, water, or shade. The committees discussed their concerns and possible solutions to not having signage or information available on tourism/trail web sites advising visitors of no amenities. MPO staff will also investigate solutions for signage and posting on appropriate web sites and report back to the committees.

Chair McLean commented on his concern that a Bicycle/Pedestrian overpass was not being built over SR 44. Mr. Hohman agreed and indicated it would be less expensive to build an overpass during the Sun Coast Parkway construction phase versus having to retrofit at a point in the future due to the potential of serious injury/fatality incidents.

CAC Motion: A Motion from the Citizens Advisory Committee (CAC) to recommend the Hernando/Citrus MPO Board approve the annual draft update of the List of Priority Projects (LOPP), with noted changes, was made by Ms. Howard and seconded by Mr. Hohman. The Motion passed 7-0.

BPAC Motion: A Motion from the Bicycle/Pedestrian Advisory Committee (BPAC) to recommend the Hernando/Citrus MPO Board approve the annual draft update of the List of Priority Projects (LOPP), with noted changes, was made by Ms. Bechtel and seconded by Messrs. Dolan and Henize. The Motion passed 7-0.

REVIEW AND RECOMMENDATION OF THE FY 2024 DRAFT ANNUAL UPDATE OF THE UNIFIED PLANNING WORK PROGRAM (UPWP)

Chair Wade voiced his concern on locating information on the Hernando/Citrus MPO web site. Mr. Esposito reassured that the MPO is public driven and public notice is important to the MPO and that he would schedule a meeting with the Hernando County IT team next Tuesday, May 30, 2023, to investigate options to improve the web site and ensure information is current. Chair Wade indicated the agenda packet red-lined version of the UPWP was not reflecting table updates correctly and Ms. Elwin assured him the data contained in the original UPWP document is correct and the Adobe software skewed the tables when the document converted it to Adobe format in the agenda packet. Ms. Elwin offered to print corrected copies of the UPWP, and the committees passed. Chair Wade asked for clarification on why Personal Salary decreased. Mr. Esposito indicated the MPO will have a staff reduction.

CAC Motion: A Motion was made by Ms. Sokolowski and seconded by Ms. Sharpe. to recommend the Hernando/Citrus MPO Board approve the FY 2024 draft annual update of the Unified Planning Work Program (UPWP), with table values shown correctly, The Motion passed 7-0.

BPAC Motion: A Motion was made by Mr. Henize and seconded by Ms. Forbes to recommend the Hernando/Citrus MPO Board approve the FY 2024 draft annual update of the Unified Planning Work Program (UPWP), with table values shown correctly, The Motion passed 7-0.

CITIZEN COMMENTS – There were no citizens present.

COMMITTEE COMMENTS

- Chair McLean shared a Bicycle/Pedestrian pamphlet that was provided by the Hernando/Citrus MPO's Master Plan and asked that it be reviewed and updated during the 2050 Long-Range Transportation Plan (LRTP) process.
- Ms. Nobles shared that the Withlacoochee State Trail had 479,000 visitors in 2022 and is the most used state park in the district.
- Ms. Howard mentioned the sidewalk barriers were taken down and the sidewalk now provides a safe route, especially for many of the lesser served citizens that needed a safe bicycle/pedestrian alternative to US 19. Chair Wade commended Ms. Howard on her efforts of getting projects through fruition.
- Chair McLean complimented the new rumble strip design which is more comfortable for the bicycle rider (less bumpy) and smoother on the tires.
- Ms. Howard mentioned the memorial marker that was provided by FDOT for Clayton Storey was removed during road improvements. She will forward pictures to MPO staff to investigate if this can be resurrected.

HERNANDO/CITRUS MPO STAFF COMMENTS

- Mr. Esposito expressed thanks to FDOT for the additional \$2.3 million dollars for US 41 in Citrus County and for adding in a traffic signal at Gospel Island and SR 44 during their resurfacing project. Additionally, Mr. Esposito thanked FDOT for paying for the study (approx. \$100,000) for the rectangular rapid flashing beacons for the Withlacoochee State Trail in Inverness and the new roundabout at US 41 and Lake Lindsey Road. Towards the end of June, a solution on the Brooksville one-way pairs may come to fruition.

ADJORNMENT AND NEXT MEETING

Chair Wade adjourned the meeting at 12:49 p.m. The next joint meeting of the Citizen Advisory Committee (CAC) and Bicycle/Pedestrian Advisory Committee (BPAC) is tentatively scheduled for Wednesday, June 21, 2023, beginning at 10:30 a.m., in the Lecanto Government Building, 3600 W. Sovereign Path, Room 166, Lecanto, Florida.

[Subsequent to this meeting, the June 21, 2023, meeting was cancelled. The next meeting is scheduled for July 26, 2023.]

REVIEW OF APPORTIONMENT PLANNING PROCESS

On May 16, 2023, the Florida Department of Transportation (FDOT) notified the Metropolitan Planning Organizations in the State of the beginning of the decennial Apportionment Plan and Urban Boundary/Functional Classification process. Federal law enables State and local governments to determine the composition of an MPO/TPO pursuant to 23 USC 134(d) and 23 CFR 450.310. The Governor officially apportions the membership of the MPO in agreement with affected local governments pursuant to Florida Statute 339.175(4)(a).

The Apportionment Plans are prepared based upon the decennial (2020) census and are required at a minimum to include the following:

- 2010 and 2020 Census population in the MPO planning area,
- a profile of the MPO
- the current membership (local governments and agencies)
- proposed membership (local governments and agencies)
- the methodology used to determine the proposed changes if there are proposed changes,
- a planning area boundary map
- a resolution by the MPO Board for the adoption of the Apportionment Plan

MPOs are required to submit an Apportionment Plan to FDOT by November 14, 2023 (within 180 days of official notice). MPO Staff is currently working with FDOT on the apportionment boundaries and mapping, and is proposing to have the Technical Advisory Committee, Citizens Advisory Committee, and the Bicycle/Pedestrian Committee review the draft Apportionment Plan on August 23, 2023, and by the MPO Board on September 7, 2023. Once any necessary adjustments are made, the Final Apportionment Plan will be scheduled for all three committees to review at their September 27, 2023, meetings and final MPO Board approval at its meeting on October 5, 2023. Once adopted, the Plan will be transmitted to the Florida Department of Transportation to comply with the November 14, 2023, deadline.

Once the plan is submitted, FDOT has 30 days for review. The Plan is submitted to the Governor’s Office by January 15, 2024. The Governor’s approval of the Apportionment Plan constitutes the official designation of the MPO.

Attached is the FDOT’s Apportionment Plan Guidance that was provided to the MPO. Based upon a preliminary review of the data provided by the Florida Department of Transportation, it is not anticipated that the Apportionment Plan will contain substantial changes to the Hernando/Citrus MPO, but Staff will keep the Board apprised while moving through the coordination process with the FDOT.

Staff Recommendation: It is recommended the CAC review the presentation which is being provided for informational purposes only. No action is required at this time.

Staff Recommendation: It is recommended the BPAC review the presentation which is being provided for informational purposes only. No action is required at this time.

Attachment: Apportionment PowerPoint Overview, FDOT Apportionment Plan Guide, MPO Current Apportionment Plan-2014

Apportionment Plan Process 2023

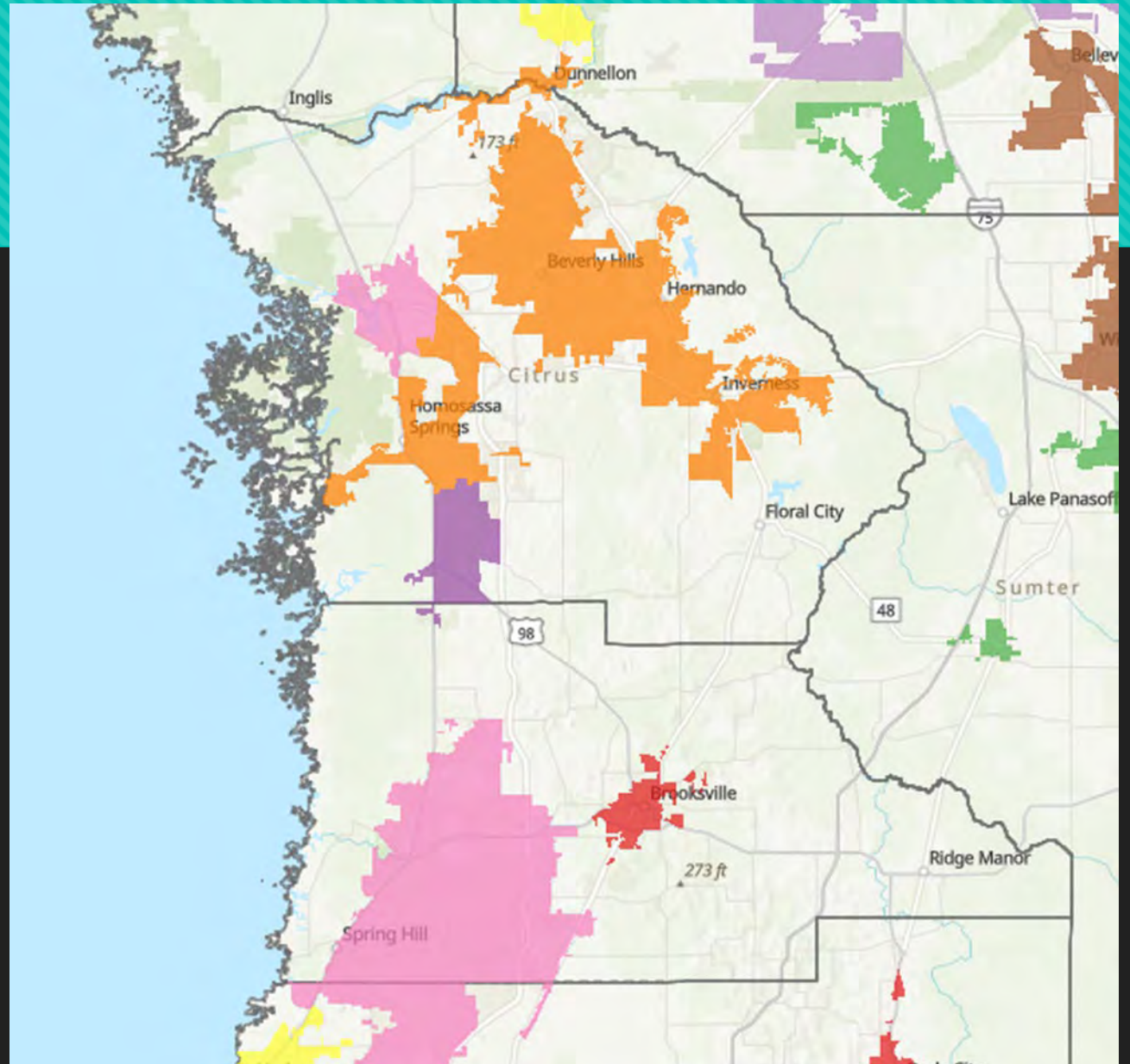
Hernando/Citrus MPO

Overview of Apportionment Process

Process Schedule

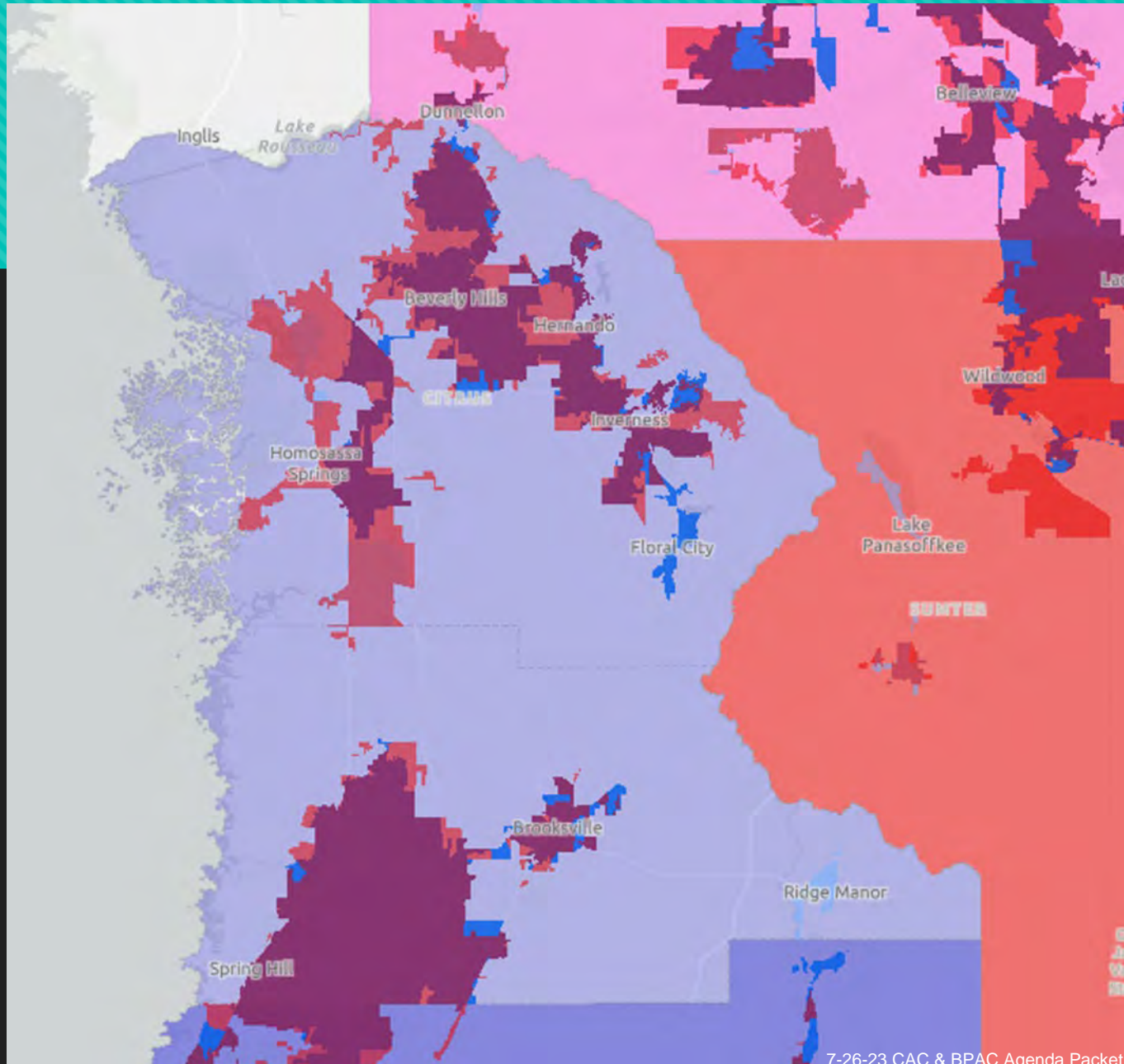


2020 Census Data Map of Urbanized Areas in Hernando and Citrus Counties



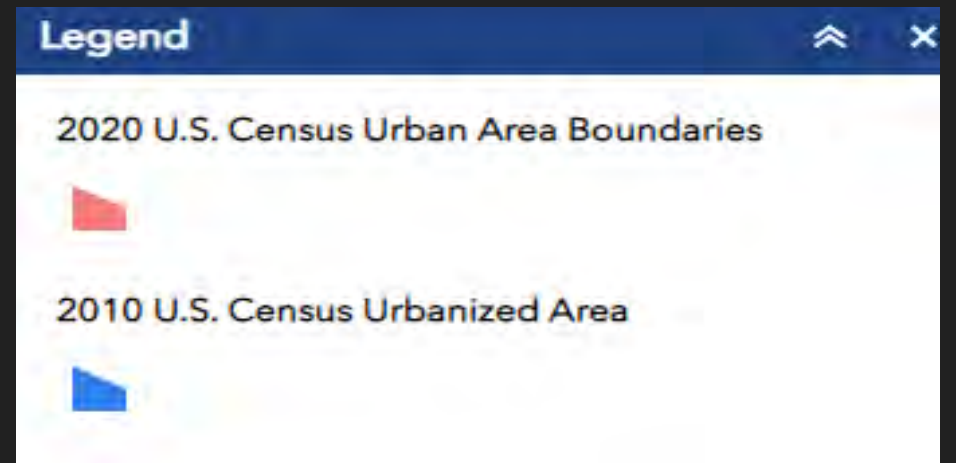
Changes in Federal Urban Methodology

- Since 1910, Population of Urban Clusters Defined as 2,500-49,999 People
- New Criteria for Urbanized Areas:
 - 5,000 People and Above, or
 - 2,000 New Houses
 - Use of Housing Density (425 per Sq Mile for Core, 200 per Sq Mile to Expand). Comparison - In 2000 and in 2010, the Density was 1,000 persons per square mile.
 - MPOs are Still Based on a Population of 50,000 and Above



Comparing 2010 to 2020 Urbanized Areas for Citrus and Hernando Counties

Map Source: FDOT



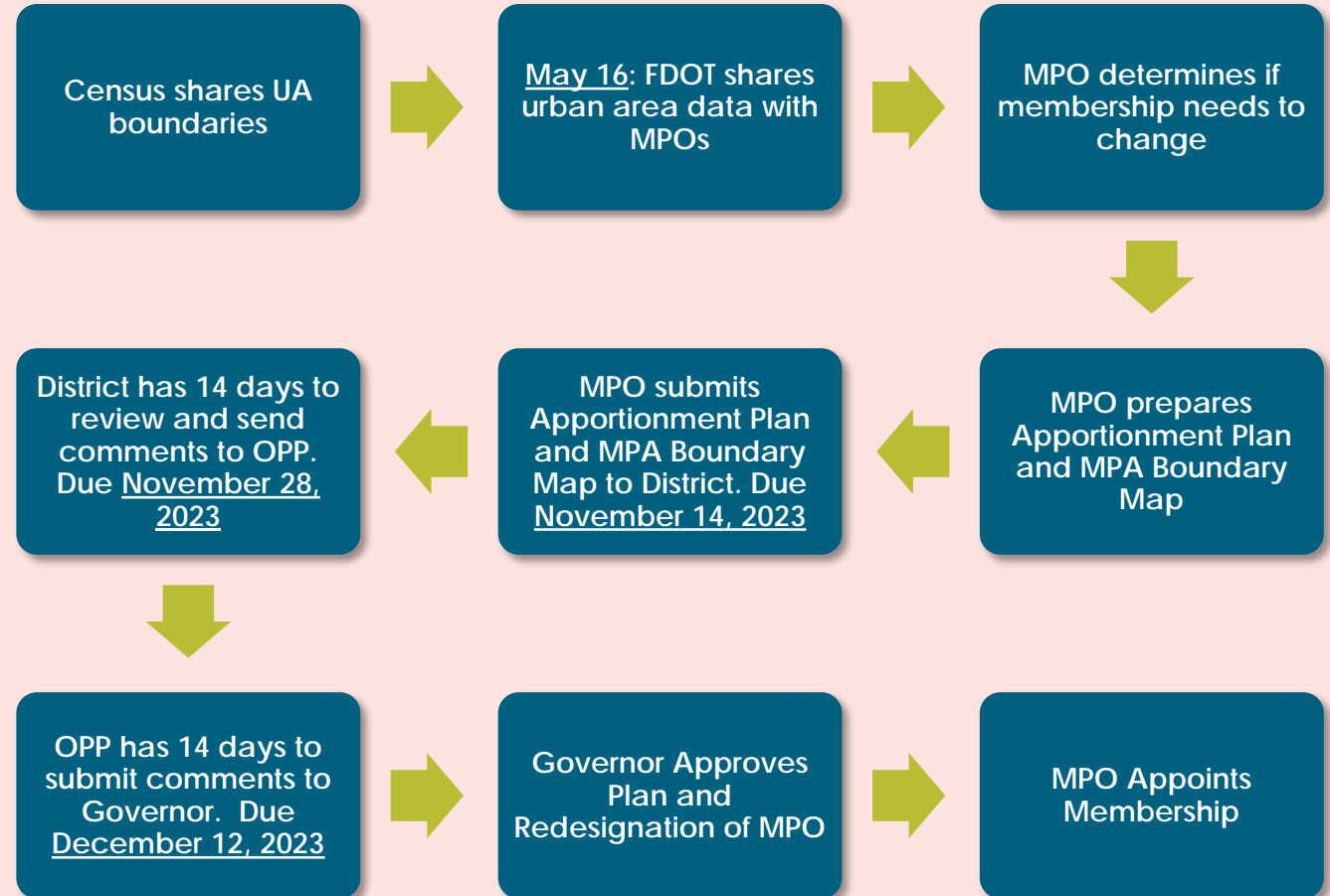
Reasons for Methodology Changes

- Hops and Jumps Occur Between Population Areas
 - Hops are still 0.5 Miles
 - Jumps reduced from 2.5 miles to 1.5 miles
- Housing density is not population density

- Remember Census was April 1, 2020
 - COVID-19 was just starting
 - Significant increase in growth occurred after the Census

Apportionment Plan/MPA Boundary Maps Schedule

Plan includes proposed membership, boundary map, and resolutions of support from each affected local government



In Progress for Hernando-Citrus MPO

- November 14, 2023, Federal Deadline – Apportionment Plan Must Contain:
 - A Boundary Map with Smoothed Lines per Requirement (Currently Urban Census Areas are Jagged) – *Map In Progress*
 - Based on Census Blocks, not Miles
 - Show Features that are Easily Identifiable “In the Field”
 - A Planning Area Map (Currently the Counties of Citrus and Hernando) – No Recommended Changes
- Membership Composition – No Recommended Changes
 - Board Composition
 - Resolution Adoption
- Update Functional Classification Map – In Process
 - Identify Arterials, Collectors and Local Roads

Apportionment Plan Guidance

Office of Policy Planning
June 6, 2023



Office of Policy Planning

Contents

- Introduction 2
- Apportionment Plan Schedule 3
- Types of Changes to MPO Membership or Boundaries 4
- Apportionment Plan Contents 8
- Metropolitan Planning Area Boundary Map 9
- Multiple MPOs in One Urban Area 9
- Federal and State Requirements for MPO Membership 10
- Resources 11



Introduction

After each decennial census, metropolitan planning organizations (MPOs) must review the composition of their membership and metropolitan planning area (MPA) boundaries and submit an Apportionment Plan that meets the requirements of [s.339.175\(3\), FS](#), [s.339.175\(4\), FS](#), and [23 CFR 450.310](#). Apportionment Plans must include the following:

- 2010 and 2020 Census population in the MPO area
- Current MPO membership (local governments and agencies)
- Proposed MPO membership (local governments and agencies)
- The methodology used to determine the proposed changes if there are proposed changes
- MPA boundary map
- MPO Board resolution adopting the Apportionment Plan

The Florida Department of Transportation's (FDOT) Transportation Data and Analytics (TDA) Office prepared the 2020 US Census urban area population data by county for the MPOs to aid in preparing Apportionment Plans. Look for the 2020 Census by County button on the [Urban Area Boundary and Functional Classification Data Hub](#).

FDOT's Office of Policy Planning (OPP) also prepared an Apportionment Plan template that accompanies this guidance. The template includes recommended language, tables, and a sample MPO Board resolution.

This guidance describes the following:

- Apportionment Plan Schedule
- Types of Changes to Membership and Boundaries
- Apportionment Plan Contents
- MPA Boundary Maps
- Options for When an Urban Area Crosses into Multiple MPOs
- Federal and State Requirements for MPO Membership



Figure 1. 2020 Census by County button on the Urban Area and Functional Classification Data Hub

Apportionment Plan Schedule

The Apportionment Plan process began on **May 16, 2023**. Therefore, MPOs have 180 days from **May 16, 2023**, to submit their Apportionment Plans to FDOT's Office of Policy Planning MPO Statewide Coordinator and District Planning Manager or designee ([MPO Program Management Handbook, sections 2.5 and 2.10](#)). Based on this requirement, all MPOs must submit their Apportionment Plans **by November 14, 2023**.

FDOT has 30 days to review the plans, then 30 days to provide a recommendation to the Governor's Office. The Governor's approval of the Apportionment Plan constitutes the official designation of the MPO. If there are substantial changes to the MPO, the MPO and member local governments will need to amend or execute a new Interlocal Agreement and Interstate Compact (if applicable) following designation by the Governor.



Figure 2. Apportionment Plan Schedule

Types of Changes to MPO Membership or Boundaries

The MPO may change its voting membership or boundaries based on results of the 2020 Census. Changes can be categorized as follows:

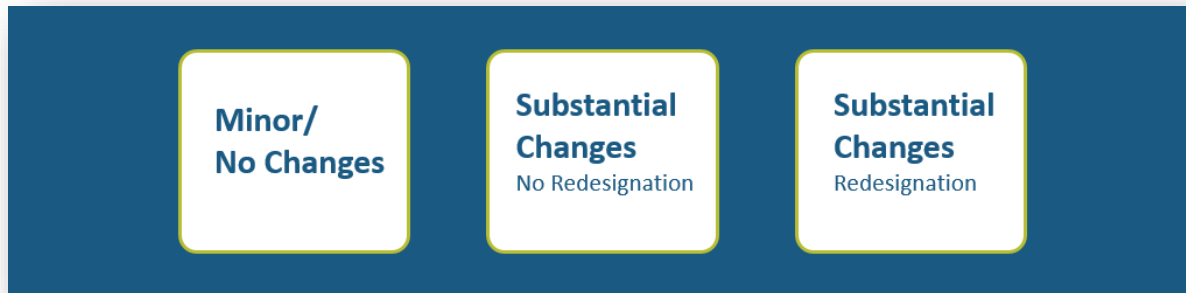


Figure 2. Categories of Changes to the MPO

Anything that does not rise to a substantial change is considered minor. The following scenarios are considered substantial changes:

- Substantial changes that do not require redesignation include:
 - Expanding into a new county/state/city
 - Expanding to add a new urban area with over 50,000 people
- Substantial changes that require redesignation¹ include:
 - A major change in voting membership
 - A major change in the decision-making authority or responsibility of the MPO

The following changes to an MPO do not require a redesignation if the changes do not trigger a substantial change as described in [23 CFR 450.310\(j\)](#):

- Adding a new urban area within the existing MPA
- Adding members to the MPO that represent new local governments resulting from expanding the MPA
- Adding members to satisfy TMA membership requirements described in [23 CFR 450.310\(d\)](#)
- The periodic rotation of members representing local governments as established under MPO bylaws [\[23 CFR 450.310\(l\)\]](#)

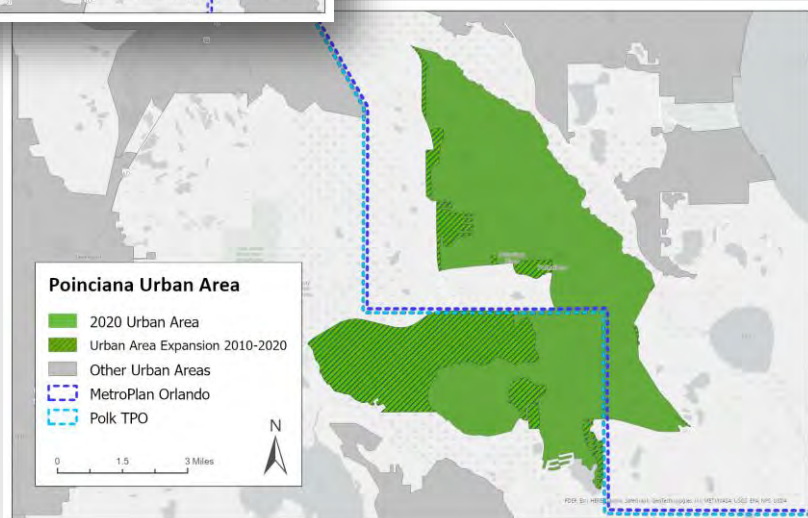
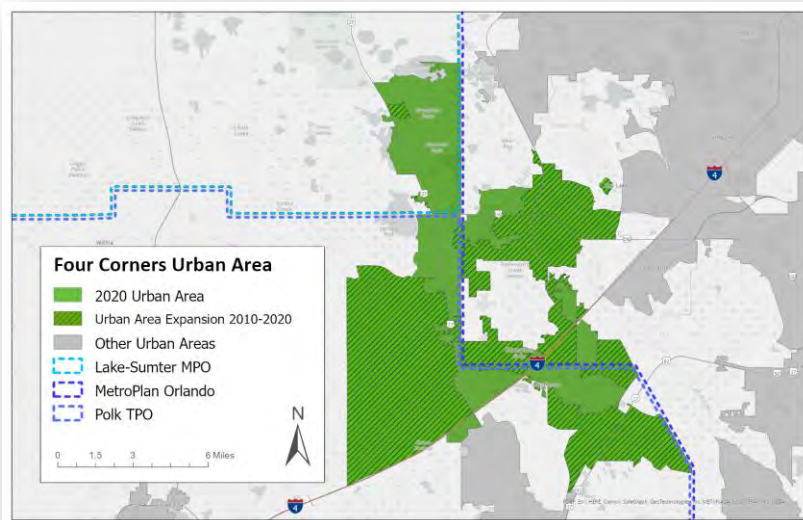
¹ [\[23 CFR 450.310\(j\)\]](#)

Minor/No Changes Example

Background: A multi-county MPO has two new urban areas with over 50,000 in population that were previously urban clusters. These urban areas extend into other MPOs. One urban area is in three MPOs and four counties. The other urban area is in two MPOs and two counties.

Potential Approaches: The MPO may adjust its boundaries to include all of the urban areas or choose to establish how the MPOs will coordinate planning efforts and identify transportation planning responsibilities. This topic is discussed in detail in the Multiple MPOs in One Urban Area section.

Potential Outcomes: The MPO may determine that the current voting structure is equitable based on the geographic distribution of the population or that slight adjustments in the voting structure are necessary. Therefore, this example would fall within the category of minor changes.

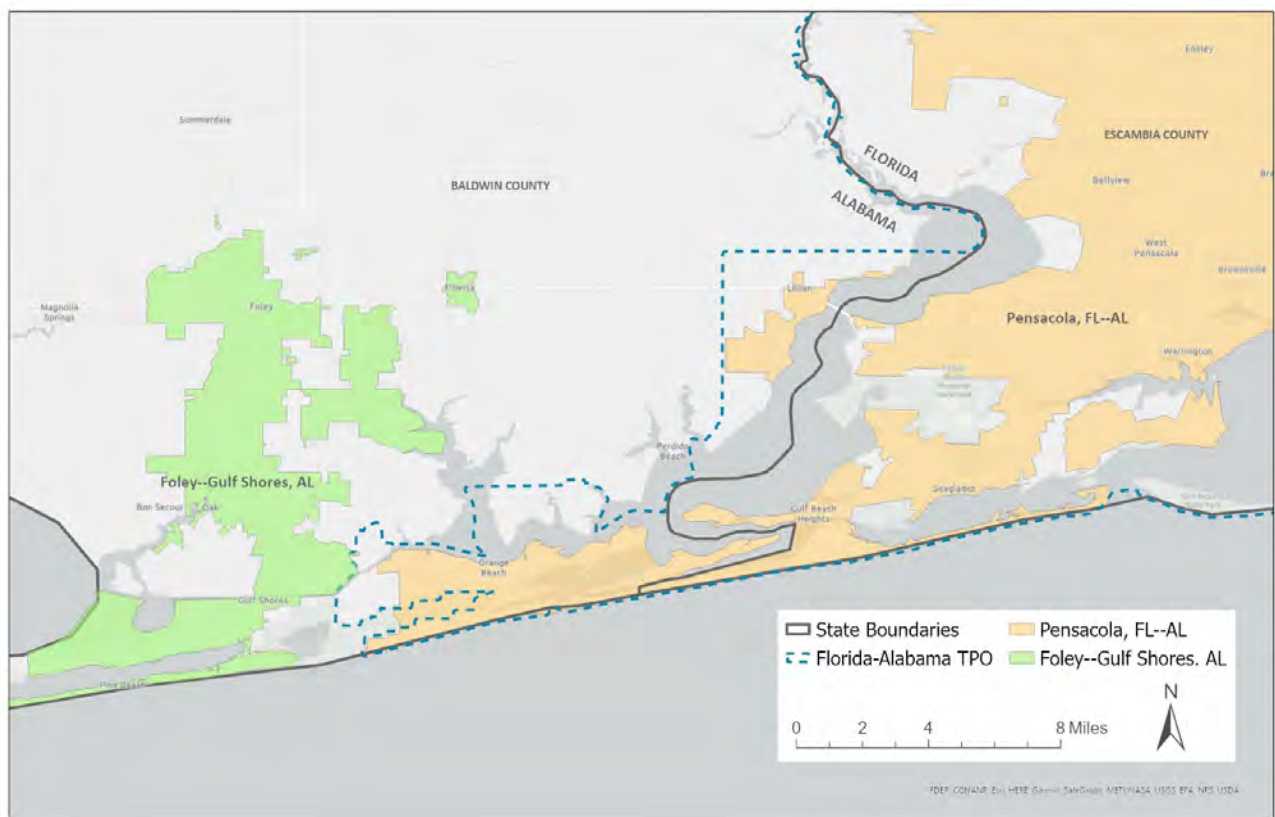


Substantial Change No Redesignation Example

Background: There are two adjacent urban areas. One urban area is within the MPO, and the other urban area is not within the MPO.

Potential Approaches: The MPO may expand its boundaries to encompass a new urban area.

Potential Outcomes: The MPO would encompass new cities and may determine that slight adjustments in the voting structure are necessary. The MPO must amend its agreements to reflect changes to membership. Therefore, this example would fall within the category of substantial changes, but no redesignation. This example would also require updating the Interstate Compact since the additional membership changes are across state lines.



Substantial Change Redesignation Example

Background: Three MPOs serve one urban area with a population greater than 200,000 people.

Potential Approaches: The MPOs may coordinate planning efforts and responsibilities or choose to consolidate into a single MPO.

Potential Outcomes: Consolidating multiple existing MPOs into a single MPO is an example of a substantial change to the proportion of voting members and the responsibility of the MPO, which would require redesignation. An MPO is redesignated by agreement between the Governor and local governments that together represent at least 75% of the existing planning area population, including the largest incorporated city based on population as named by the Census. The designation of an MPO shall remain in effect until the MPO is redesignated. [[23 USC 134\(d\)\(5\)](#)]

Apportionment Plan Contents

Apportionment Plans must include the following information:

- 2010 and 2020 Census population in the MPO area
- Current MPO membership (local governments and agencies)
- Proposed MPO membership (local governments and agencies)
- The methodology used to determine the proposed changes if there are proposed changes
- MPA boundary map
- MPO Board resolution adopting the Apportionment Plan

If there are substantial changes to the MPO membership and MPA boundaries, the MPO must update the following agreements to be consistent with the Apportionment Plan after the Governor approves the plan.

- Interlocal Agreement for the Creation of the MPO
- Interstate Compact (only applies to the FL-AL TPO)

If the substantial changes require redesignation, the MPO must prepare the following agreements after the Governor approves the Apportionment Plan.

- Interlocal Agreement for the Creation of the MPO
- Intergovernmental Coordination and Review and Public Transportation Collaborative Planning Agreement (ICAR)
- MPO Agreement (with UPWP)
- Interstate Compact (only applies to the FL-AL TPO)



Figure 3. Requirements for Apportionment Plans

Metropolitan Planning Area Boundary Map

The Federal requirements for establishing and adjusting MPA boundaries are in [23 CFR 450.312](#).

- The MPA boundaries must encompass the existing urban area plus the contiguous area expected to become urban within a 20-year forecast period.
- MPA boundaries must not overlap with each other.
- Where part of an urban area that one MPO serves extends into an adjacent MPA, the MPOs must establish written agreements that clearly identify areas of coordination and the division of transportation planning responsibilities among and between the MPOs.
- MPA boundary maps should be developed at a scale that best meets the needs of the urban area and clearly show the date of the map, scale bar, north arrow, waterways, major routes, transit, intermodal facilities, airports, and names of urban areas.

Multiple MPOs in One Urban Area

There are cases where the 2020 Census-designated urban areas cross into another MPA that previously did not cross MPA boundaries. For example, the Bradenton-Sarasota-Venice urban area now crosses into the Lee County MPO (shown on the map).

Suppose more than one MPO is designated to serve an urban area. In that case, there must be a written agreement between the MPOs, the state(s), and the public transportation operator(s) that describes how the metropolitan transportation planning processes will be coordinated to ensure the development of consistent plans across the MPA boundaries, particularly in cases in which a proposed transportation investment extends across the boundaries of more than one MPA. The planning processes must reflect coordinated data collection, analysis, and planning assumptions across MPAs. Alternatively, a single LRTP or TIP for the entire area may be developed jointly by the MPOs. Coordination efforts and outcomes must be documented in submittals of the UPWP, the LRTP, and the TIP to the state(s), the FHWA, and the FTA.

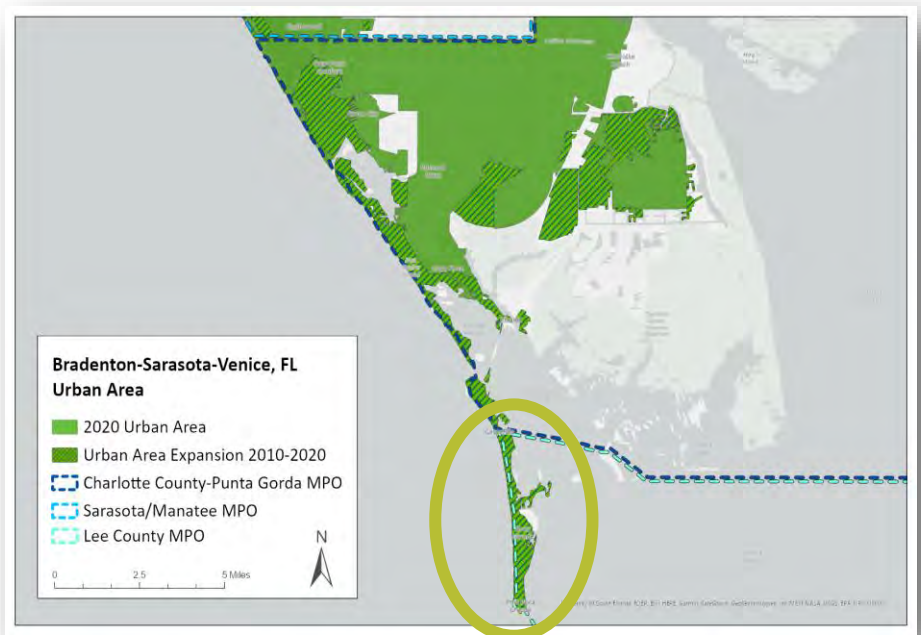


Figure 4. Example of a 2020 urban area that is in three MPOs when the urban area was previously in two MPOs.

Federal and State Requirements for MPO Membership

Designation and Representation ([23 CFR 450.310](#))

- The units of general purpose local government that comprise the MPO should represent at least 75 percent of the affected population in the planning area, including the largest incorporated city based on population
- For MPOs with a Transportation Management Area (TMA)
 - A representative of a provider of public transportation may also serve as a representative of a local municipality
 - Officials of public agencies that administer or operate major modes of transportation in the metropolitan area must have voting rights commensurate with other officials

Voting Membership ([s.339.175\(3\)\(a\)](#), [s.FS, 339.175\(3\)\(b\)](#), [FS](#), and [s.339.176, FS](#))

- Voting membership should consist of 5-25 members, the exact number determined based on an equitable geographic-population ratio basis
- Voting members must be elected officials of local governments and may also include a member of a statutorily authorized planning board, an official of an agency that operates/administers a major mode of transportation, or an official of Space Florida
- MPO members that represent municipalities may alternate with other representatives from other municipalities within the MPA that do not have members on the MPO
- County commissioners must compose one-third of the MPO governing board, except when all the county commissioners in a single county MPO are on the governing board
 - Multicounty MPOs can satisfy this requirement with any combination of county commissioners from each of the counties
- County commissioners must compose no less than 20 percent of the MPO membership if an official of an agency that operates or administers a major mode of transportation has been appointed to an MPO
- Agencies created by law to perform transportation functions that are not under the jurisdiction of a local government represented on an MPO may be given voting membership
 - When elected officials represent transportation agencies/authorities, the MPO must establish a process to convey the collective interests
- The voting membership of an MPO whose geographical boundaries include a county as defined in [s. 125.011\(1\)](#) must include an additional voting member appointed by the city's governing board for each city with a population of 50,000 or more residents

Resources

The following resources are available to MPOs to aid in preparing Apportionment Plans.

- [2020 UABFC Data Hub](#)
- [MPO Program Management Handbook](#)
- [23 CFR Part 450](#)
- [Florida Statutes 339.175](#)
- [23 USC 134](#)

MPO REDESIGNATION, PLANNING AREA BOUNDARY EXPANSION & REAPPORTIONMENT PLAN



**Reviewed and approved
by the Hernando County
Metropolitan Planning
Organization (MPO) on
December 17, 2013**

Hernando County Metropolitan Planning Organization

20 NORTH MAIN STREET, ROOM 262, BROOKSVILLE, FLORIDA 34601
Phone (352) 754-4057 Fax (352)754-4420
Email: mpo@hernandocounty.us



By a unanimous vote on December 17, 2013, the Hernando County Metropolitan Planning Organization (MPO) approved the Hernando/Citrus MPO Draft Redesignation, Planning Area Boundary Expansion and Reapportionment Plan.

The planning boundary of the Hernando/Citrus MPO shall include all of Hernando and Citrus Counties.

HERNANDO COUNTY METROPOLITAN PLANNING ORGANIZATION

A handwritten signature in blue ink, which appears to read 'Ronald F. Pianta', is positioned above a horizontal line.

Ronald F. Pianta, AICP
Assistant County Administrator/MPO Executive Director

TABLE OF CONTENTS

1. BACKGROUND1
Membership and Boundary (1992-2012).....1

**2. 2013 REDESIGNATION OF THE EXPANDED METROPOLITAN PLANNING
AREA BOUNDARY2**

3. POPULATION4

4. REAPPORTIONMENT PLAN METHODOLOGY5

5. 2013 REAPPORTIONMENT PLAN6

6. RESOLUTIONS OF SUPPORT6

APPENDIX OF RESOLUTIONS OF SUPPORT7

Metropolitan Planning Area Boundary and Reapportionment Plan

1. BACKGROUND

In September 1992, the City of Brooksville and Hernando County executed an interlocal agreement establishing the Spring Hill/Hernando County Metropolitan Planning Organization (MPO) to carry out a continuing, coordinated, and comprehensive transportation planning process. The creation of the MPO was the result of the population in the urbanized area reaching over 50,000 individuals. Subsequently, in June 1999, the MPO name was changed to the Hernando County Metropolitan Planning Organization (HCMPO). The most recent Interlocal Agreement for Creation of the Metropolitan Planning Organization between the Florida Department of Transportation, the County of Hernando, and the City of Brooksville executed an Interlocal Agreement for Creation of the Metropolitan Planning Organization was executed in June 2009 and expires in 2014.

Membership and Boundary (1992-2012)

To date, MPO membership has consisted of 6 total voting members representing Hernando County and the City of Brooksville and one non-voting member (Florida Department of Transportation) pursuant to statute. The current Metropolitan Planning Area Boundary is coterminous with Hernando County's jurisdictional boundary as shown in *Figure 1*. The approved MPO voting scenario from 1992 to 2012 is contained in *Table 1*.



Figure 1 – Hernando County MPO (HCMPO) Boundaries Approved November 2003

Table 1 – Current HCMPO Membership*

Governmental Entity	Number of Members	Vote
Hernando County	5	5
City of Brooksville	1	1
Florida Department of Transportation**	1	0
Total	7	6

* The Chair only votes in the case of a tie.

** FDOT District Seven Secretary is a nonvoting advisor

2. 2013 REDESIGNATION OF THE EXPANDED METROPOLITAN PLANNING AREA BOUNDARY

The 2010 Census established the Homosassa Springs-Beverly Hills-Citrus Springs Urbanized Area. Based upon its proximity to the existing Spring Hill Urbanized Area, the coordination of a potential merger was initiated with the HCMPO by the Citrus County transportation Planning Organization (TPO).

The first step in the expansion of the HCMPO to merge with the Homosassa Springs-Beverly Hills – Citrus Springs Urbanized Area, is to approve the expansion of the Metropolitan Planning Area Boundary (MPAB). The MPAB identifies the area from which the re-designated MPO will perform transportation planning functions, as depicted in *Figure 2*. This is allowed per Florida Statute 339.175 (2)(2)(c) which states:

“The jurisdictional boundaries of an M.P.O. shall be determined by agreement between the Governor and the applicable M.P.O. The boundaries must include at least the metropolitan planning area, which is the existing urbanized area and the contiguous area expected to become urbanized within a 20-year forecast period, and may encompass the entire metropolitan statistical area or the consolidated metropolitan statistical area.”

In this process, the existing MPO develops a reapportionment plan that involves the proposed membership, expanded Metropolitan Planning Area Boundaries (MPAB), and resolutions of support from the affected city and county jurisdictions.

**MPO REDESIGNATION, PLANNING AREA BOUNDARY EXPANSION &
REAPPORTIONMENT PLAN
December 2013**

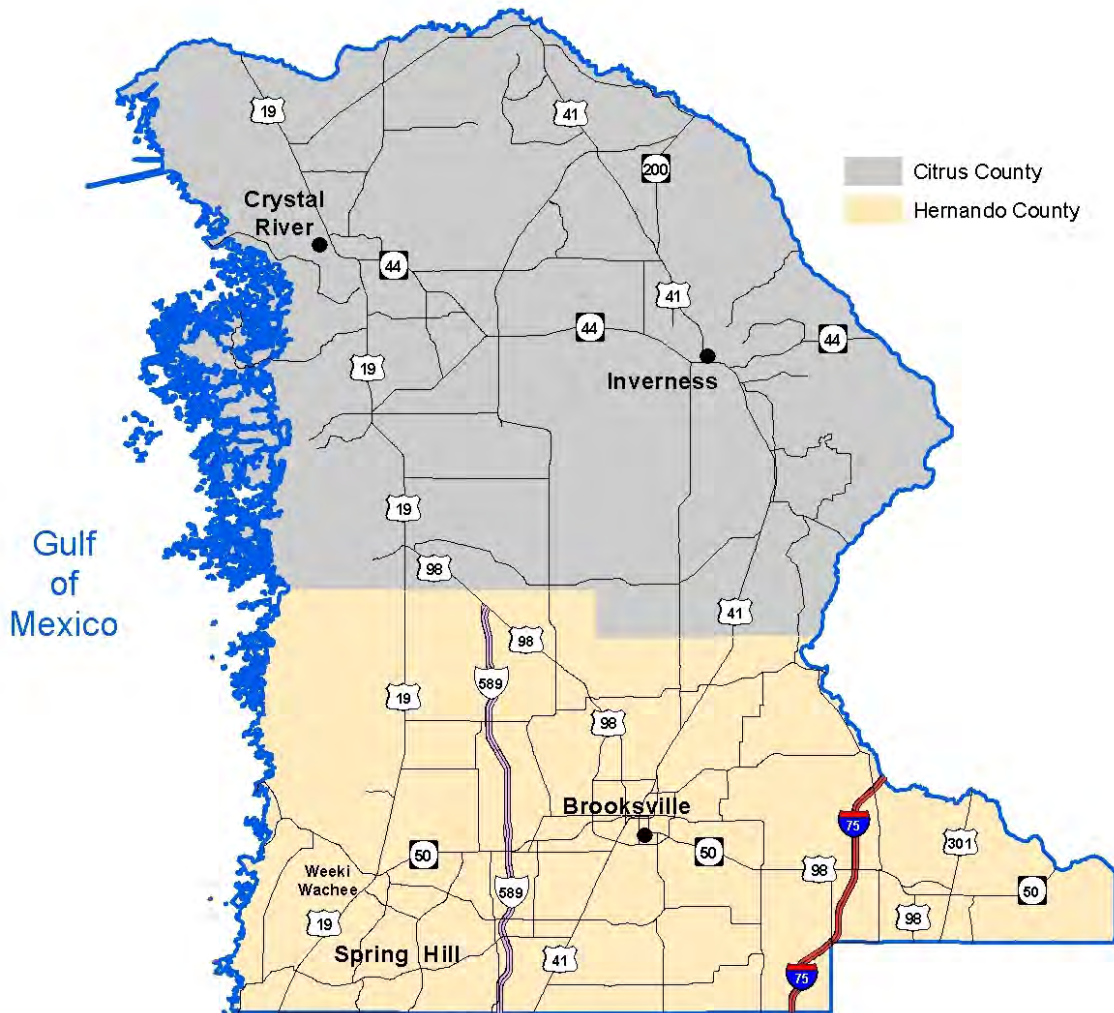


Figure 2 - Proposed MPO Planning Area Boundary

Shown in *Table 2* are the approval dates for the proposed merger from the affected transportation planning organizations.

Table 2 – Dates of Approval by Affected Transportation Planning Organizations

MPO/TPO	Date of Approval
Hernando County MPO	12/17/2013
Citrus County TPO	12/12/2013

3. POPULATION

The increase in size of the Metropolitan Planning Area Boundary (MPAB) also includes a population increase from 130,802 in 2000 to 314,014 in 2010 as shown in **Table 3**. The 1990 and 2000 columns only include the Hernando County population from the 1990 and 2000 Census. The 2010 column includes the Citrus County population from the 2010 Census.

Table 3 – Metropolitan Planning Area Boundary Population 1990 to 2010

Jurisdiction	1990	2000	2010
Hernando (Unincorporated)	93,515	123,526	165,047
City of Brooksville	7,589	7,264	7,719
Weeki Wachee	11	12	12
Citrus (Unincorporated)			130,918
City of Crystal River			3,108
City of Inverness			7,210
Total	101, 115	130,802	314,014

As amended, the 2010 populations change the percentage of participation by Hernando County from 100% to 55%. Citrus County now accounts for 45% of the proposed metropolitan planning area population. The population of the MPAB is illustrated in **Figure 3**.

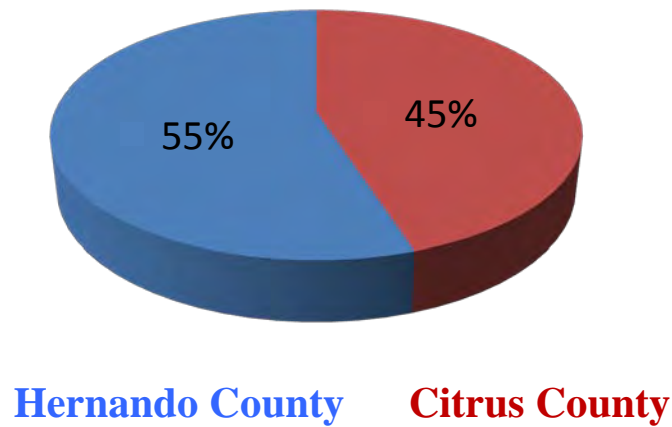


Figure 3 – Metropolitan Planning Area Boundary Population Distribution

4. REAPPORTIONMENT PLAN METHODOLOGY

Chapter 339.175 (3)(a), Florida Statutes states:

“The voting membership of an M.P.O. shall consist of not fewer than 5 or more than 19 apportioned members, the exact number to be determined on an equitable geographic-population ratio basis by the Governor, based on an agreement among the affected units of general-purpose local government as required by federal rules and regulations.”

Using the above as a guideline, *Table 4* shows the individual incorporated municipality populations as a percentage of the entire transportation planning area population. This data is used to develop the MPO membership and is in accordance with the percentage of the population.

Table 4 - Percentage Distribution of MPO Membership

Jurisdiction	Population	
	2010	% of MPO
Hernando (unincorporated)	165,047	52.56%
City of Brooksville	7,719	2.46%
City of Weeki Wachee	12	0.00%
<i>Hernando County Total</i>	<i>172,778</i>	<i>55.02%</i>
Citrus (unincorporated)	130,918	41.69%
City of Crystal River	3,108	0.99%
City of Inverness	7,210	2.30%
<i>Citrus County Total</i>	<i>141,236</i>	<i>44.98%</i>
TOTAL	314,014	100.00%

5. 2013 REAPPORTIONMENT PLAN

The proposed Reapportionment Plan uses a non weighted vote based on population percentage of the governmental entities within the re-designated MPO boundaries. The proposed voting membership is shown in *Table 5*.

Table 5 – MPO Voting Membership

Governmental Entity	Number of Members	Voting Points
Citrus County	2	2
City of Crystal River	1	1
City of Inverness	1	1
Hernando County	4	4
City of Brooksville	1	1
Total	9	9

6. RESOLUTIONS OF SUPPORT

The resolutions of support from the member jurisdictions are provided in the Appendix. Shown in *Table 6* are the dates of approval by each of the affected local governments.

Table 6 - Resolution of Support Approval Dates

Jurisdiction	Date of Approval
Hernando County	1/14/2014
City of Brooksville	1/6/2014
Citrus County	1/14/2014
City of Crystal River	1/13/2014
City of Inverness	1/21/2014

APPENDIX – RESOLUTIONS OF SUPPORT

RESOLUTION 2014- 4

**A RESOLUTION OF THE HERNANDO COUNTY
BOARD OF COUNTY COMMISSIONERS
SUPPORTING THE PLANNING AREA BOUNDARY
REDESIGNATION & REAPPORTIONMENT PLAN OF
THE HERNANDO COUNTY METROPOLITAN
PLANNING ORGANIZATION AND PROVIDING FOR
AN EFFECTIVE DATE**

WHEREAS, subsequent to each decennial census, the Governor of the State of Florida requests each Metropolitan Planning Organization (MPO) to submit a member Apportionment Plan and planning boundary; and

WHEREAS, the Homosassa Springs-Beverly Hills-Citrus Springs Urbanized Area was established in Citrus County by the 2010 Census; and

WHEREAS, the Citrus County Transportation Organization (TPO) and the Hernando County Metropolitan Planning Organization (MPO) seek to establish a unified Metropolitan Planning Area Boundary (MPAB); and

WHEREAS, Federal law requires the redesignation of MPOs to be accomplished by agreement between the Governor and affected local governments; and

WHEREAS, in accordance with Section 339.175(3)(a), Florida Statutes, the MPO voting membership reflected in the Reapportionment Plan must consist of no less than five members with a maximum of nineteen apportioned members, the exact number to be determined on an equitable geographic-population ratio basis; and

WHEREAS, following review and discussion, on December 17, 2013, the Hernando County MPO voted to redesignate and approve the Metropolitan Planning Area Boundary to include the jurisdictional boundary of Citrus County and reapportion the MPO membership to include jurisdictional members from the expanded planning area, and

WHEREAS, the Governor and the Florida Department of Transportation (FDOT) request resolutions supporting the MPO's determination from local governments representing seventy-five percent of the MPO expanded boundary population, which includes Citrus County, Hernando County, and the Cities of Brooksville, Crystal River and Inverness;

NOW, THEREFORE BE IT RESOLVED, by the Hernando County Board of County Commissioners, that:

1. The above recitals are true and correct and by this reference are hereby incorporated into and made an integral part of this resolution.

2. The Hernando County Board of County Commissioners endorses and supports the recommendation by the Hernando County MPO to redesignate its boundaries to include the geographic jurisdictional boundary of Citrus County, and

3. The Hernando County Board of County Commissioners endorses and supports the recommendation by the Hernando County MPO to redesignate the current membership to include the jurisdictional members from the expanded planning area as follows:

Government Entity	Members	Votes
Hernando County	4	4
City of Brooksville	1	1
Citrus County	2	2
City of Crystal River	1	1
City of Inverness	1	1
TOTAL	9	9

4. A copy of this resolution of support shall be sent to the Governor of the State of Florida and the Florida Department of Transportation as part of the Hernando County Metropolitan Planning Organization Planning Area Boundary Redesignation and Reapportionment Plan required by Section 134 of Title 23, U.S.C., and Section 339.175, Florida Statutes.

5. This resolution shall be effective upon adoption.

ADOPTED in regular session this 14th day of JANUARY, 2014.

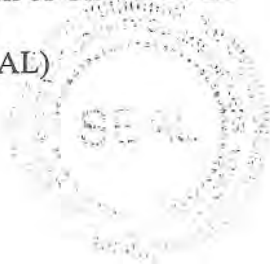

 WAYNE DUKES, Chairman

Attest:

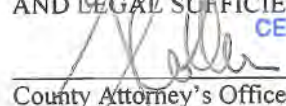


Donald C. Barbee, Jr.
 Clerk of Circuit Court

(SEAL)



APPROVED AS TO FORM
 AND LEGAL SUFFICIENCY


 County Attorney's Office

CERTIFIED TO BE A TRUE COPY
 DON BARBEE, JR.
 CLERK OF COURTS



BY: Sherry L. Cannon D.C.

THIS 22nd DAY OF January 2014

RESOLUTION NO. 2014-01

A RESOLUTION OF THE CITY COUNCIL OF THE CITY OF BROOKSVILLE, FLORIDA, SUPPORTING THE PLANNING AREA BOUNDARY REDESIGNATION & REAPPORTIONMENT PLAN OF THE HERNANDO COUNTY METROPOLITAN PLANNING ORGANIZATION AND PROVIDING FOR AN EFFECTIVE DATE.

WHEREAS, subsequent to each decennial census, the Governor of the State of Florida requests each Metropolitan Planning Organization (MPO) to submit a member Apportionment Plan and planning boundary; and

WHEREAS, the Homosassa Springs-Beverly Hills-Citrus Springs Urbanized Area was established in Citrus County by the 2010 Census; and

WHEREAS, the Citrus County Transportation Planning Organization (TPO) and the Hernando County Metropolitan Planning Organization (MPO) seek to establish a unified Metropolitan Planning Area Boundary (MPAB); and

WHEREAS, Federal law requires the redesignation of MPOs to be accomplished by agreement between the Governor and affected local governments; and

WHEREAS, in accordance with Section 339.175(3)(a), Florida Statutes, the MPO voting membership reflected in the Reapportionment Plan must consist of no less than five members with a maximum of nineteen apportioned members, the exact number to be determined on an equitable geographic-population ratio basis; and

WHEREAS, following review and discussion, on December 17, 2013, the Hernando County MPO voted to redesignate and approve the Metropolitan Planning Area Boundary to include the jurisdictional boundary of Citrus County and reapportion the MPO membership to include jurisdictional members from the expanded planning area, and

WHEREAS, the Governor and the Florida Department of Transportation (FDOT) request resolutions supporting the MPO's determination from local governments representing seventy-five percent of the MPO expanded boundary population, which includes Citrus County, Hernando County, and the Cities of Brooksville, Crystal River and Inverness;

NOW, THEREFORE BE IT RESOLVED, by the City Council of the City of Brooksville, Florida, that:

SECTION 1. The above recitals are true and correct and by this reference are hereby incorporated into and made an integral part of this resolution.

SECTION 2. The City Council of the City of Brooksville, Florida, endorses and supports the recommendation by the Hernando County MPO to redesignate its boundaries to include the geographic jurisdictional boundary of Citrus County, and

SECTION 2. The City Council of the City of Brooksville, Florida, endorses and supports the recommendation by the Hernando County MPO to redesignate its boundaries to include the geographic jurisdictional boundary of Citrus County, and

SECTION 3. The City Council of the City of Brooksville, Florida, endorses and supports the recommendation by the Hernando County MPO to redesignate the current membership to include the jurisdictional members from the expanded planning area as follows:

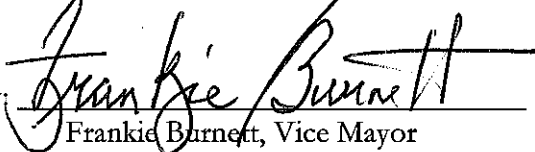
Government Entity	Members	Votes
Hernando County	4	4
City of Brooksville	1	1
Citrus County	2	2
City of Crystal River	1	1
City of Inverness	1	1
TOTAL	9	9

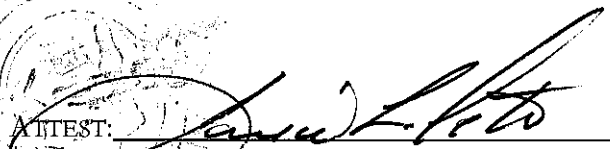
SECTION 4. A copy of this resolution of support shall be sent to the Governor of the State of Florida and the Florida Department of Transportation as part of the Hernando County Metropolitan Planning Organization Planning Area Boundary Redesignation and Reapportionment Plan required by Section 134 of Title 23, U.S.C., and Section 339.175, Florida Statutes.

SECTION 5. This resolution shall be effective upon adoption by the City Council of the City of Brooksville, Florida.

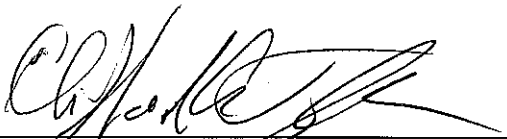
ADOPTED in regular session this 6th day of January, 2014 .

CITY OF BROOKSVILLE

By: 
Frankie Burnett, Vice Mayor

ATTEST: 
Janice L. Peters, CMC
City Clerk

APPROVED AS TO FORM FOR THE RELIANCE OF
THE CITY OF BROOKSVILLE ONLY:


Thomas S. Hogan, Jr., The Hogan Law Firm, LLC
City Attorney

VOTE OF CITY COUNCIL

Bernardini AYE
Bradburn AYE
Burnett AYE
Hohn Absent
Johnston AYE

RESOLUTION 2014- 003



A RESOLUTION OF THE BOARD OF COUNTY COMMISSIONERS, OF CITRUS COUNTY, A POLITICAL SUBDIVISION OF THE STATE OF FLORIDA SUPPORTING THE PLANNING AREA BOUNDARY REDESIGNATION & REAPPORTIONMENT PLAN OF THE HERNANDO COUNTY METROPOLITAN PLANNING ORGANIZATION AND PROVIDING FOR AN EFFECTIVE DATE

CERTIFIED TO BE A TRUE COPY

ANGELA VICK

CLERK OF THE CIRCUIT COURT

BY *Wani White C*
THIS 15th DAY OF Jan 20 14

WHEREAS, subsequent to each decennial census, the Governor of the State of Florida requests each Metropolitan Planning Organization (MPO) to submit a member Apportionment Plan and planning boundary; and

WHEREAS, the Homosassa Springs-Beverly Hills-Citrus Springs Urbanized Area was established in Citrus County by the 2010 Census; and

WHEREAS, the Citrus County Transportation Organization (TPO) and the Hernando County Metropolitan Planning Organization (MPO) seek to establish a unified Metropolitan Planning Area Boundary (MPAB); and

WHEREAS, Federal law requires the redesignation of MPOs to be accomplished by agreement between the Governor and affected local governments; and

WHEREAS, in accordance with Section 339.175(3)(a), Florida Statutes, the MPO voting membership reflected in the Reapportionment Plan must consist of no less than five members with a maximum of nineteen apportioned members, the exact number to be determined on an equitable geographic-population ratio basis; and

WHEREAS, based upon the joint meeting of the Hernando County MPO and the Citrus County TPO held on October 30, 2013, and the meeting of the Hernando County MPO held on November 19, 2013, it is anticipated that the Hernando County MPO, on December 17, 2013, will vote to redesignate and approve the Metropolitan Planning Area Boundary to include the jurisdictional boundary of Citrus County and reapportion the MPO membership to include jurisdictional members from the expanded planning area, and

WHEREAS, the Governor and the Florida Department of Transportation (FDOT) request resolutions supporting the MPO's determination from local governments representing seventy-five percent of the MPO expanded boundary population, which includes Citrus County, Hernando County, and the Cities of Brooksville, Crystal River and Inverness;

NOW, THEREFORE BE IT RESOLVED, by the Board of County Commissioners, of Citrus County, a political subdivision of the State of Florida, that:

1. The above recitals are true and correct and by this reference are hereby incorporated into and made an integral part of this resolution.

2. Citrus County endorses and supports the recommendation by the Hernando County MPO to redesignate its boundaries to include the geographic jurisdictional boundary of Citrus County, and

3. Citrus County endorses and supports the recommendation by the Hernando County MPO to redesignate the current membership to include the jurisdictional members from the expanded planning area as follows:

Government Entity	Members	Votes
Hernando County	4	4
City of Brooksville	1	1
Citrus County	2	2
City of Crystal River	1	1
City of Inverness	1	1
TOTAL	9	9

4. A copy of this resolution of support shall be sent to the Governor of the State of Florida and the Florida Department of Transportation as part of the Hernando County Metropolitan Planning Organization Planning Area Boundary Redesignation and Reapportionment Plan required by Section 134 of Title 23, U.S.C., and Section 339.175, Florida Statutes.

5. This resolution shall be effective upon adoption.

ADOPTED in regular session this 14th day of January, 2014.



Attest:

Tifani L White, DC
Secretary

Signature of Chair

Printed name of Chair

APPROVED AS TO FORM
AND LEGAL SUFFICIENCY FOR CITRUS
COUNTY ONLY

Attorney

RESOLUTION 14-R-01

**A RESOLUTION OF THE CITY OF CRYSTAL RIVER,
FLORIDA, SUPPORTING THE PLANNING AREA
BOUNDARY REDESIGNATION &
REAPPORTIONMENT PLAN OF THE HERNANDO
COUNTY METROPOLITAN PLANNING
ORGANIZATION AND PROVIDING FOR AN
EFFECTIVE DATE**

WHEREAS, subsequent to each decennial census, the Governor of the State of Florida requests each Metropolitan Planning Organization (MPO) to submit a member Apportionment Plan and planning boundary; and

WHEREAS, the Homosassa Springs-Beverly Hills-Citrus Springs Urbanized Area was established in Citrus County by the 2010 Census; and

WHEREAS, the Citrus County Transportation Organization (TPO) and the Hernando County Metropolitan Planning Organization (MPO) seek to establish a unified Metropolitan Planning Area Boundary (MPAB); and

WHEREAS, Federal law requires the redesignation of MPO's to be accomplished by agreement between the Governor and affected local governments; and

WHEREAS, in accordance with Section 339.175(3)(a), Florida Statutes, the MPO voting membership reflected in the Reapportionment Plan must consist of no less than five members with a maximum of nineteen apportioned members, the exact number to be determined on an equitable geographic-population ratio basis; and

WHEREAS, following review and discussion, on December 17, 2013, the Hernando County MPO voted to redesignate and approve the Metropolitan Planning Area Boundary to include the jurisdictional boundary of Citrus County and reapportion the MPO membership to include jurisdictional members from the expanded planning area, and

WHEREAS, the Governor and the Florida Department of Transportation (FDOT) request resolutions supporting the MPO's determination from local governments representing seventy-five percent of the MPO expanded boundary population, which includes Citrus County, Hernando County, and the Cities of Brooksville, Crystal River and Inverness;

NOW, THEREFORE BE IT RESOLVED, by the City of Crystal River, that:

1. The above recitals are true and correct and by this reference are hereby incorporated into and made an integral part of this resolution.

2. The City of Crystal River endorses and supports the recommendation by the Hernando County MPO to redesignate its boundaries to include the geographic jurisdictional boundary of Citrus County, and
3. The City of Crystal River endorses and supports the recommendation by the Hernando County MPO to redesignate the current membership to include the jurisdictional members from the expanded planning area as follows:

Government Entity	Members	Votes
Hernando County	4	4
City of Brooksville	1	1
Citrus County	2	2
City of Crystal River	1	1
City of Inverness	1	1
TOTAL	9	9

4. A copy of this resolution of support shall be sent to the Governor of the State of Florida and the Florida Department of Transportation as part of the Hernando County Metropolitan Planning Organization Planning Area Boundary Redesignation and Reapportionment Plan required by Section 134 of Title 23, U.S.C., and Section 339.175, Florida
5. This resolution shall be effective upon adoption.

PASSED AND ADOPTED by the City Council of the City of Crystal River, Florida this 13th day of January, 2014.

Attest: *Carol Harrington*
Carol Harrington, City Clerk

By: *Jim Farley*
Jim Farley, Mayor

Approved as to form for the reliance
of the City of Crystal River only:

George G. Angeliadis
George G. Angeliadis, City Attorney

VOTE OF COUNCIL

Farley	<u>Y</u>
Gudis	<u>Y</u>
Wheeler	<u>Y</u>
Brown	<u>Y</u>
Holmes	<u>Y</u>

RESOLUTION 2014- 01

A RESOLUTION OF THE CITY COUNCIL OF THE CITY OF INVERNESS, FLORIDA, SUPPORTING THE PLANNING AREA BOUNDARY REDESIGNATION & REAPPORTIONMENT PLAN OF THE HERNANDO COUNTY METROPOLITAN PLANNING ORGANIZATION AND PROVIDING FOR AN EFFECTIVE DATE

WHEREAS, subsequent to each decennial census, the Governor of the State of Florida requests each Metropolitan Planning Organization (MPO) to submit a member Apportionment Plan and planning boundary; and

WHEREAS, the Homosassa Springs-Beverly Hills-Citrus Springs Urbanized Area was established in Citrus County by the 2010 Census; and

WHEREAS, the Citrus County Transportation Organization (TPO) and the Hernando County Metropolitan Planning Organization (MPO) seek to establish a unified Metropolitan Planning Area Boundary (MPAB); and

WHEREAS, Federal law requires the redesignation of MPOs to be accomplished by agreement between the Governor and affected local governments; and

WHEREAS, in accordance with Section 339.175(3)(a), Florida Statutes, the MPO voting membership reflected in the Reapportionment Plan must consist of no less than five members with a maximum of nineteen apportioned members, the exact number to be determined on an equitable geographic-population ratio basis; and

WHEREAS, following review and discussion, on December 17, 2013, the Hernando County MPO voted to redesignate and approve the Metropolitan Planning Area Boundary to include the jurisdictional boundary of Citrus County and reapportion the MPO membership to include jurisdictional members from the expanded planning area, and

WHEREAS, the Governor and the Florida Department of Transportation (FDOT) request resolutions supporting the MPO's determination from local governments representing seventy-five percent of the MPO expanded boundary population, which includes Citrus County, Hernando County, and the Cities of Brooksville, Crystal River and Inverness;

NOW, THEREFORE BE IT RESOLVED, by the Inverness City Council, that:

1. The above recitals are true and correct and by this reference are hereby incorporated into and made an integral part of this resolution.

2. The City of Inverness endorses and supports the recommendation by the Hernando County MPO to redesignate its boundaries to include the geographic jurisdictional boundary of Citrus County, and

3. City of Inverness endorses and supports the recommendation by the Hernando County MPO to redesignate the current membership to include the jurisdictional members from the expanded planning area as follows:

Government Entity	Members	Votes
Hernando County	4	4
City of Brooksville	1	1
Citrus County	2	2
City of Crystal River	1	1
City of Inverness	1	1
TOTAL	9	9

4. A copy of this resolution of support shall be sent to the Governor of the State of Florida and the Florida Department of Transportation as part of the Hernando County Metropolitan Planning Organization Planning Area Boundary Redesignation and Reapportionment Plan required by Section 134 of Title 23, U.S.C., and Section 339.175, Florida Statutes.

5. This resolution shall be effective upon adoption.

ADOPTED in regular session this 21st day of January, 2014.



 Signature of Council President

Linda Bega

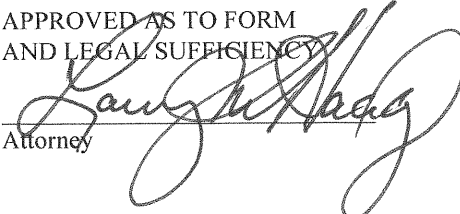
 Printed name of Council President

Attest:




 City Clerk

(SEAL)

APPROVED AS TO FORM
 AND LEGAL SUFFICIENCY


 Attorney

PRESENTATION ON THE PROJECT STATUS OF THE VULNERABILITY AND RISK ASSESSMENT (RESILIENCE STUDY) FOR TRANSPORTATION INFRASTRUCTURE

On November 3, 2022, the MPO Board approved a scope of services for the Vulnerability and Risk Assessment Study to be completed by the General Planning Consultant, Benesch. This is intended to identify hazards from catastrophic weather events such as: storm surge, flooding, and wildfires which may disrupt normal operating conditions or damage facilities for periods of time. As a result, a prioritized list of locations and potential mitigation strategies will be integrated into the 2050 Long-Range Transportation Plan (LRTP).

The consultant has worked with MPO staff to identify a Stakeholder Working Group to guide the development of this study. This Working Group, comprised of local agency staff, emergency management and first responders, and representatives from the MPO's Advisory Committees, has met twice to receive updates from the consultant and to provide direction for conducting the assessment.

The final Stakeholder Working Group has been scheduled for August 23, 2023. Final presentation of the study findings and recommendations will be made to the MPO Board on October 5, 2023.

Staff Recommendation: It is recommended the CAC review the presentation which is being provided for informational purposes only and no action is required.

Staff Recommendation: It is recommended the BPAC review the presentation which is being provided for informational purposes only and no action is required.

Attachment: Vulnerability Study Status PowerPoint presentation

Hernando Citrus MPO Vulnerability and Risk Assessment

MPO Advisory Committees 7/26/2023

MPO Board 8/3/2023



Photo Credit:
Citrus County Chronicle





Outline

- Review of study objectives
- Identification of vulnerable areas
- Identification of critical transportation facilities
- Determining Priorities
- Potential mitigation strategies
- Schedule review and next steps

Review of Study Objectives

- Identify vulnerable transportation infrastructure
- Develop resilient mitigation strategies
- Rank vulnerable locations
- Create a tiered list of vulnerable and critical locations
- Identify potential mitigation strategies for consideration in 2050 Long Range Transportation Plan




Review of Study Objectives

2045 Long Range Transportation Plan Goals

- Consistency with Federal Planning Requirements

Improve safety for all users, including drivers, pedestrians, and bicyclists.

Safety




Proactively support economic development and tourism throughout Hernando and Citrus Counties.

Economy




Provide for the mobility needs of the entire community and visitors alike.

Mobility




Maintain the existing transportation system, including roadway, transit, and active transportation modes.

Intermodal




Preserve, and where possible, enhance social, cultural, physical, and natural environmental values.

Livability



Preserve and maintain a resilient transportation infrastructure and transit assets for the future.

Preservation



Identification of Vulnerable Areas

- Storm Surge / Inundation
 - Data Source: Sea, Lake, and Overland Surges from Hurricanes (SLOSH)
 - Data Provider: National Hurricane Center
 - Data Analysis: Included all 5 hurricane levels
- Flood Hazard
 - Data Source: Digital Flood Insurance Rate Map
 - Data Provider: Federal Emergency Management Agency
 - Data Analysis: Included areas listed as High Risk and Very High Risk
- Fire Hazard
 - Data Source: Wildfire Hazard Probability
 - Data Provider: US Department Agriculture Forest Service
 - Data Analysis: Used two highest categories of High and Very High



**21% of MPO roads
at storm surge risk**



**15% of MPO roads
at flood risk**



**14% of MPO roads
at wildfire risk**

Identification of Vulnerable Areas

Vulnerability Assessment

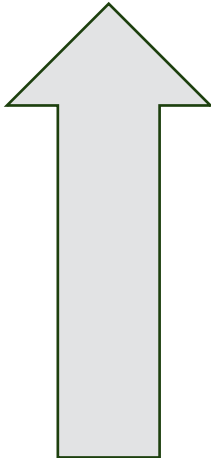
Projected Geographic Impact Areas Based on Event Type & Severity

Location & Length of Roadways Affected Relative to Each Impact Area

Stakeholder Group Feedback

Roadway Segments categorized based on exposure to weather events and likelihood of potential impact.

Vulnerability



High Vulnerability

Moderate Vulnerability

Low Vulnerability

Identification of Critical Transportation Facilities

- **Transportation facilities are critical based on their function and access to critical destinations**

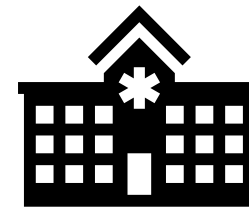
Critical Function

- Evacuation Routes
- Primary Access to Local Area
- Functional Classification
- Traffic Volumes
- Strategic Intermodal System
- Transit Route



Critical Destinations

- Hospitals / EMS Facilities
- Airports
- Emergency Operations Centers
- Schools & Education Facilities
- Government Buildings



Identification of Critical Transportation Facilities

Criticality Assessment

Existing Critical Facility/Asset Locations & Data

Roadway Network Data
(Evacuation Route Status,
Traffic Volumes, etc.)

Stakeholder Group Feedback

Roadway Segments categorized based on exposure to weather events and likelihood of potential impact.

Low Criticality

Moderate Criticality

High Criticality

Criticality

Determining Priorities

High	High Vulnerability Low Criticality	High Vulnerability Moderate Criticality	High Vulnerability High Criticality
Mod.	Moderate Vulnerability Low Criticality	Moderate Vulnerability Moderate Criticality	Moderate Vulnerability High Criticality
Low	Low Vulnerability Low Criticality	Low Vulnerability Moderate Criticality	Low Vulnerability High Criticality
	Low	Mod.	High

Roadway segments are grouped into three priority tiers based on vulnerability and criticality.



Strategy Development

- Mitigation strategy categories
 - Hardening of Infrastructure
 - Policy and Planning Strategies
 - Green and Sustainable Strategies
 - Public Education and Preparedness
 - Technology Enhancements

Strategies grouped by risk factor



Storm Surge

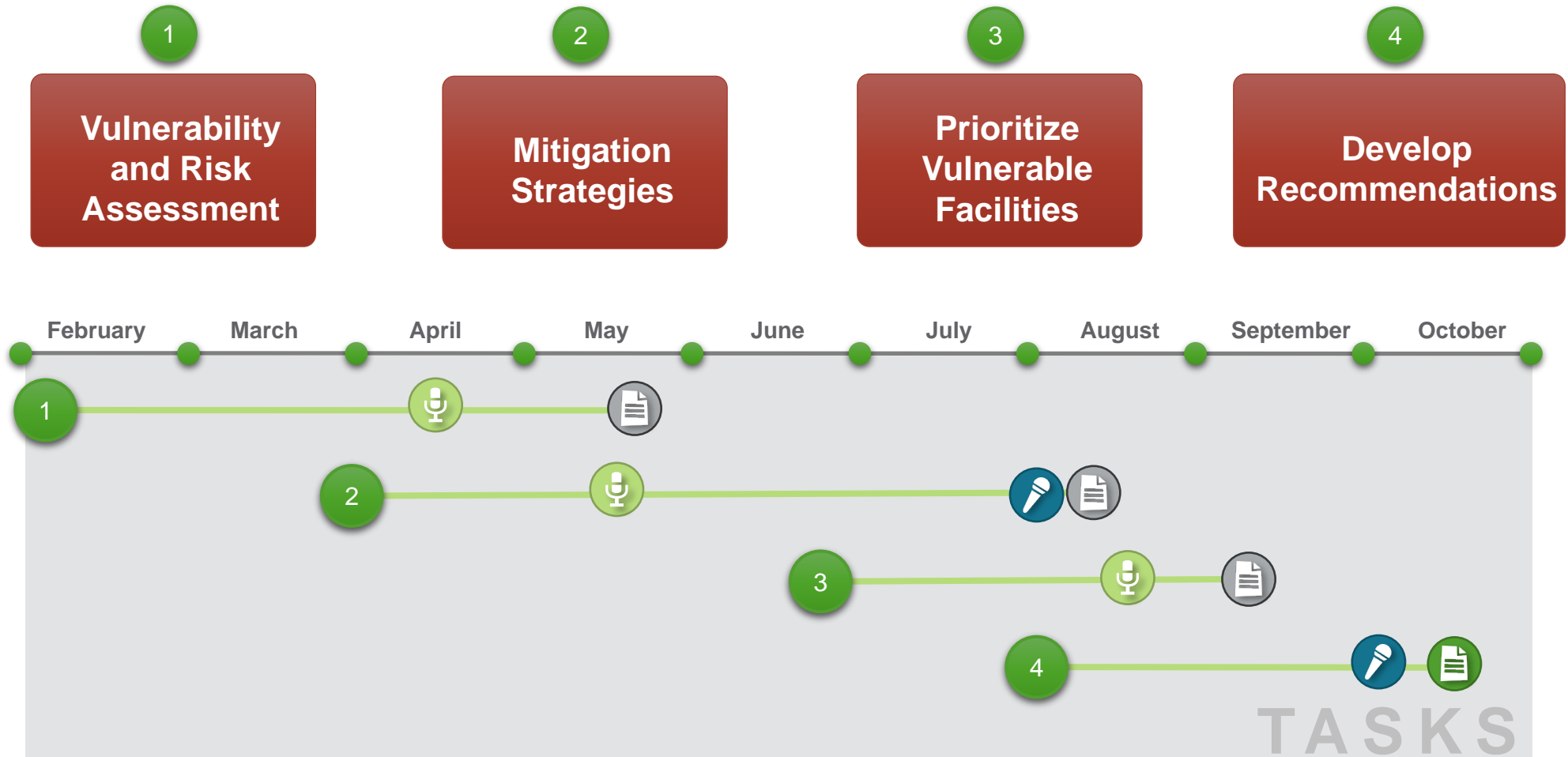


Flooding



Wildfire

Review of Project Schedule



Project Tasks



Stakeholder Group Meeting



Presentation



Draft Deliverable/Report



Final Deliverable/Report

Questions?



Bob Esposito

Executive Director

Hernando Citrus MPO

resposito@co.hernando.fl.us

Direct: 352-540-6523

Wally Blain, AICP

Senior Project Manager

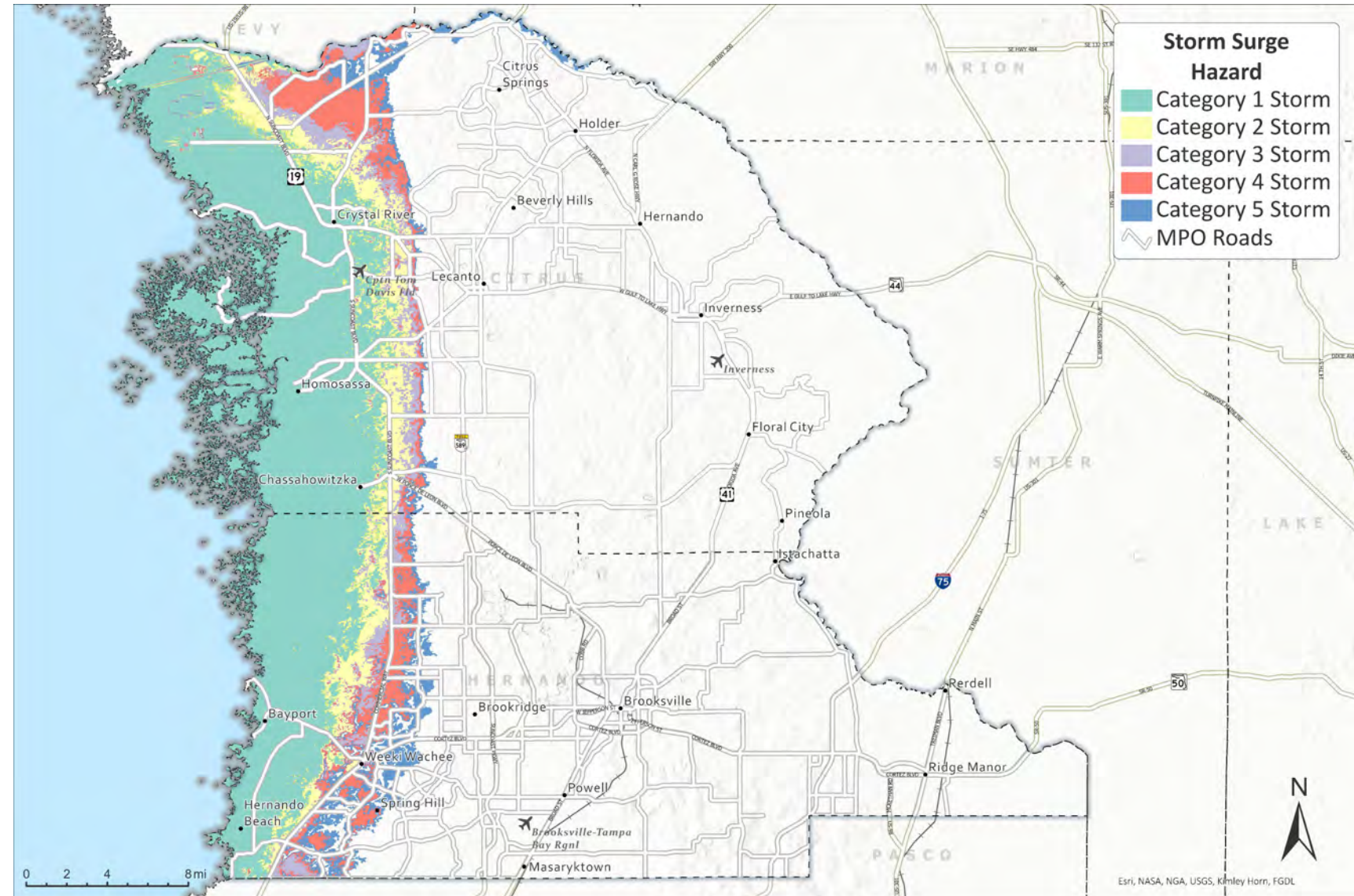
Benesch

wblain@benesch.com

Direct: 615-241-6739

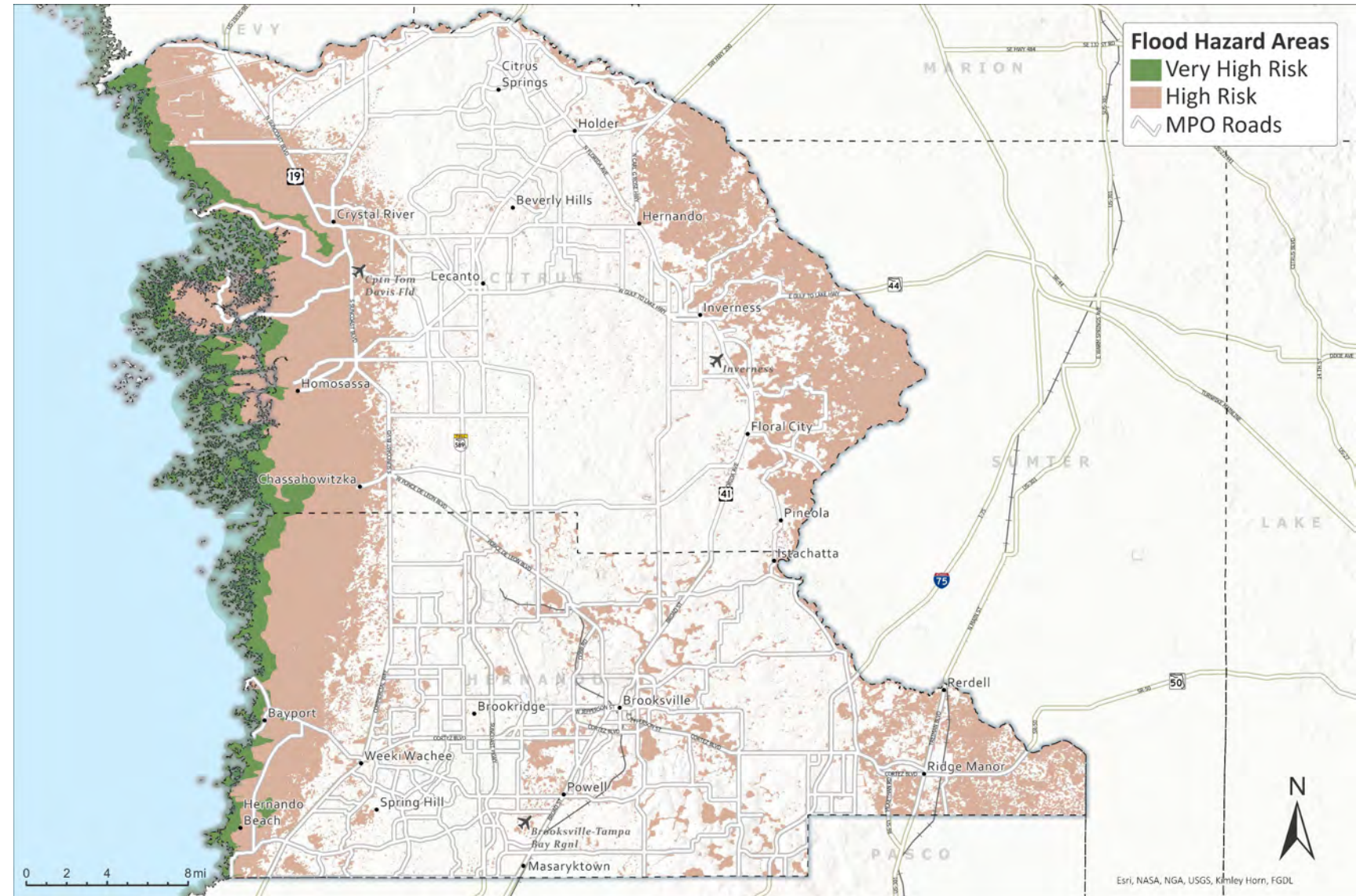
Storm Surge / Inundation

- This dataset is created by computing the maximum storm surge of storms simulated the SLOSH Model (Sea, Lake, and Overland Surges from Hurricanes)
- For planning purposes, the National Hurricane Center uses a representative sample of hypothetical storms to estimate the near worst-case scenario of flooding for each hurricane category.



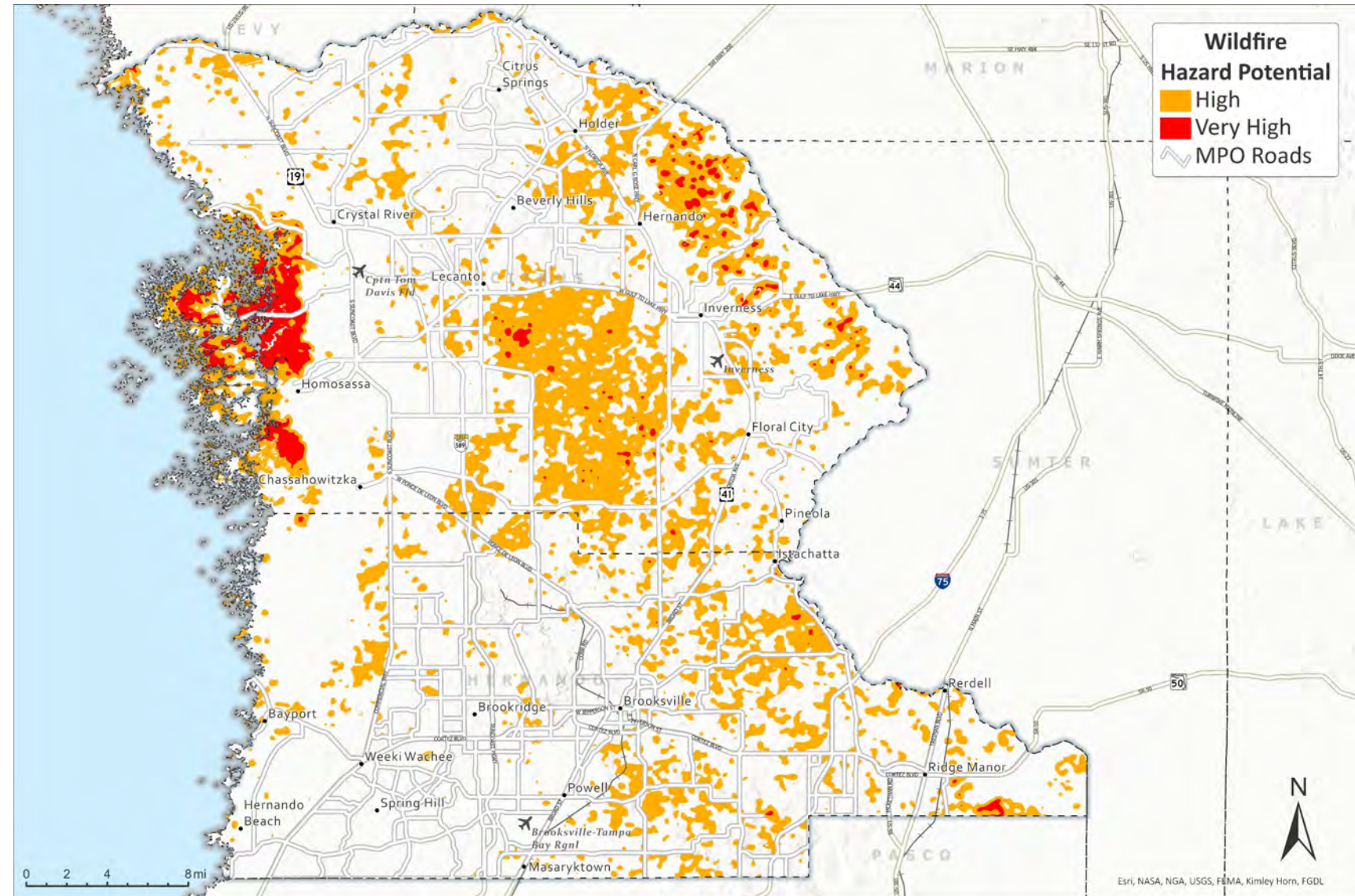
Flood Hazard

- Primarily shows the 100-year flood, or a flood that has a 1% chance of occurring during any given year.
- Based on canal and stream flows, storm tides, hydrologic/hydraulic analyses, and rainfall and topographic surveys.



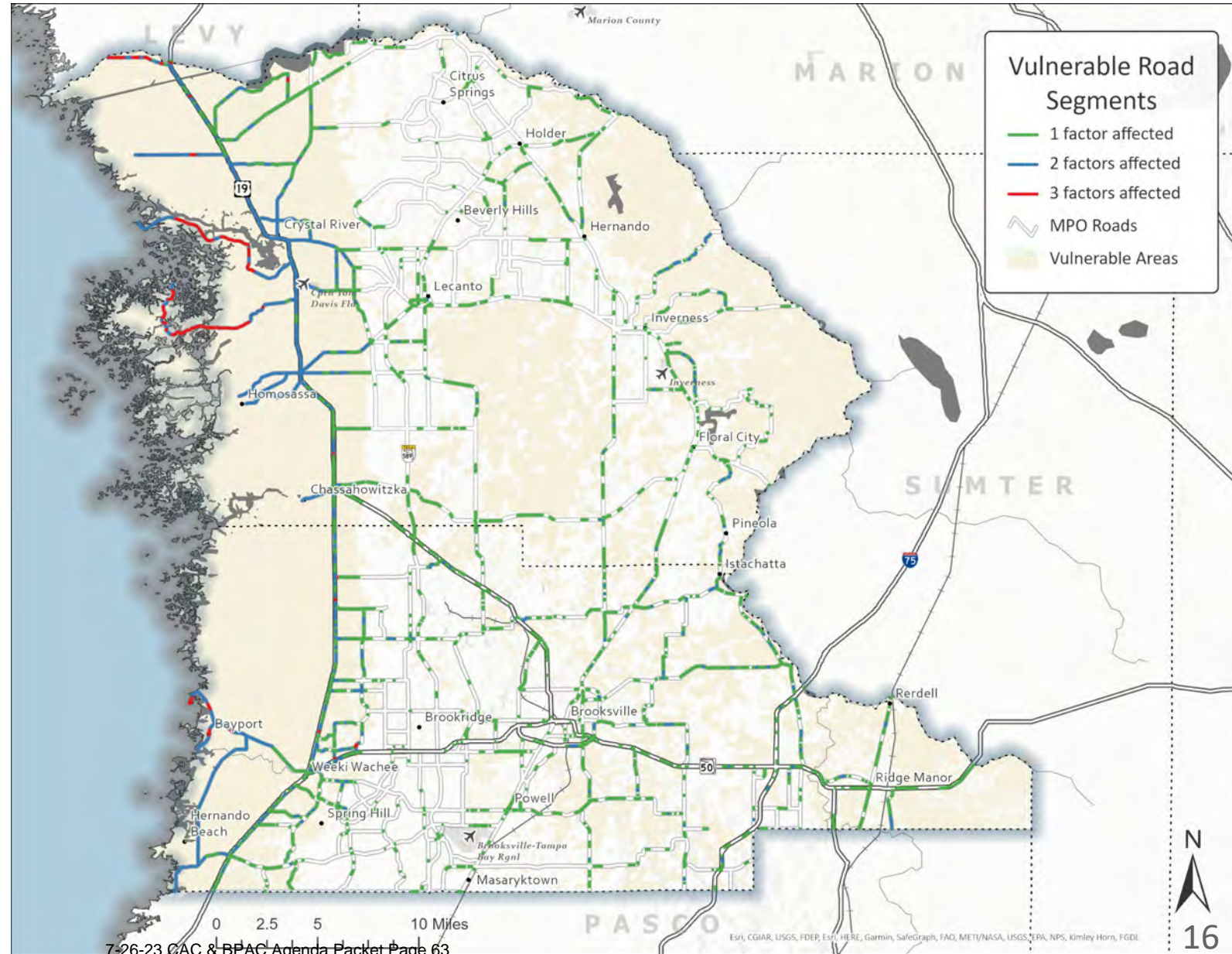
Fire Hazard

- Five classifications (Very Low to Very High)
- Areas with higher values represent higher probability of extreme fire behavior Analysis
- High and Very High values were isolated for the study.



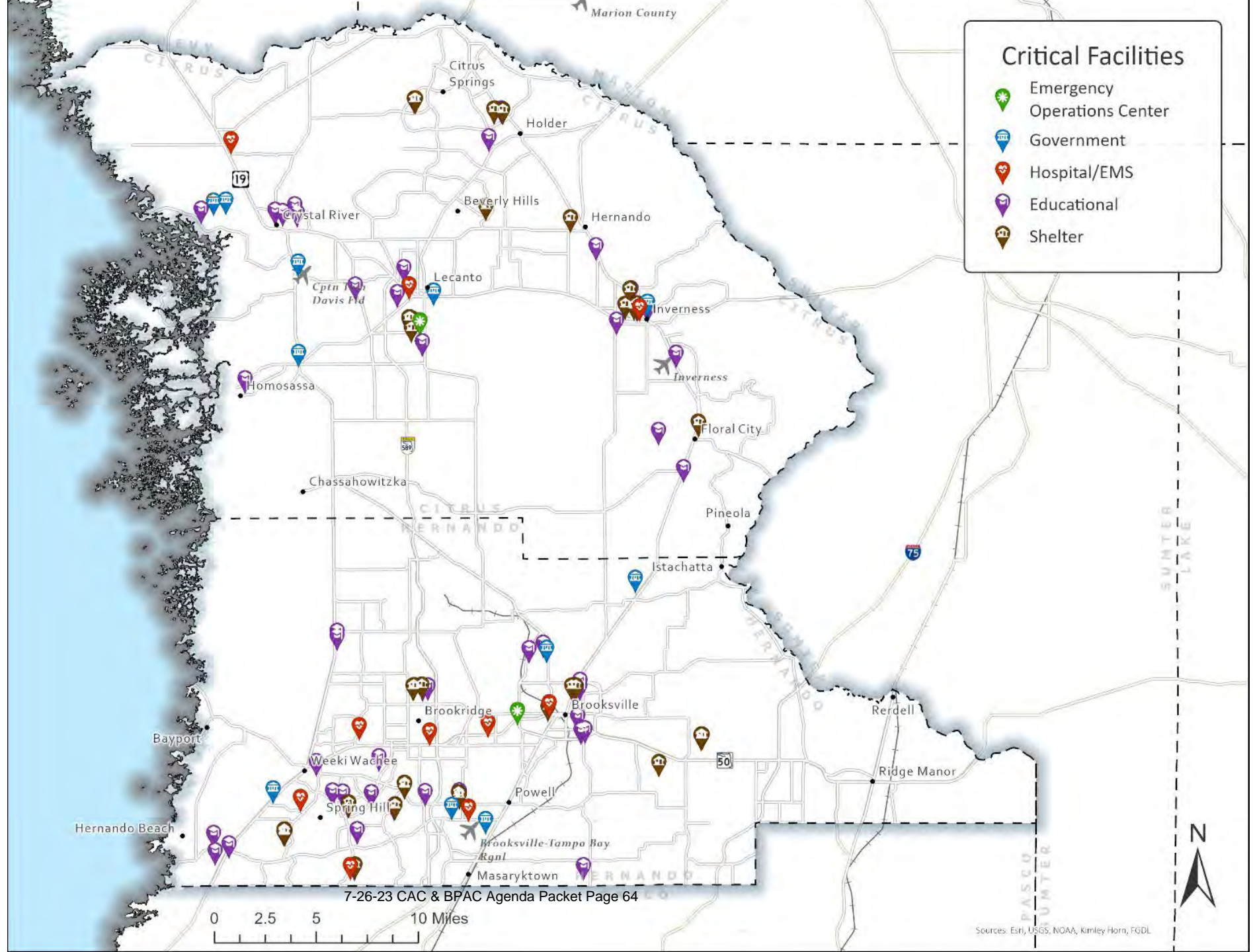
Identification of Vulnerable Areas

- 37% of roadway miles are vulnerable.
 - 26% vulnerable to one factor
 - 10% vulnerable to two factors
 - 1% vulnerable to all three.



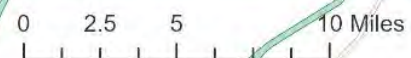
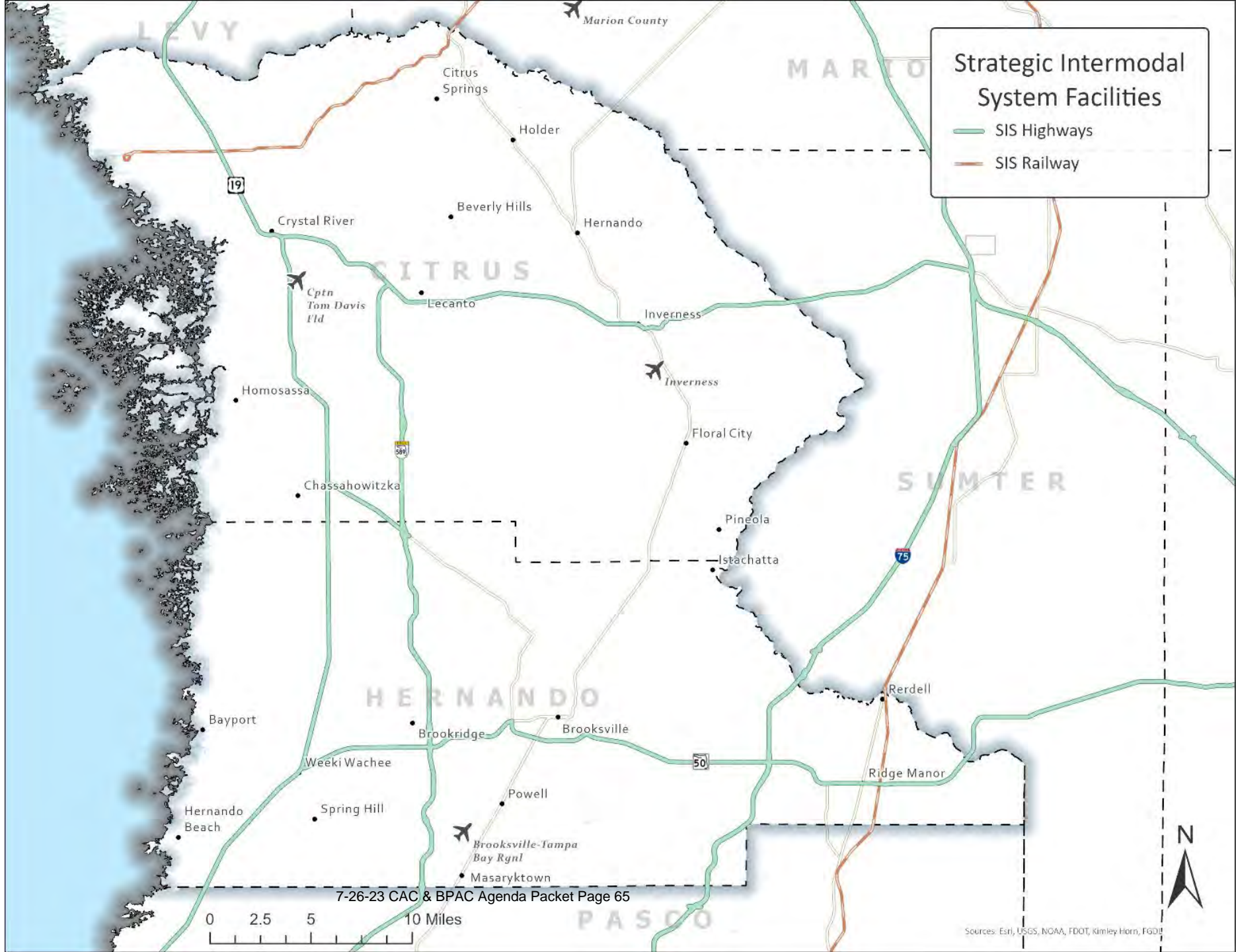
Critical Facilities

- Emergency Operations Center
- Government
- Hospital/EMS
- Educational
- Shelter



Strategic Intermodal System Facilities

- SIS Highways
- SIS Railway



Sources: Esri, USGS, NOAA, FDOT, Kimley-Horn, FDOT

SEGMENT TRAFFIC STUDIES IN CITRUS COUNTY (US 41 AND SR 200) AND HERNANDO COUNTY (COUNTY LINE ROAD AND US 41)

The MPO staff received the traffic count data from Benesch, the General Planning Consultant, tasked with doing the traffic counts in Hernando County and two segments in Citrus County. Upon review of the traffic count data, it was determined that the counties would benefit from doing a more in-depth level of service analysis on US 41 and SR 200 in Citrus County and on County Line Road and US 41 in Hernando County. As the Board may recall, US 41, SR 200, and County Line Road are the MPO's top three project priorities and can serve as evacuation routes in times of emergencies.

The level of service analysis would study the traffic volumes occurring on the roadways and utilize FDOT databases to determine origins and destinations of traffic patterns. This will provide insight into the regional significance of these roadways. The goal of these studies is to support the receipt of additional funding when it becomes available.

Upon the finalization of the new General Planning Consultant contracts, a task order could be assigned at that time. The anticipated cost is approximately \$25,000. Funding is available in the MPO's PL Agreement #G2774 which is reflected in the current adopted FY23 Hernando County Budget and is proposed for funding in the FY24 budget that will be adopted in September 2023.

Staff Recommendation: It is recommended that the CAC recommend the funding of a task order to conduct a level of service analysis on US 41 and SR 200 in Citrus County and on County Line Road and US 41 in Hernando County. Such task order will be issued to one of the MPO's General Planning Consultants upon the final negotiation of consultant contracts expected in late 2023.

Staff Recommendation: It is recommended that the BPAC recommend the funding of a task order to conduct a level of service analysis on US 41 and SR 200 in Citrus County and on County Line Road and US 41 in Hernando County. Such task order will be issued to one of the MPO's General Planning Consultants upon the final negotiation of consultant contracts expected in late 2023.

Attachment: none